



Rabbit Anti-C3Orf34 antibody

SL15175R

Product Name:	C3Orf34
Chinese Name:	3号染色体开放阅读框34抗体
Alias:	Chromosome 3 open reading frame 34; HSD5; LOC84984; MGC14126; CEP19_HUMAN.
Organism Species:	Rabbit
Clonality:	Polyclonal
React Species:	Human,Mouse,Rat,Chicken,Dog,Pig,Cow,Horse,
Applications:	ELISA=1:500-1000IHC-P=1:400-800IHC-F=1:400-800ICC=1:100-500IF=1:100-500 (Paraffin sections need antigen repair) not yet tested in other applications. optimal dilutions/concentrations should be determined by the end user.
Molecular weight:	19kDa
Cellular localization:	cytoplasmic
Form:	Lyophilized or Liquid
Concentration:	1mg/ml
immunogen:	KLH conjugated synthetic peptide derived from human C3Orf34:81-163/163
Lsotype:	IgG
Purification:	affinity purified by Protein A
Storage Buffer:	0.01M TBS(pH7.4) with 1% BSA, 0.03% Proclin300 and 50% Glycerol.
Storage:	Store at -20 °C for one year. Avoid repeated freeze/thaw cycles. The lyophilized antibody is stable at room temperature for at least one month and for greater than a year when kept at -20°C. When reconstituted in sterile pH 7.4 0.01M PBS or diluent of antibody the antibody is stable for at least two weeks at 2-4 °C.
PubMed:	PubMed
Product Detail:	C3orf34 (chromosome 3 open reading frame 34), also known as MGC14126, is a 163 amino acid protein encoded by a gene that maps to human chromosome 3q29. Chromosome 3 is made up of approximately 214 million bases encoding over 1,100 genes. Notably, there is a chemokine receptor gene cluster and a variety of human cancer related loci on chromosome 3. Particular regions of the chromosome 3 short arm are deleted in many types of cancer cells. Key tumor suppressing genes on chromosome 3

encode apoptosis mediator RASSF1, cell migration regulator HYAL1 and angiogenesis suppressor SEMA3B. Marfan Syndrome, porphyria, von Hippel-Lindau syndrome, osteogenesis imperfecta and Charcot-Marie-Tooth disease are a few of the numerous genetic diseases associated with chromosome 3.

Subcellular Location:

Cytoplasm, cytoskeleton, centrosome, centriole. Cytoplasm, cytoskeleton, spindle pole. Note=Associates with the mother centriole in early interphase. Localizes to spindle poles during mitosis, and to distinct foci oriented.

Similarity:

Belongs to the CEP19 family.

SWISS:

Q96LK0

Gene ID:

84984

Database links:

[Entrez Gene: 84984](#)Human

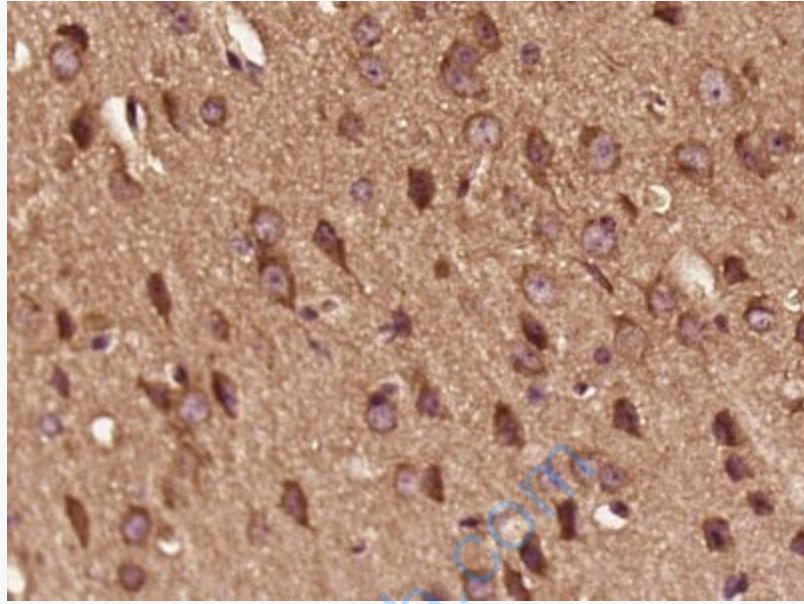
[SwissProt: Q96LK0](#)Human

[SwissProt: Q9CQA8](#)Mouse

[SwissProt: Q9QZX9](#)Rat

Important Note:

This product as supplied is intended for research use only, not for use in human, therapeutic or diagnostic applications.



Picture:

Paraformaldehyde-fixed, paraffin embedded (mouse brain tissue); Antigen retrieval by boiling in sodium citrate buffer (pH6.0) for 15min; Block endogenous peroxidase by 3% hydrogen peroxide for 20 minutes; Blocking buffer (normal goat serum) at 37°C for 30min; Antibody incubation with (C3Orf34) Polyclonal Antibody, Unconjugated (SL15175R) at 1:400 overnight at 4°C, followed by operating according to SP Kit(Rabbit) (sp-0023) instructions and DAB staining.