



Rabbit Anti-C3orf38 antibody

SL15177R

Product Name:	C3orf38
Chinese Name:	3号染色体开放阅读框38抗体
Alias:	Chromosome 3 open reading frame 38; FLJ54270; Hypothetical protein LOC285237; MGC26717; Uncharacterized protein C3orf38; CC038_HUMAN.
Organism Species:	Rabbit
Clonality:	Polyclonal
React Species:	Human,Mouse,Rat,Dog,Sheep,
Applications:	WB=1:500-2000ELISA=1:500-1000IHC-P=1:400-800IHC-F=1:400-800ICC=1:100-500IF=1:100-500 (Paraffin sections need antigen repair) not yet tested in other applications. optimal dilutions/concentrations should be determined by the end user.
Molecular weight:	38kDa
Cellular localization:	The nucleus
Form:	Lyophilized or Liquid
Concentration:	1mg/ml
immunogen:	KLH conjugated synthetic peptide derived from human C3orf38:21-120/329
Lsotype:	IgG
Purification:	affinity purified by Protein A
Storage Buffer:	0.01M TBS(pH7.4) with 1% BSA, 0.03% Proclin300 and 50% Glycerol.
Storage:	Store at -20 °C for one year. Avoid repeated freeze/thaw cycles. The lyophilized antibody is stable at room temperature for at least one month and for greater than a year when kept at -20°C. When reconstituted in sterile pH 7.4 0.01M PBS or diluent of antibody the antibody is stable for at least two weeks at 2-4 °C.
PubMed:	PubMed
Product Detail:	Chromosome 3 is made up of about 214 million bases encoding over 1,100 genes. Notably, there is a chemokine receptor gene cluster and a variety of human cancer related loci on chromosome 3. Particular regions of the chromosome 3 short arm are deleted in many types of cancer cells. Key tumor suppressing genes on chromosome 3 encode apoptosis mediator RASSF1, cell migration regulator HYAL1 and angiogenesis suppressor SEMA3B. Marfan Syndrome, porphyria, von Hippel-Lindau syndrome,

osteogenesis imperfecta and Charcot-Marie-Tooth Disease are a few of the numerous genetic diseases associated with chromosome 3. The C3orf38 gene product has been provisionally designated C3orf38 pending further characterization.

Function:

May be involved in apoptosis regulation.

SWISS:

Q5JPI3

Gene ID:

285237

Database links:

[Entrez Gene: 285237](#)Human

[SwissProt: Q5JPI3](#)Human

[Unigene: 476944](#)Human

[Unigene: 518099](#)Human

[Entrez Gene: 285237](#)Human

[SwissProt: Q5JPI3](#)Human

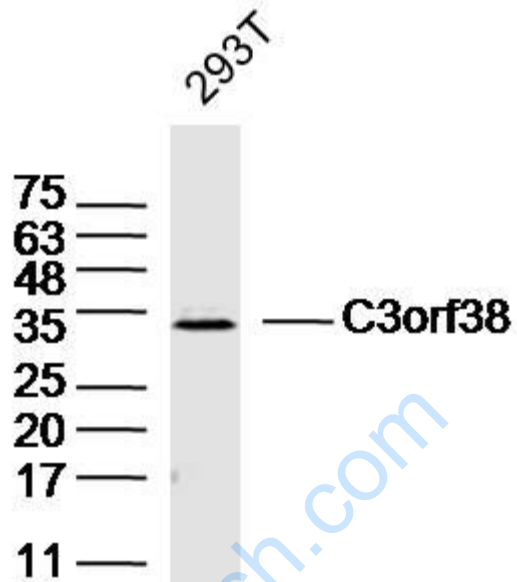
[Unigene: 476944](#)Human

[Unigene: 518099](#)Human

Important Note:

This product as supplied is intended for research use only, not for use in human, therapeutic or diagnostic applications.

Picture:



Sample: 293T(human) Cell Lysate at 40 ug

Primary: Anti-C3orf38(SL15177R) at 1/300 dilution

Secondary: IRDye800CW Goat Anti-Rabbit IgG at 1/20000 dilution

Predicted band size: 38kD

Observed band size: 33kD