



Rabbit Anti-C4 binding protein antibody

SL15184R

Product Name:	C4 binding protein
Chinese Name:	补体4Binding protein
Alias:	C4b binding protein beta chain; C4b-binding protein beta chain; C4BP; C4BPB; C4BPB_HUMAN; Complement component 4 binding protein beta; Complement component 4 binding protein beta chain; Complement component 4-binding protein beta; OTTHUMP00000034288; OTTHUMP00000034289; OTTHUMP00000034375; OTTHUMP0000003474; Proline rich protein; PRP.
Organism Species:	Rabbit
Clonality:	Polyclonal
React Species:	Human,Rat,Dog,
Applications:	WB=1:500-2000ELISA=1:500-1000IHC-P=1:400-800IHC-F=1:400-800ICC=1:100-500IF=1:100-500 (Paraffin sections need antigen repair) not yet tested in other applications. optimal dilutions/concentrations should be determined by the end user.
Molecular weight:	26kDa
Cellular localization:	Secretory protein
Form:	Lyophilized or Liquid
Concentration:	1mg/ml
immunogen:	KLH conjugated synthetic peptide derived from human C4 binding protein :1-100/252
Lsotype:	IgG
Purification:	affinity purified by Protein A
Storage Buffer:	0.01M TBS(pH7.4) with 1% BSA, 0.03% Proclin300 and 50% Glycerol.
Storage:	Store at -20 °C for one year. Avoid repeated freeze/thaw cycles. The lyophilized antibody is stable at room temperature for at least one month and for greater than a year when kept at -20°C. When reconstituted in sterile pH 7.4 0.01M PBS or diluent of antibody the antibody is stable for at least two weeks at 2-4 °C.
PubMed:	PubMed
Product Detail:	C4BPB is a member of a superfamily of proteins composed predominantly of tandemly arrayed short consensus repeats of approximately 60 amino acids. A single, unique beta-chain encoded by this gene assembles with seven identical alpha-chains into the

predominant isoform of C4b-binding protein, a multimeric protein that controls activation of the complement cascade through the classical pathway. C4b-binding protein has a regulatory role in the coagulation system also, mediated through the beta-chain binding of protein S, a vitamin K-dependent protein that serves as a cofactor of activated protein C. The genes encoding both alpha and beta chains are located adjacent to each other on human chromosome 1 in the regulator of complement activation gene cluster. Alternative splicing gives rise to multiple transcript variants

Function:

Controls the classical pathway of complement activation. It binds as a cofactor to C3b/C4b inactivator (C3bINA), which then hydrolyzes the complement fragment C4b. It also accelerates the degradation of the C4bC2a complex (C3 convertase) by dissociating the complement fragment C2a. It also interacts with anticoagulant protein S and with serum amyloid P component. The beta chain binds protein S.

Subunit:

Disulfide-linked complex of alpha and beta chains of 3 possible sorts: a 570 kDa complex of 7 alpha chains and 1 beta chain, a 530 kDa homoheptamer of alpha chains or a 500 kDa complex of 6 alpha chains and 1 beta chain. The central body of the alpha chain homopolymer supports tentacles, each with the binding site for C4b at the end.

Subcellular Location:

Secreted.

Similarity:

Contains 3 Sushi (CCP/SCR) domains.

SWISS:

P20851

Gene ID:

725

Database links:

[Entrez Gene: 725](#)Human

[Entrez Gene: 24236](#)Rat

[Omim: 120831](#)Human

[SwissProt: P20851](#)Human

[SwissProt: Q63515](#)Rat

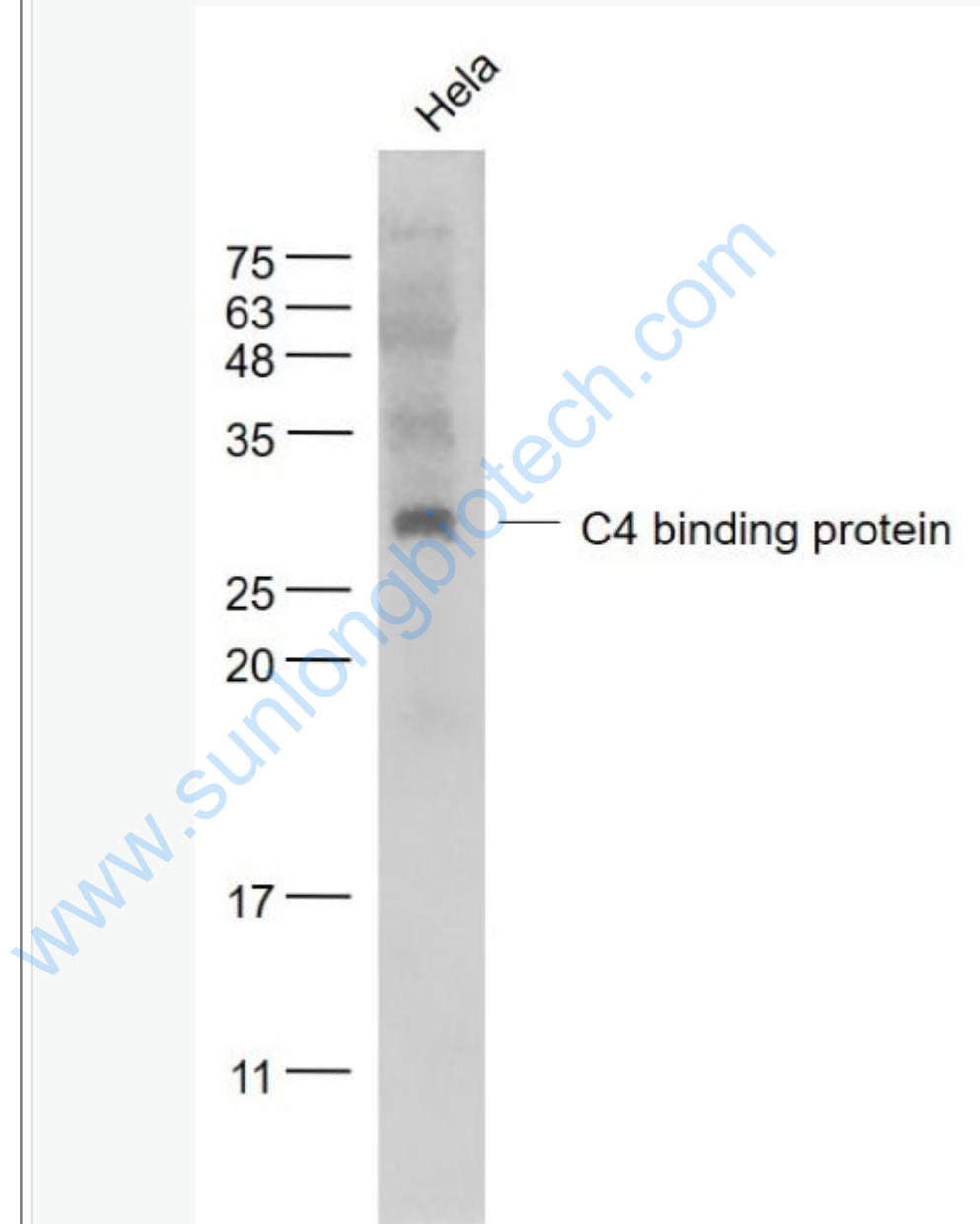
[Unigene: 99886](#)Human

[Unigene: 11151](#)Rat

Important Note:

This product as supplied is intended for research use only, not for use in human, therapeutic or diagnostic applications.

Picture:



Sample:

HeLa(Human) Cell Lysate at 30 ug

Primary: Anti- C4 binding protein (SL15184R) at 1/1000 dilution

Secondary: IRDye800CW Goat Anti-Rabbit IgG at 1/20000 dilution

Predicted band size: 26 kD

Observed band size: 26 kD

www.sunlongbiotech.com