



Rabbit Anti-C4BPA antibody

SL15185R

Product Name:	C4BPA
Chinese Name:	补体C4BPA蛋白抗体
Alias:	C4b-binding protein alpha chain; C4bp; C4bpa; C4BPA_HUMAN; Complement component 4 binding protein; Proline-rich protein; PrP; RP11-164O23.4.
Organism Species:	Rabbit
Clonality:	Polyclonal
React Species:	Human,Rat,
Applications:	WB=1:500-2000ELISA=1:500-1000IHC-P=1:400-800IHC-F=1:400-800ICC=1:100-500IF=1:100-500 (Paraffin sections need antigen repair) not yet tested in other applications. optimal dilutions/concentrations should be determined by the end user.
Molecular weight:	62kDa
Cellular localization:	Secretory protein
Form:	Lyophilized or Liquid
Concentration:	1mg/ml
immunogen:	KLH conjugated synthetic peptide derived from human C4a :201-300/597
Lsotype:	IgG
Purification:	affinity purified by Protein A
Storage Buffer:	0.01M TBS(pH7.4) with 1% BSA, 0.03% Proclin300 and 50% Glycerol.
Storage:	Store at -20 °C for one year. Avoid repeated freeze/thaw cycles. The lyophilized antibody is stable at room temperature for at least one month and for greater than a year when kept at -20°C. When reconstituted in sterile pH 7.4 0.01M PBS or diluent of antibody the antibody is stable for at least two weeks at 2-4 °C.
PubMed:	PubMed
Product Detail:	C4BPA is a member of a superfamily of proteins composed predominantly of tandemly arrayed short consensus repeats of approximately 60 amino acids. Along with a single, unique beta-chain, seven identical alpha-chains encoded by this gene assemble into the predominant isoform of C4b-binding protein, a multimeric protein that controls activation of the complement cascade through the classical pathway. The genes encoding both alpha and beta chains are located adjacent to each other on human chromosome 1 in

the regulator of complement activation gene cluster. Two pseudogenes of this gene are also found in the cluster.

Function:

Controls the classical pathway of complement activation. It binds as a cofactor to C3b/C4b inactivator (C3bINA), which then hydrolyzes the complement fragment C4b. It also accelerates the degradation of the C4bC2a complex (C3 convertase) by dissociating the complement fragment C2a. Alpha chain binds C4b. It interacts also with anticoagulant protein S and with serum amyloid P component.

Subunit:

Disulfide-linked complex of alpha and beta chains of 3 possible sorts: a 570 kDa complex of 7 alpha chains and 1 beta chain, a 530 kDa homoheptamer of alpha chains or a 500 kDa complex of 6 alpha chains and 1 beta chain. The central body of the alpha chain homopolymer supports tentacles, each with the binding site for C4b at the end.

Subcellular Location:

Secreted.

Tissue Specificity:

Chylomicrons in the plasma.

Similarity:

Contains 8 Sushi (CCP/SCR) domains.

SWISS:

P04003

Gene ID:

722

Database links:

[Entrez Gene: 722](#)Human

[Entrez Gene: 12269](#)Mouse

[Oimim: 120830](#)Human

[SwissProt: P04003](#)Human

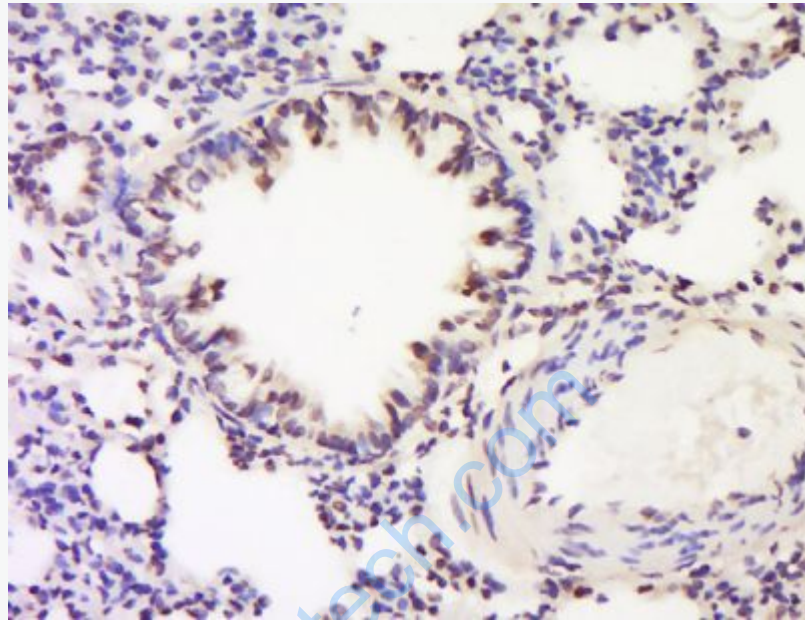
[SwissProt: P08607](#)Mouse

[Unigene: 1012](#)Human

Important Note:

This product as supplied is intended for research use only, not for use in human,

therapeutic or diagnostic applications.



Picture:

Tissue/cell: Rat lung tissue; 4% Paraformaldehyde-fixed and paraffin-embedded;
Antigen retrieval: citrate buffer (0.01M, pH 6.0), Boiling bathing for 15min; Block endogenous peroxidase by 3% Hydrogen peroxide for 30min; Blocking buffer (normal goat serum,C-0005) at 37°C for 20 min;
Incubation: Anti-C4PBA Polyclonal Antibody, Unconjugated(SL15185R) 1:200, overnight at 4°C, followed by conjugation to the secondary antibody(SP-0023) and DAB(C-0010) staining