



Rabbit Anti-C4orf29 antibody

SL15190R

Product Name:	C4orf29
Chinese Name:	4号染色体开放阅读框29抗体
Alias:	C4orf29; CD029_HUMAN; Chromosome 4 open reading frame 29; Uncharacterized protein C4orf29.
Organism Species:	Rabbit
Clonality:	Polyclonal
React Species:	Human,Mouse,Rat,Horse,Rabbit,
Applications:	WB=1:500-2000ELISA=1:500-1000IHC-P=1:400-800IHC-F=1:400-800ICC=1:100-500IF=1:100-500 (Paraffin sections need antigen repair) not yet tested in other applications. optimal dilutions/concentrations should be determined by the end user.
Molecular weight:	44kDa
Cellular localization:	Secretory protein
Form:	Lyophilized or Liquid
Concentration:	1mg/ml
immunogen:	KLH conjugated synthetic peptide derived from human C4orf29 :121-220/414
Lsotype:	IgG
Purification:	affinity purified by Protein A
Storage Buffer:	0.01M TBS(pH7.4) with 1% BSA, 0.03% Proclin300 and 50% Glycerol.
Storage:	Store at -20 °C for one year. Avoid repeated freeze/thaw cycles. The lyophilized antibody is stable at room temperature for at least one month and for greater than a year when kept at -20°C. When reconstituted in sterile pH 7.4 0.01M PBS or diluent of antibody the antibody is stable for at least two weeks at 2-4 °C.
PubMed:	PubMed
Product Detail:	C4orf29 (chromosome 4 open reading frame 29) is a 414 amino acid secreted protein that exists as four alternatively spliced isoforms and is encoded by a gene that maps to human chromosome 4. Human chromosome 4 represents approximately 6% of the human genome and contains nearly 900 genes. Notably, the Huntingtin gene, which is found to encode an expanded glutamine tract in cases of Huntington's disease, is located on chromosome 4. FGFR-3 is also encoded by a gene that maps to human chromosome

4 and has been associated with thanatophoric dwarfism, achondroplasia, Muenke syndrome and bladder cancer. Chromosome 4 is also tied to Ellis-van Creveld syndrome, methylmalonic acidemia and polycystic kidney disease.

Subcellular Location:

Secreted (Potential).

SWISS:

Q0P651

Gene ID:

80167

Database links:

[Entrez Gene: 80167](#)Human

[Entrez Gene: 269423](#)Mouse

[Entrez Gene: 499602](#)Rat

[SwissProt: Q0P651](#)Human

[SwissProt: Q8C1A9](#)Mouse

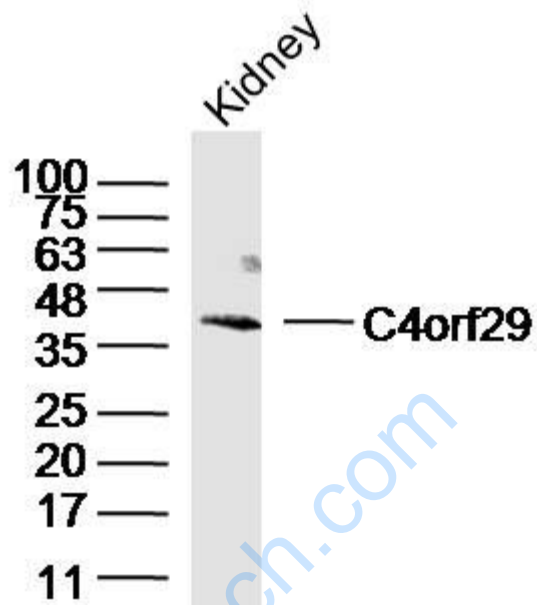
[SwissProt: Q4V7A8](#)Rat

[Unigene: 445817](#)Human

Important Note:

This product as supplied is intended for research use only, not for use in human, therapeutic or diagnostic applications.

Picture:



Sample: Kidney (Mouse) Lysate at 40 ug

Primary: Anti-C4orf29 (bbs-15190R) at 1/300 dilution

Secondary: IRDye800CW Goat Anti-Rabbit IgG at 1/20000 dilution

Predicted band size: 44kD

Observed band size: 44kD