



## Rabbit Anti-C6orf15 antibody

SL15224R

|                               |  |
|-------------------------------|--|
| <b>Product Name:</b>          | C6orf15  |
| <b>Chinese Name:</b>          | 6号染色体开放阅读框15抗体   |
| <b>Alias:</b>                 | C6orf15; CF015_HUMAN; Protein STG; STG; Uncharacterized protein C6orf15; UNQ1840/PRO3566.  |
| <b>Organism Species:</b>      | Rabbit   |
| <b>Clonality:</b>             | Polyclonal   |
| <b>React Species:</b>         | Human,   |
| <b>Applications:</b>          | WB=1:500-2000ELISA=1:500-1000IHC-P=1:400-800IHC-F=1:400-800ICC=1:100-500IF=1:100-500 (Paraffin sections need antigen repair)<br>not yet tested in other applications.<br>optimal dilutions/concentrations should be determined by the end user.  |
| <b>Molecular weight:</b>      | 32kDa  |
| <b>Cellular localization:</b> | cytoplasmic  |
| <b>Form:</b>                  | Lyophilized or Liquid  |
| <b>Concentration:</b>         | 1mg/ml   |
| <b>immunogen:</b>             | KLH conjugated synthetic peptide derived from human C6orf15:21-120/325   |
| <b>Lsotype:</b>               | IgG  |
| <b>Purification:</b>          | affinity purified by Protein A   |
| <b>Storage Buffer:</b>        | 0.01M TBS(pH7.4) with 1% BSA, 0.03% Proclin300 and 50% Glycerol.   |
| <b>Storage:</b>               | Store at -20 °C for one year. Avoid repeated freeze/thaw cycles. The lyophilized antibody is stable at room temperature for at least one month and for greater than a year when kept at -20°C. When reconstituted in sterile pH 7.4 0.01M PBS or diluent of antibody the antibody is stable for at least two weeks at 2-4 °C.  |
| <b>PubMed:</b>                | <a href="#">PubMed</a>   |
| <b>Product Detail:</b>        | C6orf15 is a 325 amino acid protein that binds numerous extracellular matrix proteins and is expressed in taste buds, skin and tonsils. STG is a secreted protein that contains an N-terminal signal peptide, potential O-glycosylation sites and multiple tandem repeats. STG localizes to the extracellular matrix and likely plays a role in taste cell physiology. STG is encoded by a gene that maps to human chromosome 6p21.33, a region associated with lung cancer and follicular lymphoma susceptibility |

**Subunit:**

Binds to numerous extracellular matrix proteins (By similarity).

**Subcellular Location:**

Secreted, extracellular space, extracellular matrix (By similarity).

**Tissue Specificity:**

Expressed in skin and tonsils.

**SWISS:**

Q6UXA7

**Gene ID:**

29113

**Database links:**

[Entrez Gene: 29113](#)Human

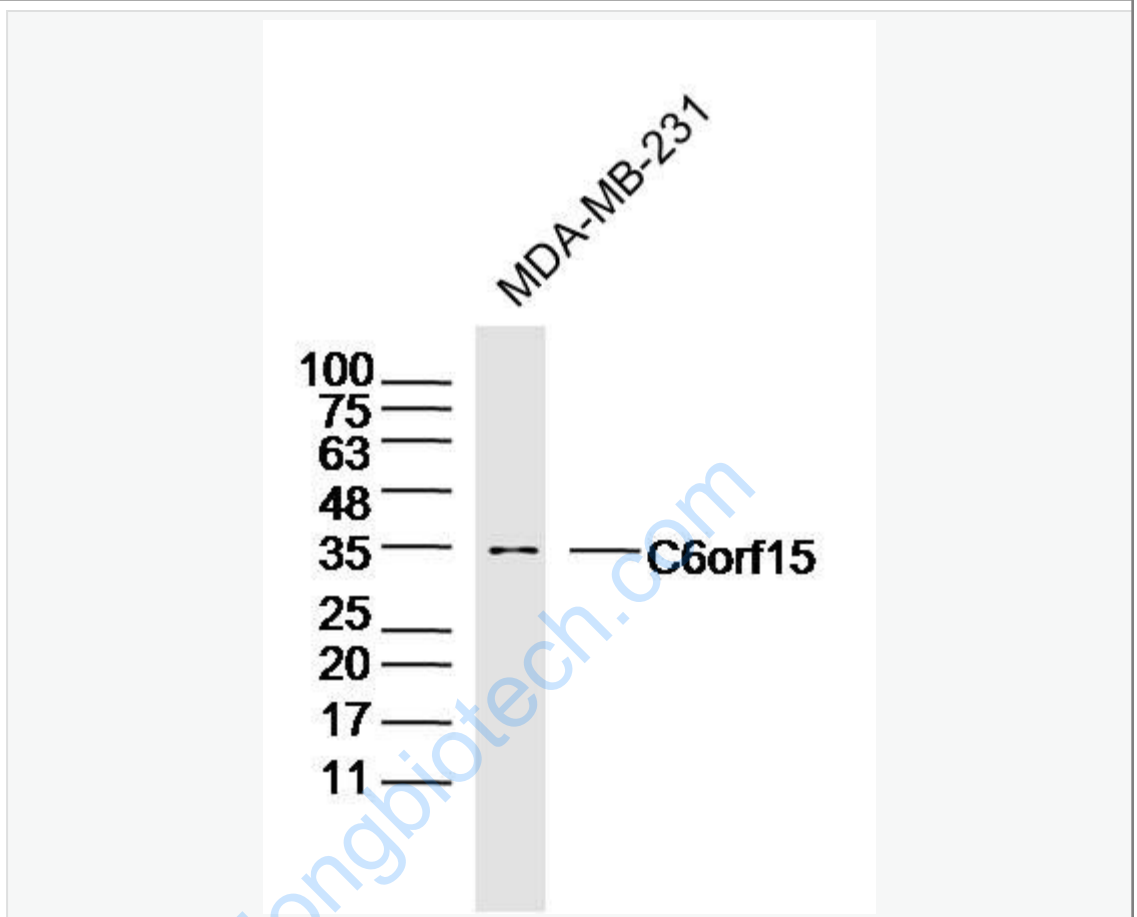
[SwissProt: Q6UXA7](#)Human

[Unigene: 272214](#)Human

**Important Note:**

This product as supplied is intended for research use only, not for use in human, therapeutic or diagnostic applications.

Picture:



Sample: MDA-MB-231 Cell (Human) Lysate at 30 ug

Primary: Anti-C6orf15 (SL15224R) at 1/300 dilution

Secondary: IRDye800CW Goat Anti-Rabbit IgG at 1/20000 dilution

Predicted band size: 32kD

Observed band size: 34kD