



Rabbit Anti-FSH beta antibody

SL1536R

Product Name:	FSH beta
Chinese Name:	促卵泡刺激素抗体
Alias:	Follicle Stimulating Hormone; Follicle stimulating hormone beta polypeptide; Follicle stimulating hormone beta subunit; Follitropin beta chain; Follitropin beta chain precursor; Follitropin subunit beta; FSH B; FSH-B; FSH-beta; FSHB; FSHbeta.
Organism Species:	Rabbit
Clonality:	Polyclonal
React Species:	Human,Pig,Cow,Horse,Rabbit,Sheep,Guinea Pig,
Applications:	WB=1:500-2000ELISA=1:500-1000IHC-P=1:400-800IHC-F=1:400-800IF=1:100-500 (Paraffin sections need antigen repair) not yet tested in other applications. optimal dilutions/concentrations should be determined by the end user.
Molecular weight:	12kDa
Cellular localization:	Secretory protein
Form:	Lyophilized or Liquid
Concentration:	1mg/ml
immunogen:	KLH conjugated synthetic peptide derived from human FSHB:61-98/129
Lsotype:	IgG
Purification:	affinity purified by Protein A
Storage Buffer:	0.01M TBS(pH7.4) with 1% BSA, 0.03% Proclin300 and 50% Glycerol.
Storage:	Store at -20 °C for one year. Avoid repeated freeze/thaw cycles. The lyophilized antibody is stable at room temperature for at least one month and for greater than a year when kept at -20°C. When reconstituted in sterile pH 7.4 0.01M PBS or diluent of antibody the antibody is stable for at least two weeks at 2-4 °C.
PubMed:	PubMed
Product Detail:	The pituitary glycoprotein hormone family includes follicle-stimulating hormone, luteinizing hormone, chorionic gonadotropin, and thyroid-stimulating hormone. All of these glycoproteins consist of an identical alpha subunit and a hormone-specific beta subunit. This gene encodes the beta subunit of follicle-stimulating hormone. In conjunction with luteinizing hormone, follicle-stimulating hormone induces egg and

sperm production. Alternative splicing results in two transcript variants encoding the same protein. [provided by RefSeq, Jul 2008]

Function:

Stimulates development of follicle and spermatogenesis in the reproductive organs.

Subunit:

Heterodimer of a common alpha chain and a unique beta chain which confers biological specificity to thyrotropin, lutropin, follitropin and gonadotropin.

Subcellular Location:

Secreted.

DISEASE:

Defects in FSHB are a cause of isolated follicle-stimulating hormone deficiency (IFSHD) [MIM:229070]. Selective follicle-stimulating hormone deficiency is an uncommon cause of infertility, producing amenorrhea and hypogonadism in women and oligo or azoospermia with normal testosterone levels in normally virilised men.

Similarity:

Belongs to the glycoprotein hormones subunit beta family.

SWISS:

P01225

Gene ID:

2488

Database links:

[Entrez Gene: 2488](#)Human

[Entrez Gene: 100008946](#)Rabbit

[Ommim: 136530](#)Human

[SwissProt: P01225](#)Human

[SwissProt: Q6IY73](#)Rabbit

[Unigene: 36975](#)Human

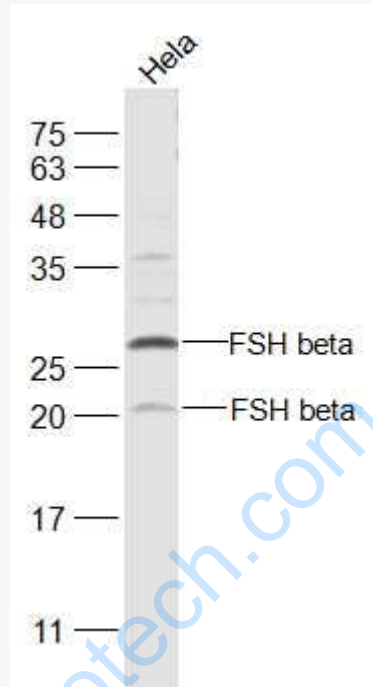
Important Note:

This product as supplied is intended for research use only, not for use in human, therapeutic or diagnostic applications.

促卵泡激素与黄体生成素统称促性腺激素具有促进卵泡发育成熟作用, 与黄体生

成素一起促进雌激素分泌.

Picture:



Sample:

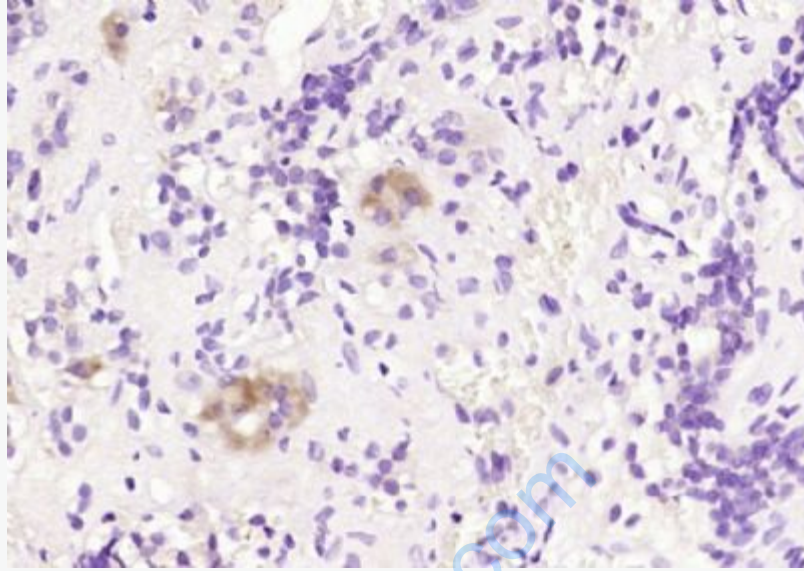
HeLa(Human) Cell Lysate at 30 ug

Primary: Anti-FSH beta (SL1536R) at 1/500 dilution

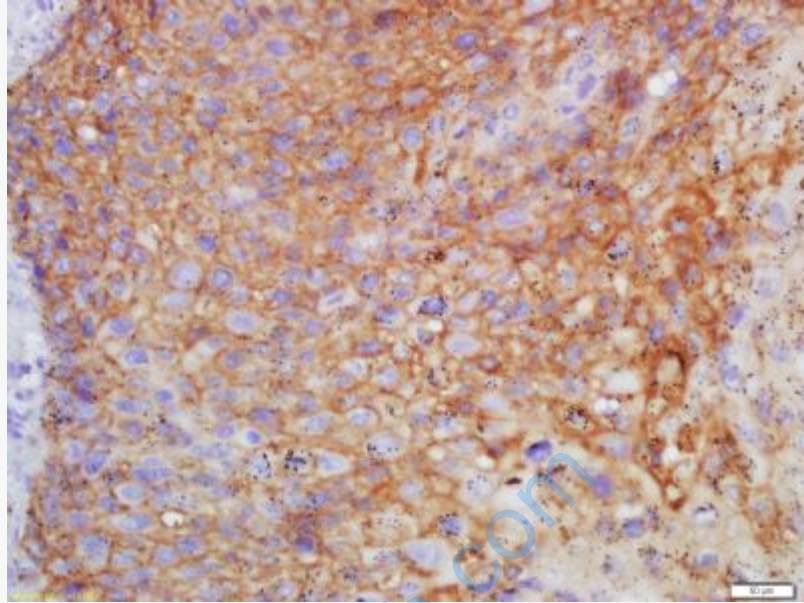
Secondary: IRDye800CW Goat Anti-Rabbit IgG at 1/20000 dilution

Predicted band size: 12 kD

Observed band size: 22/27 kD



Paraformaldehyde-fixed, paraffin embedded (Human pituitary adenoma); Antigen retrieval by boiling in sodium citrate buffer (pH6.0) for 15min; Block endogenous peroxidase by 3% hydrogen peroxide for 20 minutes; Blocking buffer (normal goat serum) at 37°C for 30min; Antibody incubation with (FSH beta) Polyclonal Antibody, Unconjugated (SL1536R) at 1:200 overnight at 4°C, followed by operating according to SP Kit(Rabbit) (sp-0023) instructions and DAB staining.



Tissue/cell: Human endometrium tissue; 4% Paraformaldehyde-fixed and paraffin-embedded;

Antigen retrieval: citrate buffer (0.01M, pH 6.0), Boiling bathing for 15min; Block endogenous peroxidase by 3% Hydrogen peroxide for 30min; Blocking buffer (normal goat serum,C-0005) at 37°C for 20 min;

Incubation: Anti-FSHB Polyclonal Antibody, Unconjugated(SL1536R) 1:200, overnight at 4°C, followed by conjugation to the secondary antibody(SP-0023) and DAB(C-0010) staining