



Rabbit Anti-GPR113 antibody

SL15375R

Product Name:	GPR113
Chinese Name:	G protein-coupled receptorGPR113蛋白抗体
Alias:	FLJ16767; G-protein coupled receptor PGR23; GP113; GPR113; hGPCR37; PGR23; Probable G-protein coupled receptor 113; UNQ9196/PRO34000; GP113 HUMAN.
Organism Species:	Rabbit
Clonality:	Polyclonal
React Species:	Human,
Applications:	WB=1:500-2000ELISA=1:500-1000IHC-P=1:400-800IHC-F=1:400-800ICC=1:100-500IF=1:100-500 (Paraffin sections need antigen repair) not yet tested in other applications. optimal dilutions/concentrations should be determined by the end user.
Molecular weight:	114kDa
Cellular localization:	The cell membrane
Form:	Lyophilized or Liquid
Concentration:	1mg/ml
immunogen:	KLH conjugated synthetic peptide derived from human GPR113:1-100/1079<Extracellular>
Lsotype:	IgG
Purification:	affinity purified by Protein A
Storage Buffer:	0.01M TBS(pH7.4) with 1% BSA, 0.03% Proclin300 and 50% Glycerol.
Storage:	Store at -20 °C for one year. Avoid repeated freeze/thaw cycles. The lyophilized antibody is stable at room temperature for at least one month and for greater than a year when kept at -20°C. When reconstituted in sterile pH 7.4 0.01M PBS or diluent of antibody the antibody is stable for at least two weeks at 2-4 °C.
PubMed:	PubMed
Product Detail:	GPR113 (G protein-coupled receptor 113), also known as PGR23 (G-protein coupled receptor PGR23), is a 1,079 amino acid multi-pass membrane protein that belongs to the G-protein coupled receptor 2 family and LN-TM7 subfamily. Localizing to cell membrane and containing one GPS domain, GPR113 may function as an orphan receptor. GPR113 exists as two isoforms due to alternative splicing events.

Function:

Orphan receptor.

Subcellular Location:

Cell membrane; Multi-pass membrane protein.

Similarity:

Belongs to the G-protein coupled receptor 2 family. LN-TM7 subfamily. Contains 1 GPS domain.

SWISS:

Q8IZF5

Gene ID:

165082

Database links:

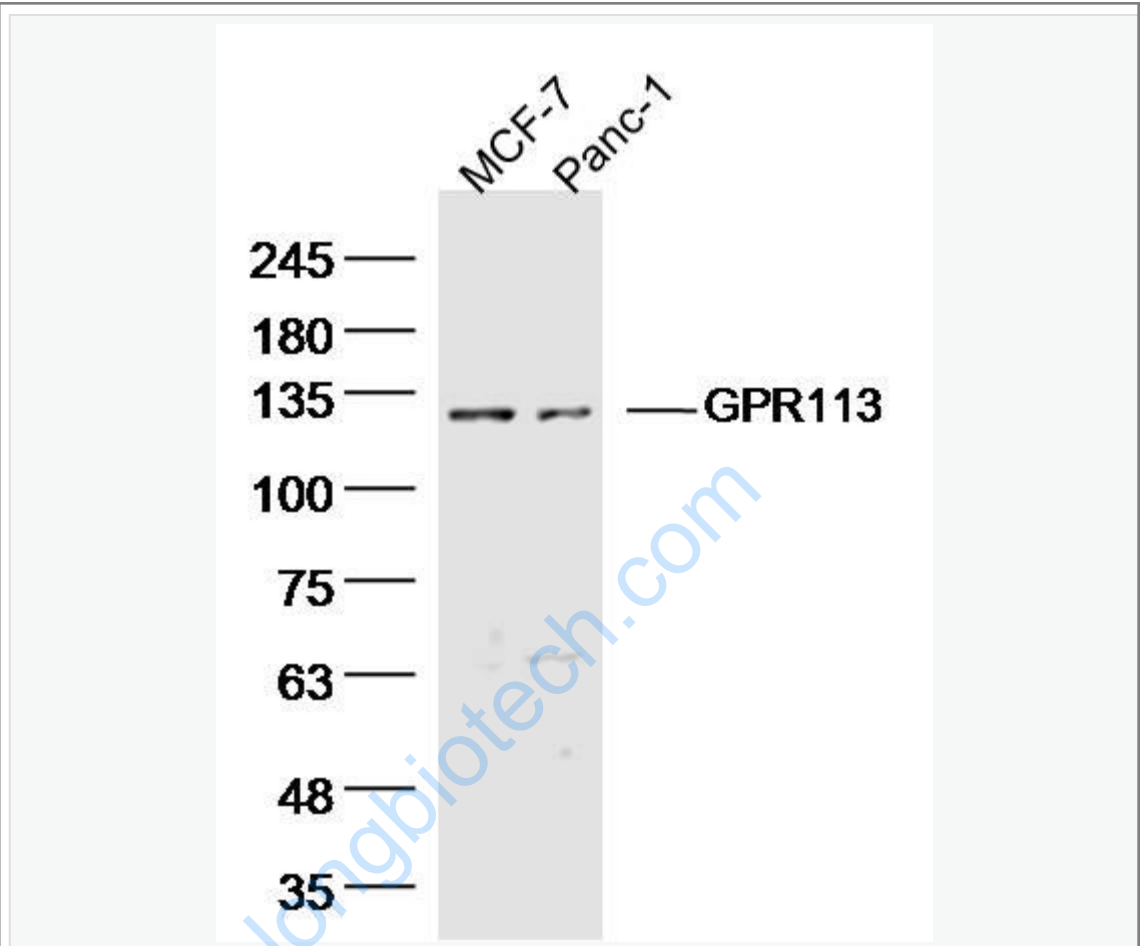
[Entrez Gene: 165082](#) Human

[SwissProt: Q8IZF5](#) Human

Important Note:

This product as supplied is intended for research use only, not for use in human, therapeutic or diagnostic applications.

Picture:



Sample:

MCF-7 Cell (Human) Lysate at 40 ug

Panc-1 Cell (Human) Lysate at 40 ug

Primary: Anti- GPR113 (SL15375R) at 1/300 dilution

Secondary: IRDye800CW Goat Anti-Rabbit IgG at 1/20000 dilution

Predicted band size: 114 kD

Observed band size: 120 kD