



## Rabbit Anti-GPR142 antibody

SL15378R

<b>Product Name:</b>	GPR142
<b>Chinese Name:</b>	G protein-coupled receptor GPR142 蛋白抗体
<b>Alias:</b>	G-protein coupled receptor PGR2; GP142; GPR142; PGR2; Probable G-protein coupled receptor 142; GP142 HUMAN.
<b>Organism Species:</b>	Rabbit
<b>Clonality:</b>	Polyclonal
<b>React Species:</b>	Human,
<b>Applications:</b>	WB=1:500-2000 ELISA=1:500-1000 IHC-P=1:400-800 IHC-F=1:400-800 ICC=1:100-500 IF=1:100-500 (Paraffin sections need antigen repair) not yet tested in other applications. optimal dilutions/concentrations should be determined by the end user.
<b>Molecular weight:</b>	51kDa
<b>Cellular localization:</b>	The cell membrane
<b>Form:</b>	Lyophilized or Liquid
<b>Concentration:</b>	1mg/ml
<b>immunogen:</b>	KLH conjugated synthetic peptide derived from human GPR142 :251-350/462<Extracellular>
<b>Lsotype:</b>	IgG
<b>Purification:</b>	affinity purified by Protein A
<b>Storage Buffer:</b>	0.01M TBS(pH7.4) with 1% BSA, 0.03% Proclin300 and 50% Glycerol.
<b>Storage:</b>	Store at -20 °C for one year. Avoid repeated freeze/thaw cycles. The lyophilized antibody is stable at room temperature for at least one month and for greater than a year when kept at -20°C. When reconstituted in sterile pH 7.4 0.01M PBS or diluent of antibody the antibody is stable for at least two weeks at 2-4 °C.
<b>PubMed:</b>	<a href="#">PubMed</a>
<b>Product Detail:</b>	GPR142 is a member of the rhodopsin family of G protein-coupled receptors (GPRs) (Fredriksson et al., 2003 [PubMed 14623098]).[supplied by OMIM, Mar 2008] <b>Function:</b> Orphan receptor.

**Subcellular Location:**

Cell membrane; Multi-pass membrane protein.

**Tissue Specificity:**

Exclusively expressed in the central nervous system, most abundantly in the ventrolateral region of caudate putamen, the habenular nucleus, the zona incerta, and the medial mammillary nucleus.

**Similarity:**

Belongs to the G-protein coupled receptor 1 family.

**SWISS:**

Q7Z601

**Gene ID:**

350383

**Database links:**

[Entrez Gene: 350383](#) Human

[Omim: 609046](#) Human

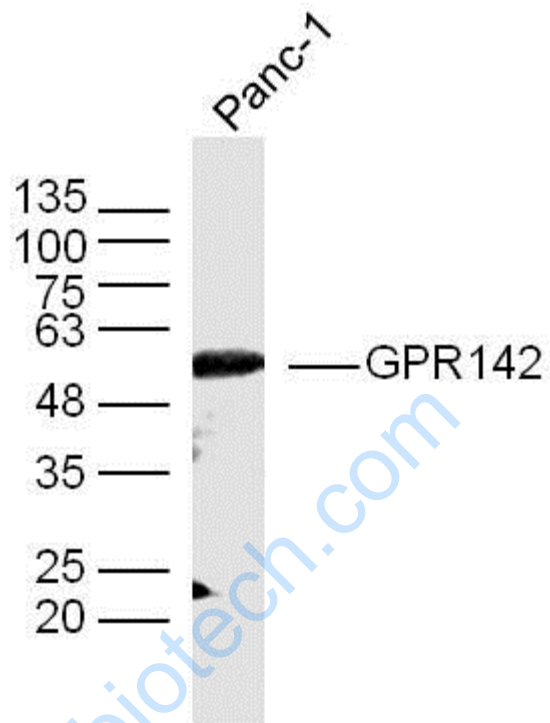
[SwissProt: Q7Z601](#) Human

[Unigene: 574368](#) Human

**Important Note:**

This product as supplied is intended for research use only, not for use in human, therapeutic or diagnostic applications.

Picture:



Sample: panc-1 (human) Cell Lysate at 40 ug

Primary: Anti-GPR142(SL15378R) at 1/300 dilution

Secondary: IRDye800CW Goat Anti-Rabbit IgG at 1/20000 dilution

Predicted band size: 51 kD

Observed band size: 51 kD