



Rabbit Anti-phospho-IKB epsilon (Ser22) antibody

SL15582R

Product Name:	phospho-IKB epsilon (Ser22)
Chinese Name:	NF-kappa-B抑制子epsilon抗体
Alias:	IKB epsilon (phospho S22); p-IKB epsilon (phospho S22); I kappa B epsilon; I-kappa-B-epsilon; IkappaBepsilon; Ikb E; Ikb-E; Ikb-epsilon; IKBE; IKBE_MOUSE; MGC72568; NF kappa B inhibitor epsilon; NF kappa BIE; NF-kappa-B inhibitor epsilon; NF-kappa-BIE; NFkappa BIE; NFkappaB inhibitor epsilon; NFkBIE; Nuclear factor of kappa light polypeptide gene enhancer in B cells inhibitor epsilon; OTTHUMP00000016522; Slc35b2; solute carrier family 35, member B2.
Organism Species:	Rabbit
Clonality:	Polyclonal
React Species:	Human,Mouse,Rat,Cow,Sheep,
Applications:	WB=1:500-2000ELISA=1:500-1000IHC-P=1:400-800IHC-F=1:400-800ICC=1:100-500IF=1:100-500 (Paraffin sections need antigen repair) not yet tested in other applications. optimal dilutions/concentrations should be determined by the end user.
Molecular weight:	39kDa
Cellular localization:	cytoplasmic
Form:	Lyophilized or Liquid
Concentration:	1mg/ml
immunogen:	KLH conjugated synthesised phosphopeptide derived from human IKB epsilon around the phosphorylation site of Ser22:LR(p-S)LR
Lsotype:	IgG
Purification:	affinity purified by Protein A
Storage Buffer:	0.01M TBS(pH7.4) with 1% BSA, 0.03% Proclin300 and 50% Glycerol.
Storage:	Store at -20 °C for one year. Avoid repeated freeze/thaw cycles. The lyophilized antibody is stable at room temperature for at least one month and for greater than a year when kept at -20°C. When reconstituted in sterile pH 7.4 0.01M PBS or diluent of antibody the antibody is stable for at least two weeks at 2-4 °C.
PubMed:	PubMed
Product Detail:	The protein encoded by this gene binds to components of NF-kappa-B, trapping the

complex in the cytoplasm and preventing it from activating genes in the nucleus. Phosphorylation of the encoded protein targets it for destruction by the ubiquitin pathway, which activates NF-kappa-B by making it available to translocate to the nucleus. [provided by RefSeq, Sep 2011]

Function:

Inhibits NF-kappa-B by complexing with and trapping it in the cytoplasm. Inhibits DNA-binding of NF-kappa-B p50-p65 and p50-c-Rel complexes.

Subunit:

Interacts with RELA, REL, NFKB1 nuclear factor NF-kappa-B p50 subunit and NFKB2 nuclear factor NF-kappa-B p52 subunit.

Subcellular Location:

Cytoplasm.

Post-translational modifications:

Serine phosphorylated; followed by proteasome-dependent degradation.

Similarity:

Belongs to the NF-kappa-B inhibitor family.
Contains 6 ANK repeats.

SWISS:

O00221

Gene ID:

4794

Database links:

[Entrez Gene: 4794](#) Human

[Entrez Gene: 18037](#) Mouse

[Omim: 604548](#) Human

[SwissProt: O00221](#) Human

[SwissProt: O54910](#) Mouse

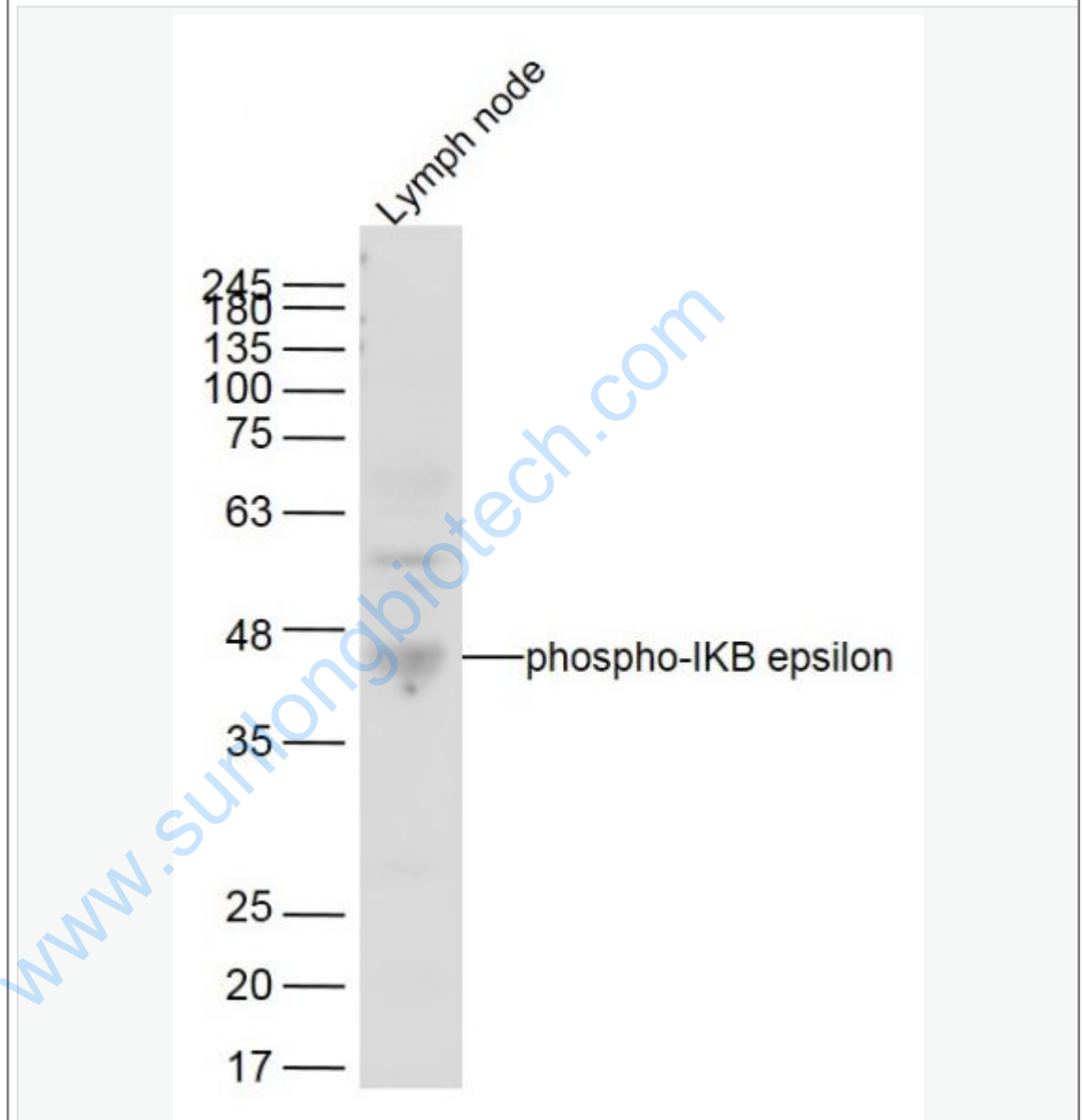
[Unigene: 458276](#) Human

[Unigene: 57043](#) Mouse

Important Note:

This product as supplied is intended for research use only, not for use in human, therapeutic or diagnostic applications.

Picture:



Sample:

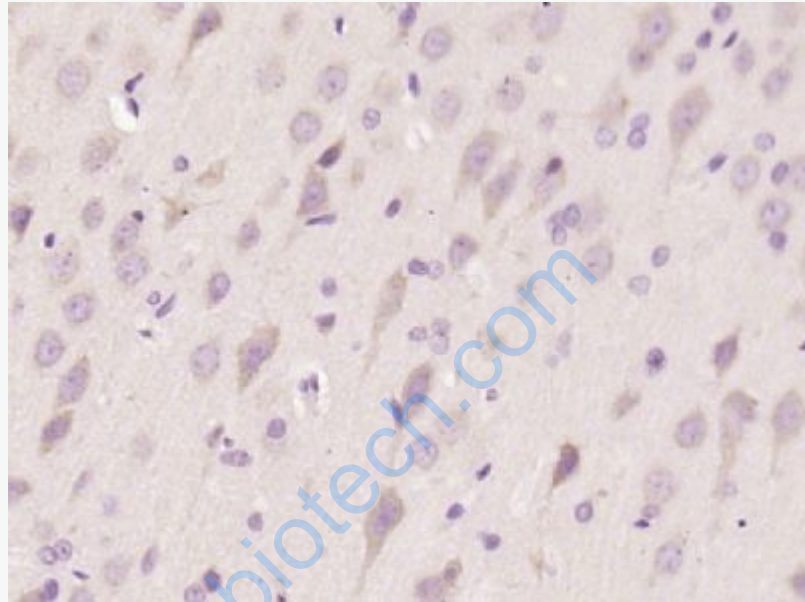
Lymph node (Mouse) Lysate at 40 ug

Primary: Anti-phospho-IKB epsilon (Ser22) (SL15582R) at 1/300 dilution

Secondary: IRDye800CW Goat Anti-Rabbit IgG at 1/20000 dilution

Predicted band size: 39 kD

Observed band size: 39 kD



Paraformaldehyde-fixed, paraffin embedded (rat brain tissue); Antigen retrieval by boiling in sodium citrate buffer (pH6.0) for 15min; Block endogenous peroxidase by 3% hydrogen peroxide for 20 minutes; Blocking buffer (normal goat serum) at 37°C for 30min; Antibody incubation with (IKB epsilon (Ser22)) Polyclonal Antibody, Unconjugated (SL15582R) at 1:400 overnight at 4°C, followed by operating according to SP Kit(Rabbit) (sp-0023) instructions and DAB staining.