



Rabbit Anti-TEM8 antibody

SL15583R

Product Name:	TEM8
Chinese Name:	Tumour血管内皮Maker8抗体
Alias:	Anthrax toxin receptor 1; Anthrax toxin receptor 1 precursor; ANTXR 1; ANTXR1; ATR; TEM-8; TEM 8; TEM8; Tumor Endothelial Marker 8; Tumor endothelial marker 8 precursor; ANTR1 HUMAN; Anthrax toxin receptor-1; FLJ11298; FLJ21776.
Organism Species:	Rabbit
Clonality:	Polyclonal
React Species:	Human,Mouse,Rat,Rabbit,
Applications:	WB=1:500-2000ELISA=1:500-1000IHC-P=1:400-800IHC-F=1:400-800ICC=1:100-500IF=1:100-500 (Paraffin sections need antigen repair) not yet tested in other applications. optimal dilutions/concentrations should be determined by the end user.
Molecular weight:	63kDa
Cellular localization:	The cell membrane
Form:	Lyophilized or Liquid
Concentration:	1mg/ml
immunogen:	KLH conjugated synthetic peptide derived from human TEM8:201-300/564<Extracellular>
Lsotype:	IgG
Purification:	affinity purified by Protein A
Storage Buffer:	0.01M TBS(pH7.4) with 1% BSA, 0.03% Proclin300 and 50% Glycerol.
Storage:	Store at -20 °C for one year. Avoid repeated freeze/thaw cycles. The lyophilized antibody is stable at room temperature for at least one month and for greater than a year when kept at -20°C. When reconstituted in sterile pH 7.4 0.01M PBS or diluent of antibody the antibody is stable for at least two weeks at 2-4 °C.
PubMed:	PubMed
Product Detail:	This gene encodes a type I transmembrane protein and is a tumor-specific endothelial marker that has been implicated in colorectal cancer. The encoded protein has been shown to also be a docking protein or receptor for Bacillus anthracis toxin, the causative agent of the disease, anthrax. The binding of the protective antigen (PA) component, of

the tripartite anthrax toxin, to this receptor protein mediates delivery of toxin components to the cytosol of cells. Once inside the cell, the other two components of anthrax toxin, edema factor (EF) and lethal factor (LF) disrupt normal cellular processes. Three alternatively spliced variants that encode different protein isoforms have been described. [provided by RefSeq, Oct 2008]

Function:

Plays a role in cell attachment and migration. Interacts with extracellular matrix proteins and with the actin cytoskeleton. Mediates adhesion of cells to type 1 collagen and gelatin, reorganization of the actin cytoskeleton and promotes cell spreading. Plays a role in the angiogenic response of cultured umbilical vein endothelial cells.

Subunit:

Interacts with gelatin and type 1 collagen. Interacts with the actin cytoskeleton. Binds to the protective antigen (PA) of Bacillus anthracis. Binding does not occur in the presence of calcium.

Subcellular Location:

Cell membrane; Single-pass type I membrane protein. Cell projection, lamellipodium membrane; Single-pass type I membrane protein. Cell projection, filopodium membrane; Single-pass type I membrane protein. Note=At the membrane of lamellipodia and at the tip of actin-enriched filopodia. Colocalizes with actin at the base of lamellipodia.

Tissue Specificity:

Detected in umbilical vein endothelial cells (at protein level). Highly expressed in tumor endothelial cells.

DISEASE:

Defects in ANTXR1 are associated with susceptibility to hemangioma capillary infantile (HCI) [MIM:602089]. HCI are benign, highly proliferative lesions involving aberrant localized growth of capillary endothelium. They are the most common tumor of infancy, occurring in up to 10% of all births. Hemangiomas tend to appear shortly after birth and show rapid neonatal growth for up to 12 months characterized by endothelial hypercellularity and increased numbers of mast cells. This phase is followed by slow involution at a rate of about 10% per year and replacement by fibrofatty stroma

Similarity:

Belongs to the ATR family.
Contains 1 VWFA domain.

SWISS:

Q9H6X2

Gene ID:

84168

Database links:

[Entrez Gene: 84168](#) Human

[Entrez Gene: 69538](#) Mouse

[Entrez Gene: 362393](#) Rat

[Omim: 606410](#) Human

[SwissProt: Q9H6X2](#) Human

[SwissProt: Q9CZ52](#) Mouse

[SwissProt: Q0PMD2](#) Rat

[Unigene: 165859](#) Human

[Unigene: 232525](#) Mouse

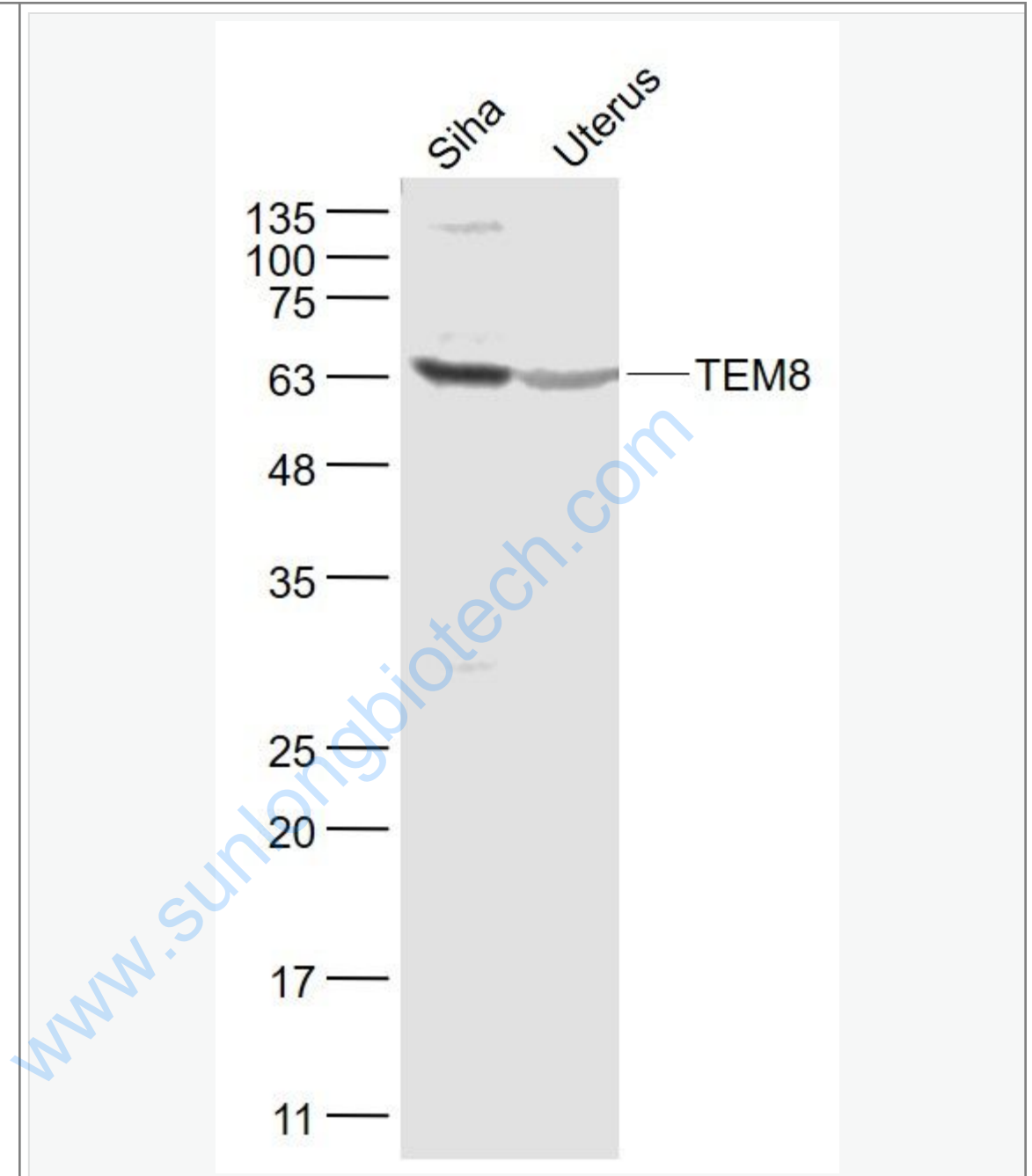
[Unigene: 41192](#) Rat

Important Note:

This product as supplied is intended for research use only, not for use in human, therapeutic or diagnostic applications.

www.suningbiotech.com

Picture:



Sample:

Siha(Human) Cell Lysate at 30 ug

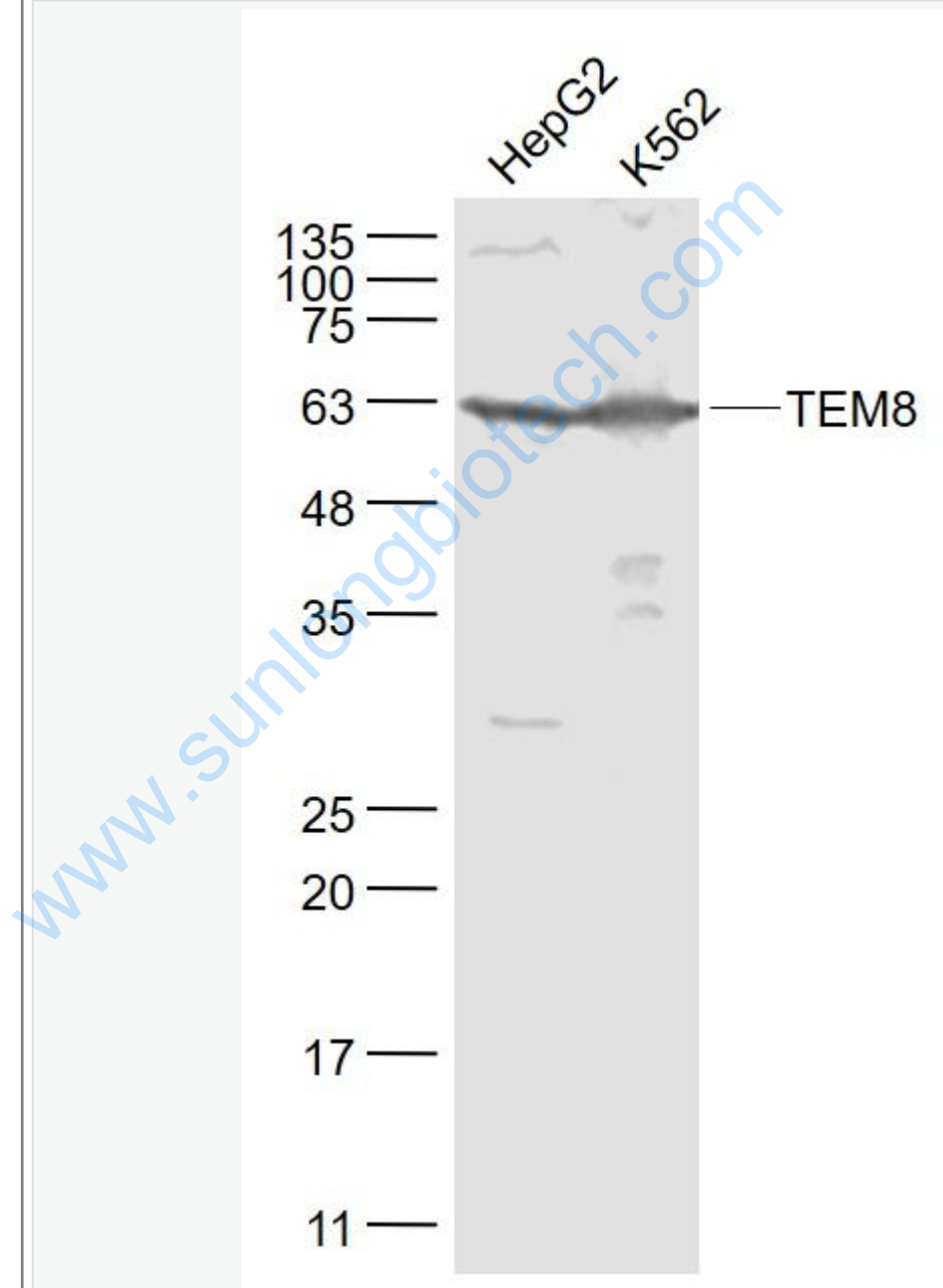
Uterus (Mouse) Lysate at 40 ug

Primary: Anti- TEM8 (SL15583R) at 1/1000 dilution

Secondary: IRDye800CW Goat Anti-Rabbit IgG at 1/20000 dilution

Predicted band size: 59 kD

Observed band size: 62 kD



Sample:

HepG2(Human) Cell Lysate at 30 ug

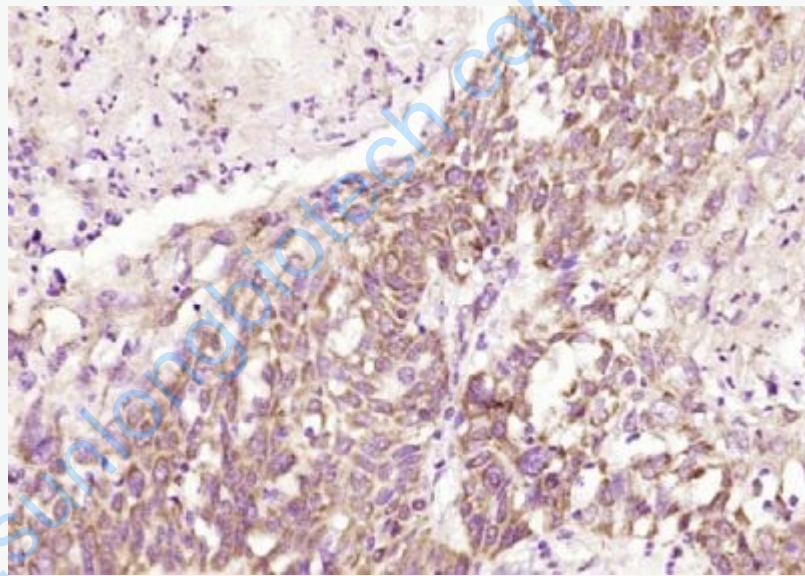
K562(Human) Cell Lysate at 30 ug

Primary: Anti- TEM8 (SL15583R) at 1/1000 dilution

Secondary: IRDye800CW Goat Anti-Rabbit IgG at 1/20000 dilution

Predicted band size: 59 kD

Observed band size: 62 kD



Paraformaldehyde-fixed, paraffin embedded (Human esophageal cancer); Antigen retrieval by boiling in sodium citrate buffer (pH6.0) for 15min; Block endogenous peroxidase by 3% hydrogen peroxide for 20 minutes; Blocking buffer (normal goat serum) at 37°C for 30min; Antibody incubation with (TEM8) Polyclonal Antibody, Unconjugated (SL15583R) at 1:200 overnight at 4°C, followed by operating according to SP Kit(Rabbit) (sp-0023) instructions and DAB staining.