



## Rabbit Anti-CK19 antibody

SL15590R

|                               |                                                                                                                                                                                                                                                                                                                                                                                                                                                                                                                                                            |
|-------------------------------|------------------------------------------------------------------------------------------------------------------------------------------------------------------------------------------------------------------------------------------------------------------------------------------------------------------------------------------------------------------------------------------------------------------------------------------------------------------------------------------------------------------------------------------------------------|
| <b>Product Name:</b>          | CK19                                                                                                                                                                                                                                                                                                                                                                                                                                                                                                                                                       |
| <b>Chinese Name:</b>          | 细胞角蛋白19抗体                                                                                                                                                                                                                                                                                                                                                                                                                                                                                                                                                  |
| <b>Alias:</b>                 | K1C19_HUMAN; Keratin, type I cytoskeletal 19; Cytokeratin 19; Cytokeratin-19; CK-19; Keratin-19; CYFRA21-1; K19.                                                                                                                                                                                                                                                                                                                                                                                                                                           |
| <b>Organism Species:</b>      | Rabbit                                                                                                                                                                                                                                                                                                                                                                                                                                                                                                                                                     |
| <b>Clonality:</b>             | Polyclonal                                                                                                                                                                                                                                                                                                                                                                                                                                                                                                                                                 |
| <b>React Species:</b>         | Human,                                                                                                                                                                                                                                                                                                                                                                                                                                                                                                                                                     |
| <b>Applications:</b>          | ELISA=1:500-1000IHC-P=1:400-800IHC-F=1:400-800Flow-Cyt=1µg/TestIF=1:100-500 (Paraffin sections need antigen repair)<br>not yet tested in other applications.<br>optimal dilutions/concentrations should be determined by the end user.                                                                                                                                                                                                                                                                                                                     |
| <b>Molecular weight:</b>      | 30kDa                                                                                                                                                                                                                                                                                                                                                                                                                                                                                                                                                      |
| <b>Cellular localization:</b> | cytoplasmicThe cell membraneExtracellular matrix                                                                                                                                                                                                                                                                                                                                                                                                                                                                                                           |
| <b>Form:</b>                  | Lyophilized or Liquid                                                                                                                                                                                                                                                                                                                                                                                                                                                                                                                                      |
| <b>Concentration:</b>         | 1mg/ml                                                                                                                                                                                                                                                                                                                                                                                                                                                                                                                                                     |
| <b>immunogen:</b>             | KLH conjugated synthetic peptide derived from human CK19 :301-400/400                                                                                                                                                                                                                                                                                                                                                                                                                                                                                      |
| <b>Lsotype:</b>               | IgG                                                                                                                                                                                                                                                                                                                                                                                                                                                                                                                                                        |
| <b>Purification:</b>          | affinity purified by Protein A                                                                                                                                                                                                                                                                                                                                                                                                                                                                                                                             |
| <b>Storage Buffer:</b>        | 0.01M TBS(pH7.4) with 1% BSA, 0.03% Proclin300 and 50% Glycerol.                                                                                                                                                                                                                                                                                                                                                                                                                                                                                           |
| <b>Storage:</b>               | Store at -20 °C for one year. Avoid repeated freeze/thaw cycles. The lyophilized antibody is stable at room temperature for at least one month and for greater than a year when kept at -20°C. When reconstituted in sterile pH 7.4 0.01M PBS or diluent of antibody the antibody is stable for at least two weeks at 2-4 °C.                                                                                                                                                                                                                              |
| <b>PubMed:</b>                | <a href="#">PubMed</a>                                                                                                                                                                                                                                                                                                                                                                                                                                                                                                                                     |
| <b>Product Detail:</b>        | The protein encoded by this gene is a member of the keratin family. The keratins are intermediate filament proteins responsible for the structural integrity of epithelial cells and are subdivided into cytokeratins and hair keratins. The type I cytokeratins consist of acidic proteins which are arranged in pairs of heterotypic keratin chains. Unlike its related family members, this smallest known acidic cytokeratin is not paired with a basic cytokeratin in epithelial cells. It is specifically expressed in the periderm, the transiently |

superficial layer that envelops the developing epidermis. The type I cytokeratins are clustered in a region of chromosome 17q12-q21. [provided by RefSeq, Jul 2008].

**Function:**

Involved in the organization of myofibers. Together with KRT8, helps to link the contractile apparatus to dystrophin at the costameres of striated muscle.

**Subunit:**

Heterotetramer of two type I and two type II keratins. Interacts with PNN and the actin-binding domain of DMD. Interacts with HCV core protein.

**Tissue Specificity:**

Expressed in a defined zone of basal keratinocytes in the deep outer root sheath of hair follicles. Also observed in sweat gland and mammary gland ductal and secretory cells, bile ducts, gastrointestinal tract, bladder urothelium, oral epithelia, esophagus, ectocervical epithelium (at protein level). Expressed in epidermal basal cells, in nipple epidermis and a defined region of the hair follicle. Also seen in a subset of vascular wall cells in both the veins and artery of human umbilical cord, and in umbilical cord vascular smooth muscle. Observed in muscle fibers accumulating in the costameres of myoplasm at the sarcolemma in structures that contain dystrophin and spectrin.

**Similarity:**

Belongs to the intermediate filament family.

**SWISS:**

P08727

**Gene ID:**

3880

**Database links:**

[Entrez Gene: 3880](#)Human

[Entrez Gene: 16669](#)Mouse

[Oimim: 148020](#)Human

[SwissProt: P08727](#)Human

[SwissProt: P19001](#)Mouse

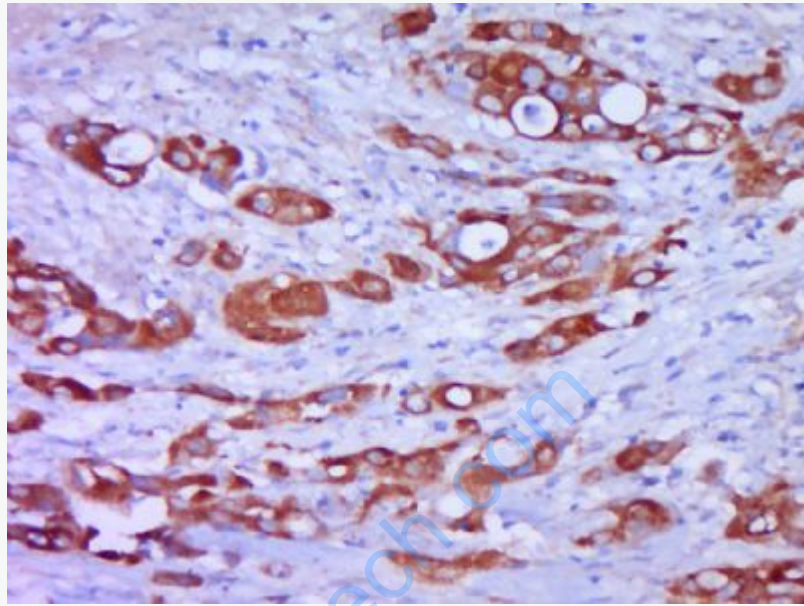
[Unigene: 654568](#)Human

[Unigene: 439699](#)Mouse

**Important Note:**

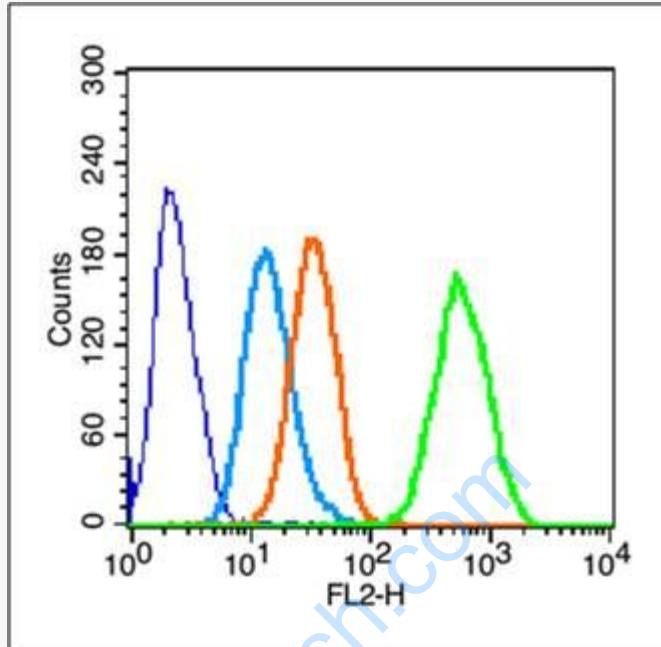
This product as supplied is intended for research use only, not for use in human,

therapeutic or diagnostic applications.



**Picture:**

Paraformaldehyde-fixed, paraffin embedded (Human stomach cancer); Antigen retrieval by boiling in sodium citrate buffer (pH6.0) for 15min; Block endogenous peroxidase by 3% hydrogen peroxide for 20 minutes; Blocking buffer (normal goat serum) at 37°C for 30min; Antibody incubation with (CK19) Polyclonal Antibody, Unconjugated (SL15590R) at 1:400 overnight at 4°C, followed by operating according to SP Kit(Rabbit) (sp-0023) instructions and DAB staining.



Blank control (blue line): HeLa (fixed with 70% methanol (Overnight at 4°C) and then permeabilized with 90% ice-cold methanol for 20 min at -20°C).

Primary Antibody (green line): Rabbit Anti-CK19 antibody (SL15590R), Dilution: 0.2 µg / 10<sup>6</sup> cells;

Isotype Control Antibody (orange line): Rabbit IgG .

Secondary Antibody (white blue line): Goat anti-rabbit IgG-PE, Dilution: 1 µg / test.