



Rabbit Anti-GLP-1R antibody

SL1559R

Product Name:	GLP-1R
Chinese Name:	胰高血糖素样肽-1受体/GLP-1受体抗体
Alias:	Glucagon like peptide-1 receptor; GLP 1 R; GLP 1 receptor; GLP 1R; Glp1r; GLP; glp1r; Glucagon like peptide 1 receptor; RATGL1RCP; Glip;MGC138331; GLP-1-R; GLP1R_HUMAN; Glucagon-like peptide 1 receptor; GLP-1 receptor; GLP-1-R; GLP-1R; Precursor.
文献引用 PubMed :	<p>Specific References(2) SL1559R has been referenced in 2 publications.</p> <p>[IF=5.71]Zhou, Hao, et al. "Exendin-4 protects ADMSCs from apoptosis induced by Hydrogen peroxide through PI3K/Akt-Sfrp2 pathways." Free Radical Biology and Medicine (2014).Rat. PubMed:25452142</p> <p>[IF=3.06]Nagai, Takuo, et al. "Linagliptin Ameliorates Methylglyoxal-Induced Peritoneal Fibrosis in Mice." PLOS ONE 11.8 (2016): e0160993.WB, IHC-P;Mouse. PubMed:27513960</p>
Organism Species:	Rabbit
Clonality:	Polyclonal
React Species:	Human,Mouse,Rat,Dog,
Applications:	WB=1:500-2000ELISA=1:500-1000IHC-P=1:400-800IHC-F=1:400-800ICC=1:100-500IF=1:100-500 (Paraffin sections need antigen repair) not yet tested in other applications. optimal dilutions/concentrations should be determined by the end user.
Molecular weight:	51kDa
Cellular localization:	cytoplasmicThe cell membrane
Form:	Lyophilized or Liquid
Concentration:	1mg/ml
immunogen:	KLH conjugated synthetic peptide derived from human GLP-1R:101-

	200/463<Extracellular>
Lsotype:	IgG
Purification:	affinity purified by Protein A
Storage Buffer:	0.01M TBS(pH7.4) with 1% BSA, 0.03% Proclin300 and 50% Glycerol.
Storage:	Store at -20 °C for one year. Avoid repeated freeze/thaw cycles. The lyophilized antibody is stable at room temperature for at least one month and for greater than a year when kept at -20°C. When reconstituted in sterile pH 7.4 0.01M PBS or diluent of antibody the antibody is stable for at least two weeks at 2-4 °C.
PubMed:	PubMed
Product Detail:	<p>GLP1R is a receptor for glucagon-like peptide 1. The activity of this receptor is mediated by G proteins which activate adenylyl cyclase. It has been suggested that this protein influences the feelings of satiety or hunger, sensation of glucose levels, control of glucagon sensitivity of islets, and non insulin-dependent diabetes mellitus. GLP1R is believed to be expressed in human pancreas, lung, brain, stomach, kidney and heart. ESTs have been isolated from skin and kidney libraries.</p> <p>Function: This is a receptor for glucagon-like peptide 1. The activity of this receptor is mediated by G proteins which activate adenylyl cyclase.</p> <p>Subunit: May form homodimers and heterodimers with GIPR.</p> <p>Subcellular Location: Cell membrane; Multi-pass membrane protein.</p> <p>Post-translational modifications: N-glycosylation enhances cell surface expression and lengthens receptor half-life by preventing degradation in the ER.</p> <p>Similarity: Belongs to the G-protein coupled receptor 2 family.</p> <p>SWISS: O35659</p> <p>Gene ID: 2740</p> <p>Database links: Entrez Gene: 2740Human Entrez Gene: 14652Mouse Entrez Gene: 25051Rat</p>

[Omid: 138032](#)Human

[SwissProt: P43220](#)Human

[SwissProt: O35659](#)Mouse

[SwissProt: P32301](#)Rat

[Unigene: 389103](#)Human

[Unigene: 390969](#)Mouse

[Unigene: 11408](#)Rat

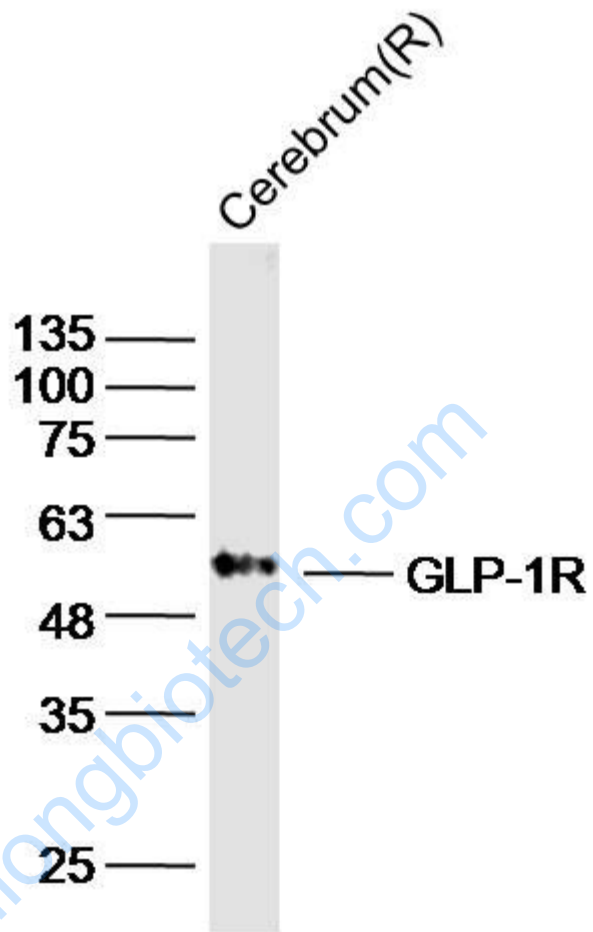
Important Note:

This product as supplied is intended for research use only, not for use in human, therapeutic or diagnostic applications.

GLP-1R是GLP-1在体内作用的主要靶点,它是一个7次跨膜的G protein-coupled receptor,以cAMP为主要第二信使。GLP-1与GLP-1R结合过程是一个两结构域相互作用的过程,都与胰岛素分泌和糖代谢调节密切相关。

www.sunlongbio.com

Picture:



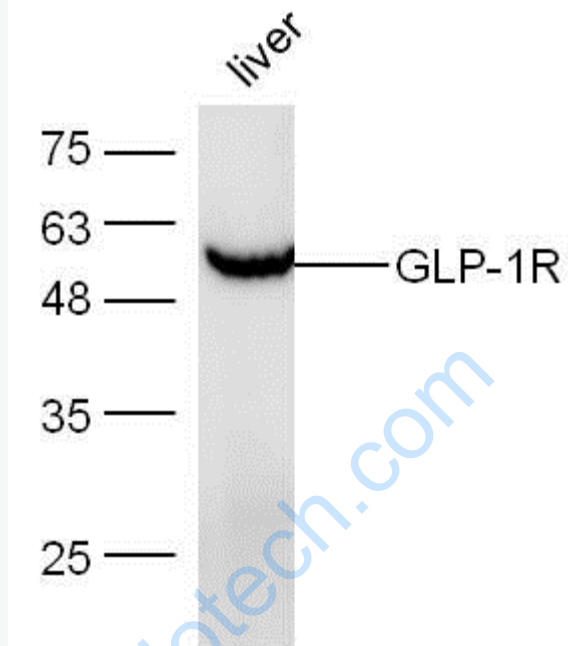
Sample: Cerebrum(Rat) Lysate at 40 ug

Primary: Anti-GLP-1R (SL1559R) at 1/300 dilution

Secondary: IRDye800CW Goat Anti-Rabbit IgG at 1/20000 dilution

Predicted band size: 51 kD

Observed band size: 51 kD



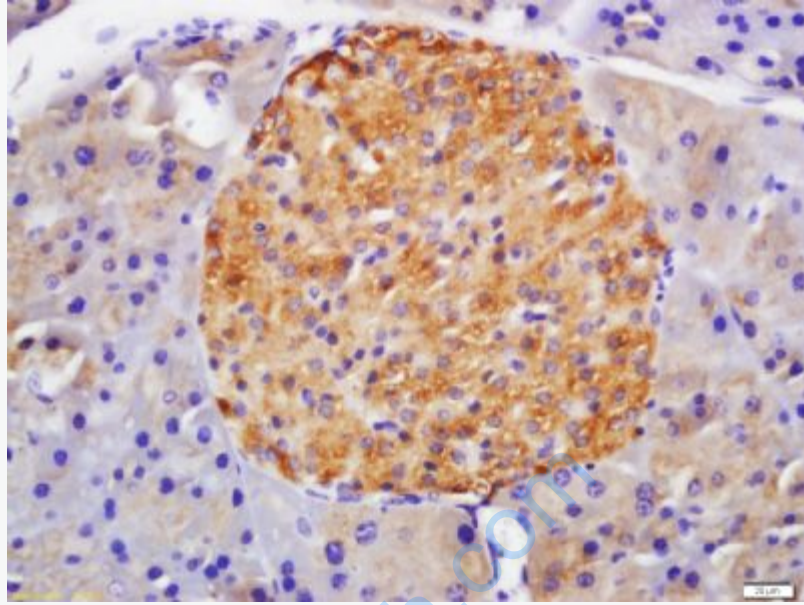
Sample: Liver (Mouse) lysate at 30 ug;

Primary: Anti- GLP-1R (SL1559R) at 1:300 dilution;

Secondary: HRP conjugated Goat-Anti-rabbit IgG(SL1559R) at 1: 5000 dilution;

Predicted band size: 51 kD

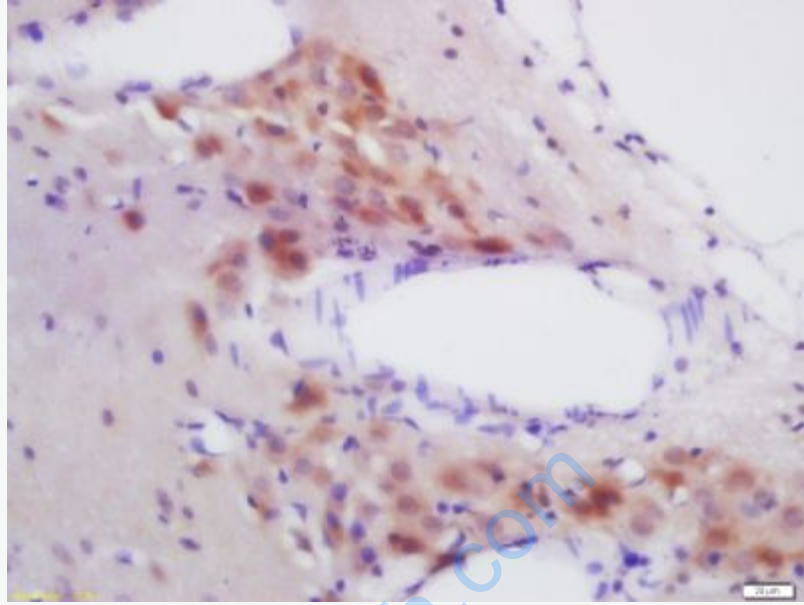
Observed band size: 51 kD



Tissue/cell: mouse pancreas tissue; 4% Paraformaldehyde-fixed and paraffin-embedded;

Antigen retrieval: citrate buffer (0.01M, pH 6.0), Boiling bathing for 15min; Block endogenous peroxidase by 3% Hydrogen peroxide for 30min; Blocking buffer (normal goat serum,C-0005) at 37°C for 20 min;

Incubation: Anti-GLP-1R Polyclonal Antibody, Unconjugated(SL1559R) 1:200, overnight at 4°C, followed by conjugation to the secondary antibody(SP-0023) and DAB(C-0010) staining



Tissue/cell: rat brain tissue; 4% Paraformaldehyde-fixed and paraffin-embedded;
Antigen retrieval: citrate buffer (0.01M, pH 6.0), Boiling bathing for 15min; Block endogenous peroxidase by 3% Hydrogen peroxide for 30min; Blocking buffer (normal goat serum,C-0005) at 37°C for 20 min;
Incubation: Anti-GLP-1R Polyclonal Antibody, Unconjugated(SL1559R) 1:200, overnight at 4°C, followed by conjugation to the secondary antibody(SP-0023) and DAB(C-0010) staining