



## Rabbit Anti-Annexin A1 antibody

SL1562R

<b>Product Name:</b>	Annexin A1
<b>Chinese Name:</b>	膜粘连蛋白A1抗体
<b>Alias:</b>	Annexin A1; Annexin I; AnnexinA1; AnnexinI; ANX 1; ANX A1; ANX1; ANXA 1; ANXA1; ANXA1 protein; Calpactin II; CalpactinII; Chromobindin 9; Chromobindin9; HGNC:533; Lipocortin 1; Lipocortin I; Lipocortin1; LipocortinI; LPC 1; LPC1; p35; Phospholipase A2 inhibitory protein; ANXA1_HUMAN.
<b>文献引用</b> PubMed :	<p><b>Specific References(2)</b> SL1562R has been referenced in 2 publications.</p> <p><b>[IF=3.35]</b>Li, Yangguang, et al. "Glycoproteomic analysis of tissues from patients with colon cancer using lectin microarrays and nanoLC-MS/MS." Mol. BioSyst. (2013).<b>WB;Human.</b>  <a href="#">PubMed:23567825</a></p> <p><b>[IF=2.46]</b>Wang, Zhong-Chao, et al. "2D-DIGE proteomic analysis of changes in estrogen/progesterone-induced rat breast hyperplasia upon treatment with the Mongolian remedy RuXian-I." Molecules 16.4 (2011): 3048-3065.<b>Rat.</b>  <a href="#">PubMed:21478820</a></p>
<b>Organism Species:</b>	Rabbit
<b>Clonality:</b>	Polyclonal
<b>React Species:</b>	Human,Mouse,Rat,Pig,Cow,Horse,Rabbit,
<b>Applications:</b>	WB=1:500-2000ELISA=1:500-1000IHC-P=1:400-800IHC-F=1:400-800IF=1:100-500 (Paraffin sections need antigen repair) not yet tested in other applications. optimal dilutions/concentrations should be determined by the end user.
<b>Molecular weight:</b>	39kDa
<b>Cellular localization:</b>	The nucleuscytoplasmicThe cell membrane
<b>Form:</b>	Lyophilized or Liquid

<b>Concentration:</b>	1mg/ml
<b>immunogen:</b>	KLH conjugated synthetic peptide derived from human Annexin A1:281-346/346
<b>Lsotype:</b>	IgG
<b>Purification:</b>	affinity purified by Protein A
<b>Storage Buffer:</b>	0.01M TBS(pH7.4) with 1% BSA, 0.03% Proclin300 and 50% Glycerol.
<b>Storage:</b>	Store at -20 °C for one year. Avoid repeated freeze/thaw cycles. The lyophilized antibody is stable at room temperature for at least one month and for greater than a year when kept at -20°C. When reconstituted in sterile pH 7.4 0.01M PBS or diluent of antibody the antibody is stable for at least two weeks at 2-4 °C.
<b>PubMed:</b>	<a href="#">PubMed</a>
<b>Product Detail:</b>	<p>This gene encodes a protein that belongs to a family of Ca(2+) dependent phospholipid binding proteins which have a molecular weight of approximately 35,000 to 40,000 and are preferentially located on the cytosolic face of the plasma membrane. Annexin I protein has an apparent relative molecular mass of 40 kDa, with phospholipase A2 inhibitory activity. Since phospholipase A2 is required for the biosynthesis of the potent mediators of inflammation, prostaglandins and leukotrienes, annexin I may have potential anti inflammatory activity.</p> <p><b>Function:</b> Calcium/phospholipid-binding protein which promotes membrane fusion and is involved in exocytosis. This protein regulates phospholipase A2 activity. It seems to bind from two to four calcium ions with high affinity.</p> <p><b>Subunit:</b> Homodimer in placenta (20%); linked by transglutamylation. Interacts with DYSF (By similarity).</p> <p><b>Subcellular Location:</b> Nucleus. Cytoplasm. Cell projection, cilium. Basolateral cell membrane. Note=Found in the cilium, nucleus and basolateral cell membrane of ciliated cells in the tracheal endothelium. Found in the cytoplasm of type II pneumocytes and alveolar macrophages.</p> <p><b>Post-translational modifications:</b> Phosphorylated by protein kinase C, epidermal growth factor receptor/kinase and TRPM7. Phosphorylation results in loss of the inhibitory activity.</p> <p><b>Similarity:</b> Belongs to the annexin family. Contains 4 annexin repeats.</p> <p><b>SWISS:</b> P04083</p> <p><b>Gene ID:</b> 301</p>

**Database links:**

[Entrez Gene: 301](#) Human

[Entrez Gene: 16952](#) Mouse

[Entrez Gene: 25380](#) Rat

[Omim: 151690](#) Human

[SwissProt: P04083](#) Human

[SwissProt: P10107](#) Mouse

[SwissProt: P07150](#) Rat

[Unigene: 494173](#) Human

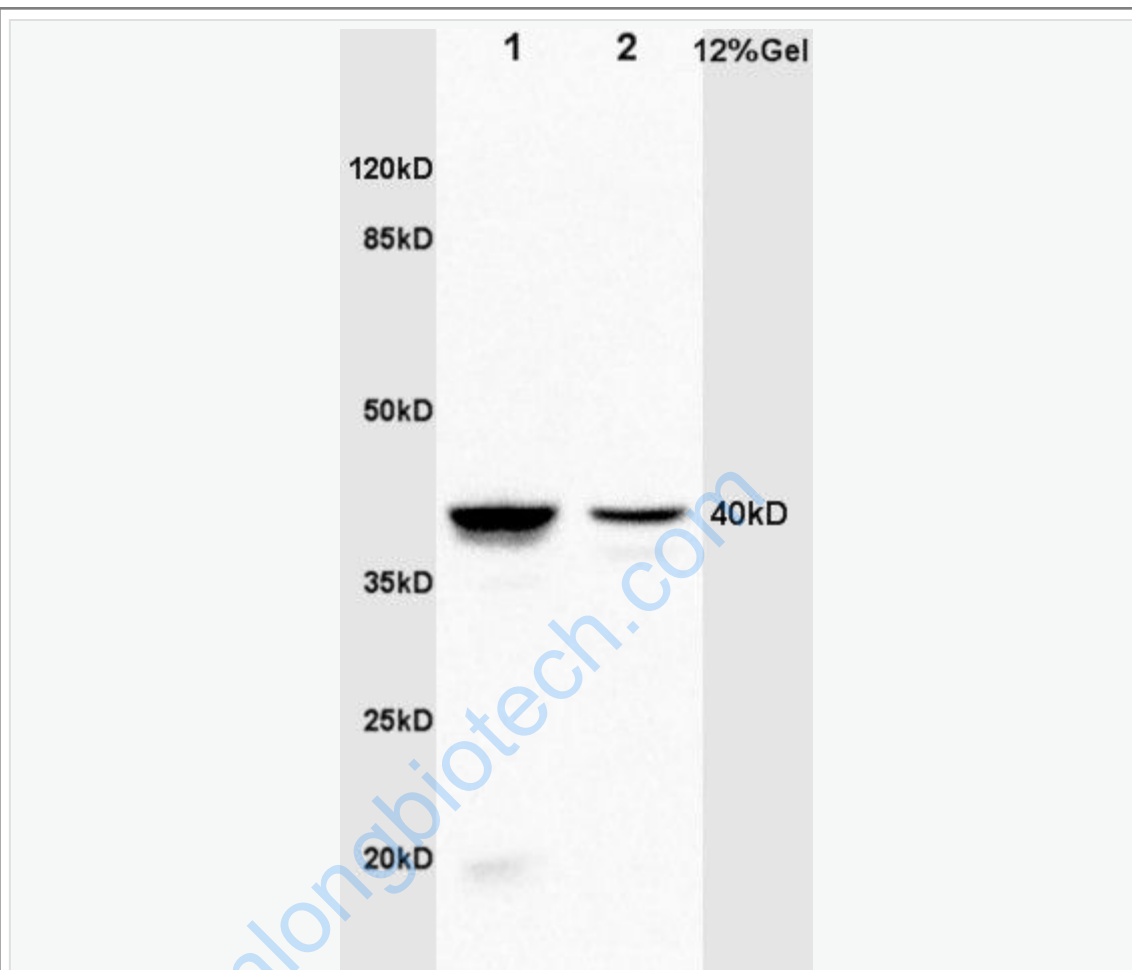
[Unigene: 248360](#) Mouse

[Unigene: 1792](#) Rat

**Important Note:**

This product as supplied is intended for research use only, not for use in human, therapeutic or diagnostic applications.

Picture:



Sample:

Lane1: Kidney(Rat) Lysate at 30 ug

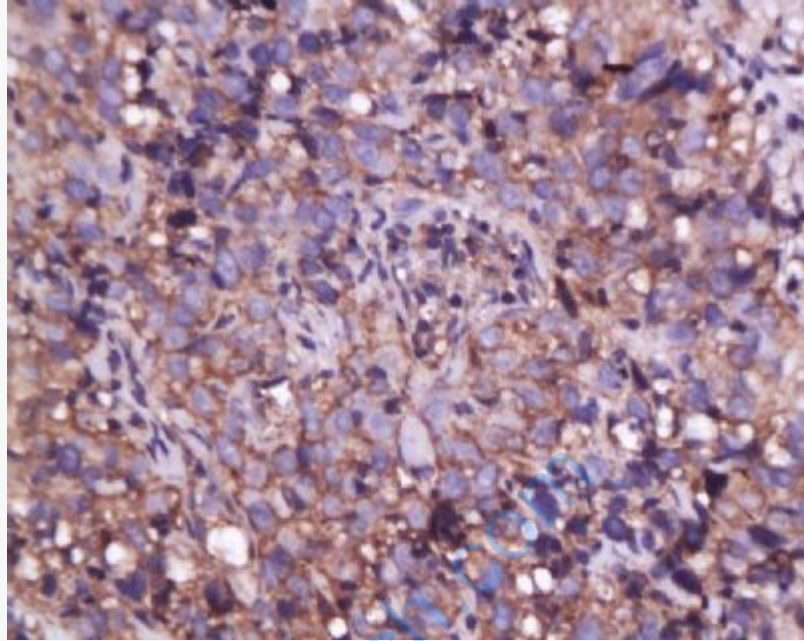
Lane2: Brain(Rat) Lysate at 30 ug

Primary: Anti-Annexin A1 (SL1562R) at 1:200 dilution;

Secondary: HRP conjugated Goat Anti-Rabbit IgG(SL1562R) at 1: 3000 dilution;

Predicted band size : 39kD

Observed band size : 40kD



Tissue/cell: human cervical carcinoma; 4% Paraformaldehyde-fixed and paraffin-embedded;

Antigen retrieval: citrate buffer ( 0.01M, pH 6.0 ), Boiling bathing for 15min; Block endogenous peroxidase by 3% Hydrogen peroxide for 30min; Blocking buffer (normal goat serum,C-0005) at 37°C for 20 min;

Incubation: Anti-Annexin A1 Polyclonal Antibody, Unconjugated(SL1562R) 1:200, overnight at 4°C, followed by conjugation to the secondary antibody(SP-0023) and DAB(C-0010) staining