



Rabbit Anti-APCDD1 antibody

SL1565R

Product Name:	APCDD1
Chinese Name:	腺瘤性息肉调节蛋白抗体
Alias:	adenomatosis polyposis coli down-regulated 1; Adenomatosis polyposis coli down regulated 1; Adenomatosis polyposis coli down regulated 1 protein; APCDD 1; B7323; DRAPC1; FP7019; Protein APCDD1; APCD1_HUMAN.
Organism Species:	Rabbit
Clonality:	Polyclonal
React Species:	Human,Mouse,Rat,Chicken,Dog,Rabbit,
Applications:	WB=1:500-2000ELISA=1:500-1000IHC-P=1:400-800IHC-F=1:400-800IF=1:100-500 (Paraffin sections need antigen repair) not yet tested in other applications. optimal dilutions/concentrations should be determined by the end user.
Molecular weight:	56kDa
Cellular localization:	The cell membrane
Form:	Lyophilized or Liquid
Concentration:	1mg/ml
immunogen:	KLH conjugated synthetic peptide derived from human APCDD1:30-130/514
Lsotype:	IgG
Purification:	affinity purified by Protein A
Storage Buffer:	0.01M TBS(pH7.4) with 1% BSA, 0.03% Proclin300 and 50% Glycerol.
Storage:	Store at -20 °C for one year. Avoid repeated freeze/thaw cycles. The lyophilized antibody is stable at room temperature for at least one month and for greater than a year when kept at -20°C. When reconstituted in sterile pH 7.4 0.01M PBS or diluent of antibody the antibody is stable for at least two weeks at 2-4 °C.
PubMed:	PubMed
Product Detail:	APCDD1 is a novel protein that has been shown to be a target of Wnt/beta catenin signaling pathway in cancer cell lines. APCDD1 is overexpressed in colorectal carcinogenesis and is deregulated in CTNNB1 mutated Wilms tumors. [FUNCTION] Probably plays a role in colorectal tumorigenesis. May be a developmental target gene of the Wnt/Beta-catenin pathway.

[SUBCELLULAR LOCATION] Membrane; Single-pass type I membrane protein (Potential).

[TISSUE SPECIFICITY] Abundantly expressed in heart, pancreas, prostate and ovary. Moderately expressed in lung, liver, kidney, spleen, thymus, colon and peripheral lymphocytes.

[INDUCTION] Transcriptionally regulated by the CTNNB1/TF7L2 complex.

Function:

Negative regulator of the Wnt signaling pathway. Inhibits Wnt signaling in a cell-autonomous manner and functions upstream of beta-catenin. May act via its interaction with Wnt and LRP proteins. May play a role in colorectal tumorigenesis.

Subunit:

Homodimer. Interacts with LRP5 and WNT3A.

Subcellular Location:

Cell membrane; Single-pass type I membrane protein.

Tissue Specificity:

Abundantly expressed in heart, pancreas, prostate and ovary. Moderately expressed in lung, liver, kidney, spleen, thymus, colon and peripheral lymphocytes. Abundantly expressed in both the epidermal and dermal compartments of the hair follicle. Present in scalp skin Highly expressed in the hair follicle dermal papilla, the matrix, and the hair shaft (at protein level).

Post-translational modifications:

N-Glycosylated.

DISEASE:

Hypotrichosis 1 (HYPT1) [MIM:605389]: A rare form of non-syndromic hereditary hypotrichosis without characteristic hair shaft anomalies. Affected individuals typically show normal hair at birth, but hair loss and thinning of the hair shaft start during early childhood and progress with age. Note=The disease is caused by mutations affecting the gene represented in this entry.

Similarity:

Belongs to the APCDD1 family.

SWISS:

Q8J025

Gene ID:

147495

Database links:

[Entrez Gene: 147495](#)Human

[Entrez Gene: 494504](#)Mouse

[Oimim: 607479](#)Human

[SwissProt: Q8J025](#)Human

[SwissProt: Q3U128](#)Mouse

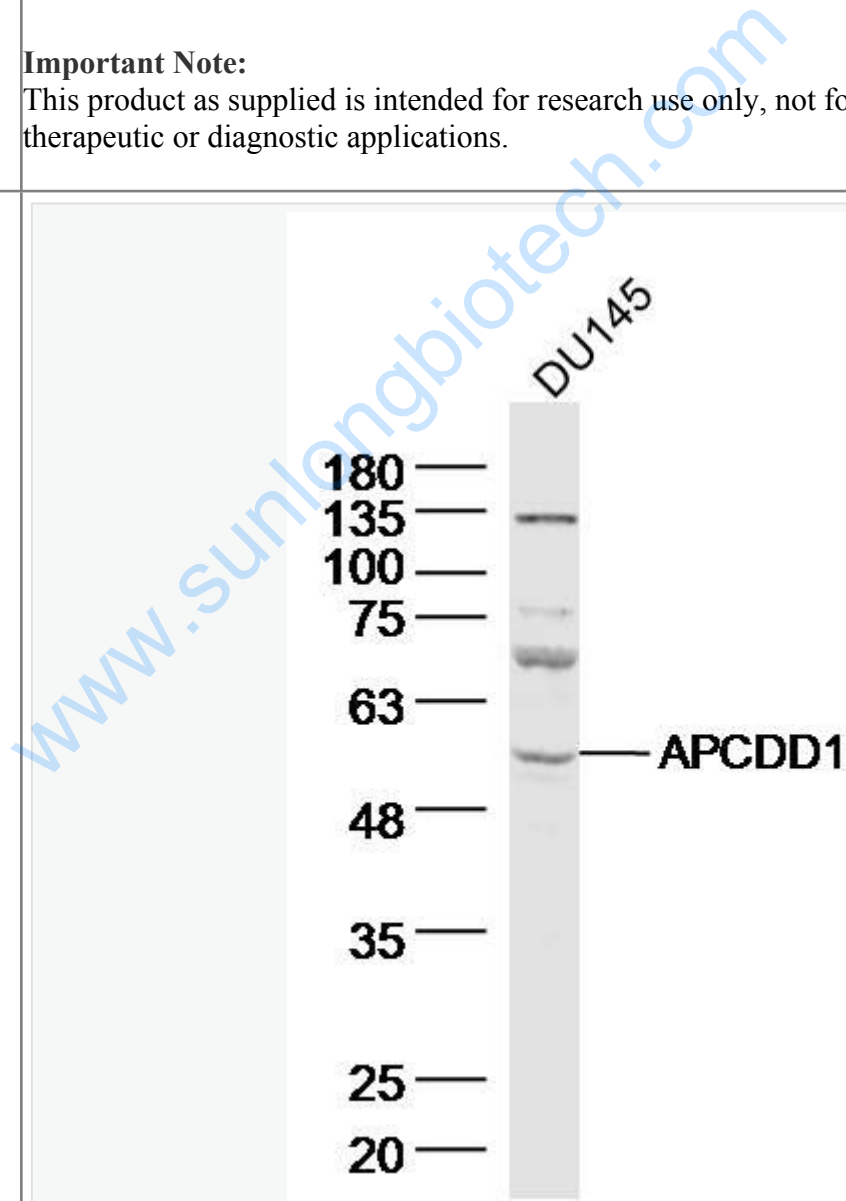
[Unigene: 293274](#)Human

[Unigene: 391102](#)Mouse

Important Note:

This product as supplied is intended for research use only, not for use in human, therapeutic or diagnostic applications.

Picture:



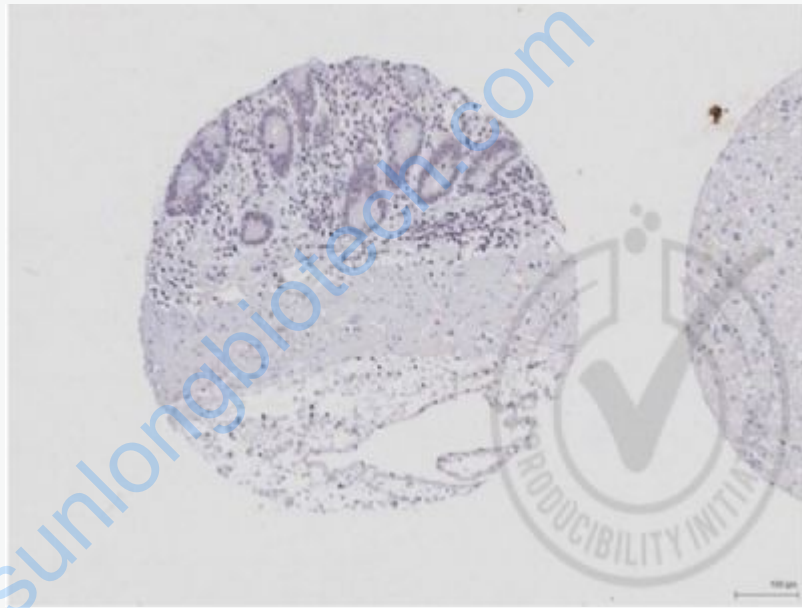
Sample: DU145 Cell (Human) Lysate at 40 ug

Primary: Anti-APCDD1 (SL1565R) at 1/300 dilution

Secondary: IRDye800CW Goat Anti-Rabbit IgG at 1/20000 dilution

Predicted band size: 56 kD

Observed band size: 56 kD



Images provided the Independent Validation Program (badge number 029637) Formalin-fixed and paraffin embedded human stomach labeled with Rabbit Anti-APCDD1 Polyclonal Antibody (SL1565R) at 1:250 room temperature overnight followed by conjugation to secondary antibody.