



Rabbit Anti-APOH antibody

SL1570R

Product Name:	APOH
Chinese Name:	载LipoproteinH抗体
Alias:	Apolipoprotein H; Activated protein C binding protein; APC inhibitor; APOH; B2G1; beta 2 glycoprotein I; beta 2 glycoprotein I precursor; BG; OTTMUSP00000003033; APOH HUMAN.
Organism Species:	Rabbit
Clonality:	Polyclonal
React Species:	Human,Mouse,Rat,Dog,Cow,Horse,Rabbit,
Applications:	WB=1:500-2000ELISA=1:500-1000IHC-P=1:400-800IHC-F=1:400-800IF=1:100-500 (Paraffin sections need antigen repair) not yet tested in other applications. optimal dilutions/concentrations should be determined by the end user.
Molecular weight:	36kDa
Cellular localization:	Secretory protein
Form:	Lyophilized or Liquid
Concentration:	1mg/ml
immunogen:	KLH conjugated synthetic peptide derived from human ApoH:281-345/345
Lsotype:	IgG
Purification:	affinity purified by Protein A
Storage Buffer:	0.01M TBS(pH7.4) with 1% BSA, 0.03% Proclin300 and 50% Glycerol.
Storage:	Store at -20 °C for one year. Avoid repeated freeze/thaw cycles. The lyophilized antibody is stable at room temperature for at least one month and for greater than a year when kept at -20°C. When reconstituted in sterile pH 7.4 0.01M PBS or diluent of antibody the antibody is stable for at least two weeks at 2-4 °C.
PubMed:	PubMed
Product Detail:	Apolipoprotein H is expressed by placental trophoblast cells at high levels. Although the normal physiological role is not known, the protein appears to act as a co-factor for the binding of autoantibodies to phospholipids to trophoblasts, which is a process involved in the pathogenesis of recurrent miscarriage.

Function:

Binds to various kinds of negatively charged substances such as heparin, phospholipids, and dextran sulfate. May prevent activation of the intrinsic blood coagulation cascade by binding to phospholipids on the surface of damaged cells.

Subcellular Location:

Secreted.

Tissue Specificity:

Expressed by the liver and secreted in plasma.

Post-translational modifications:

N- and O-glycosylated. PubMed:6587378 also reports glycosylation on 'Asn-188' for their allele.

Similarity:

Contains 4 Sushi (CCP/SCR) domains.

SWISS:

P02749

Gene ID:

350

Database links:

[Entrez Gene: 350](#)Human

[Entrez Gene: 287774](#)Rat

[Omim: 138700](#)Human

[SwissProt: P02749](#)Human

[SwissProt: P26644](#)Rat

[Unigene: 445358](#)Human

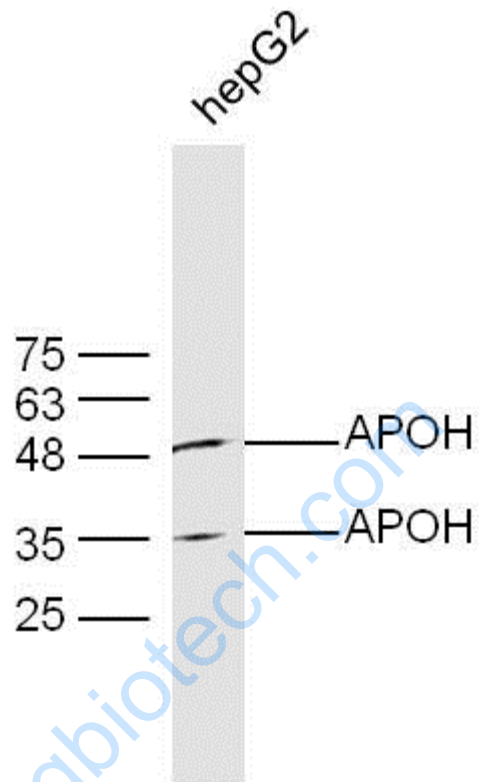
[Unigene: 1824](#)Rat

Important Note:

This product as supplied is intended for research use only, not for use in human, therapeutic or diagnostic applications.

载LipoproteinH(apolipoprotein D, apoH)又称为 β 2glycoprotein I (β 2-glycoprotein, β 2-GI), 是最初是在人血浆的高密度Lipoprotein中被分离出来的。apoH在结构上与其他类型的载Lipoprotein存在很大的差异,被归入脂肪促成素家族。

Picture:



Sample:

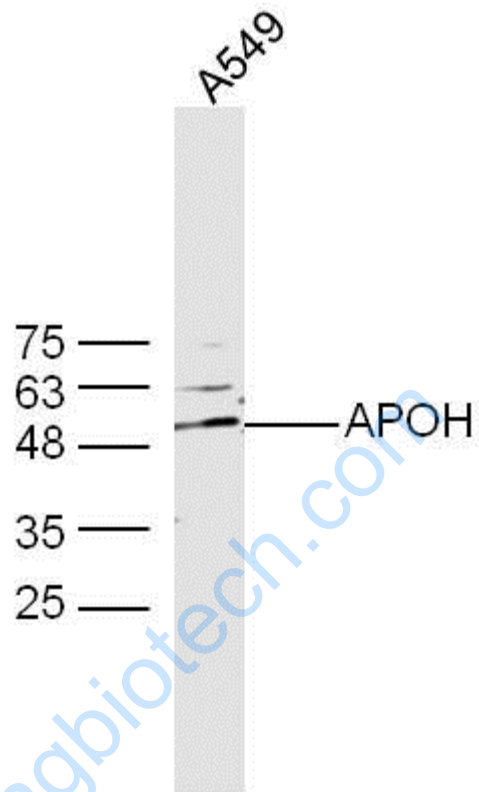
HepG2 Cell (Human) Lysate at 30 ug

Primary: Anti-APOH (SL1570R) at 1/300 dilution

Secondary: IRDye800CW Goat Anti-Rabbit IgG at 1/20000 dilution

Predicted band size: 36 kD

Observed band size: 35/50 kD



Sample:

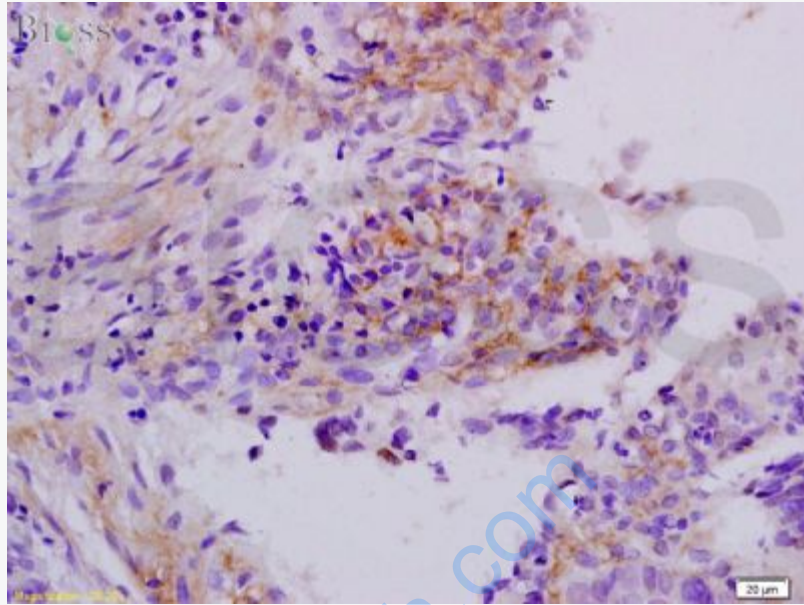
A549 Cell (Human) Lysate at 30 ug

Primary: Anti-APOH (SL1570R) at 1/300 dilution

Secondary: IRDye800CW Goat Anti-Rabbit IgG at 1/20000 dilution

Predicted band size: 36 kD

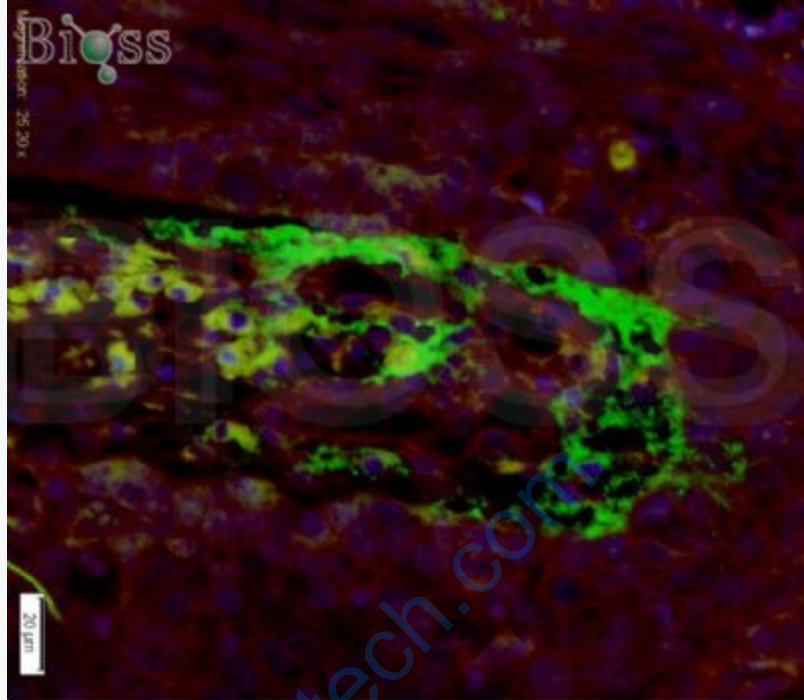
Observed band size: 35/50 kD



Tissue/cell: human laryngeal cancer; 4% Paraformaldehyde-fixed and paraffin-embedded;

Antigen retrieval: citrate buffer (0.01M, pH 6.0), Boiling bathing for 15min; Block endogenous peroxidase by 3% Hydrogen peroxide for 30min; Blocking buffer (normal goat serum,C-0005) at 37°C for 20 min;

Incubation: Anti-APOH Polyclonal Antibody, Unconjugated(SL1570R) 1:200, overnight at 4°C, followed by conjugation to the secondary antibody(SP-0023) and DAB(C-0010) staining



bs-1570R-Anti-APOH

Rabbit Anti-APOH polyclonal antibody, unconjugated (bs-1570R) at 1:200 staining human Laryngeal cancer tissue. The tissue were Formalin-fixed and paraffin-embedded and blocked with goat serum for 20 minutes before incubation with the primary antibody for 20 hours at 4°C. The secondary antibody (green) was Goat Anti-Rabbit IgG, AF488 conjugated (bs-0295G-AF488) used at 1:200 dilution for 40 minutes at 37°C. Nucleus was stained by DAPI(blue).

www.sunlong-tech.com