




## Rabbit Anti-F-Actin antibody

SL1571R

<b>Product Name:</b>	F-Actin
<b>Chinese Name:</b>	纤维状肌动蛋白抗体
<b>Alias:</b>	f actin; Filamentous actin; F-actin capping protein alpha subunit; CapZ alpha-1; CAZA1_HUMAN; CAPZA1.
<b>文献引用</b> 	<p><b>Specific References(14)</b> SL1571R has been referenced in 14 publications.</p> <p><b>[IF=3.73]</b>Su, Bao, et al. "In Vitro and In Vivo Evaluations of Nano-Hydroxyapatite/Polyamide 66/Glass Fibre (n-HA/PA66/GF) as a Novel Bioactive Bone Screw." PLOS ONE 8.7 (2013): e68342.<b>Mouse</b>. <a href="#">PubMed:23861888</a></p> <p><b>[IF=3.73]</b>Zhong, Weiliang, et al. "Regulation of Fibrochondrogenesis of Mesenchymal Stem Cells in an Integrated Microfluidic Platform Embedded with Biomimetic Nanofibrous Scaffolds." PLOS ONE 8.4 (2013): e61283.<b>Rat</b>. <a href="#">PubMed:23637803</a></p> <p><b>[IF=3.22]</b>Zhong, Weiliang, et al. "An integrated microfluidic device for characterizing chondrocyte metabolism in response to distinct levels of fluid flow stimulus."Microfluidics and Nanofluidics: 1-11. <a href="#">PubMed:N/A</a></p> <p><b>[IF=2.80]</b>Kang, Hongyan, et al. "A Potential Gravity-Sensing Role of Vascular Smooth Muscle Cell Glycocalyx in Altered Gravitational Stimulation." Astrobiology (2013).<b>WB;Rat</b>. <a href="#">PubMed:23848471</a></p> <p><b>[IF=2.55]</b>Zhao, Ran, et al. "Hepatoma cell line HepG2. 2.15 demonstrates distinct</p>

biological features compared with parental HepG2." World journal of gastroenterology: WJG 17.9 (2011): 1152.**WB;Human.**

[PubMed:21448419](#)

**[IF=0.86]**Xie, Chaoming, Xiong Lu, and Kefeng Wang. "Pulse Electrochemical Synthesis of Spherical Hydroxyapatite and Silver Nanoparticles Mediated by the Polymerization of Polypyrrole on Metallic Implants for Biomedical Applications." Particle & Particle Systems Characterization (2015).**Rat.**

[PubMed:not posted yet](#)

**[IF=19.68]**Yuan, Lin, et al. "Deubiquitylase OTUD3 regulates PTEN stability and suppresses tumorigenesis." Nature Cell Biology (2015).**IHC-P;Mouse.**

[PubMed:26280536](#)

**[IF=0.00]**Deguchi, Takahiro. "Development of 3D super-resolution tomographic STED microscopy and its application to studies on bone resorption." (2015).**other;**

[PubMed:000](#)

**[IF=2.52]**Chen, S. M., et al. "Cofilin is correlated with sperm quality and influences sperm fertilizing capacity in humans." Andrology (2016).**WB;Human.**

[PubMed:27369112](#)

**[IF=1.86]**Siar, Chong Huat, et al. "Invadopodia proteins, cortactin, N-WASP and WIP differentially promote local invasiveness in ameloblastoma." Journal of Oral Pathology & Medicine (2016).**IHC-P;Human.**

[PubMed:26752341](#)

**[IF=0.18]**Du, Ailin, et al. "Damage of hippocampal neurons in rats with chronic alcoholism." Neural regeneration research 9.17 (2014): 1610.**IHC-P;Rat.**

[PubMed:25368648](#)

**[IF=1.84]**Zhang, Pengfei, et al. "Proteome analysis of egg yolk after exposure to zinc oxide nanoparticles." Theriogenology (2017).**WB;Chicken.**

[PubMed:28460670](#)

**[IF=2.22]**Li, Haihong, et al. "Human eccrine sweat gland cells reconstitute polarized spheroids when subcutaneously implanted with Matrigel in nude mice." Journal of molecular histology 47.5 (2016): 485-490.**IHC-P;Mouse.**

[PubMed:27492422](#)

**[IF=1.69]**Guo, Xiliang, and Xuezheng Liu. "Nogo receptor knockdown and ciliary

	<p>neurotrophic factor attenuate diabetic retinopathy in streptozotocin-induced diabetic rats." Molecular Medicine Reports. (2017).IHC-P;Rat.</p> <p style="text-align: right;"><a href="#">PubMed:28656312</a></p>
<b>Organism Species:</b>	Rabbit
<b>Clonality:</b>	Polyclonal
<b>React Species:</b>	Human,Mouse,Rat,Pig,Cow,Sheep,
<b>Applications:</b>	WB=1:1000-5000ELISA=1:500-1000Flow-Cyt=3µg /test not yet tested in other applications. optimal dilutions/concentrations should be determined by the end user.
<b>Molecular weight:</b>	42kDa
<b>Cellular localization:</b>	cytoplasmic
<b>Form:</b>	Lyophilized or Liquid
<b>Concentration:</b>	1mg/ml
<b>immunogen:</b>	KLH conjugated synthetic peptide derived from human F-actin capping protein alpha subunit:1-50/374
<b>Lsotype:</b>	IgG
<b>Purification:</b>	affinity purified by Protein A
<b>Storage Buffer:</b>	0.01M TBS(pH7.4) with 1% BSA, 0.03% Proclin300 and 50% Glycerol.
<b>Storage:</b>	Store at -20 °C for one year. Avoid repeated freeze/thaw cycles. The lyophilized antibody is stable at room temperature for at least one month and for greater than a year when kept at -20°C. When reconstituted in sterile pH 7.4 0.01M PBS or diluent of antibody the antibody is stable for at least two weeks at 2-4 °C.
<b>PubMed:</b>	<a href="#">PubMed</a>
<b>Product Detail:</b>	<p>In vertebrates, three main groups of actin isoforms, alpha, beta, and gamma have been identified. The alpha actins, found in muscle tissues, are a major constituent of the contractile apparatus. The beta and gamma actins coexist in most cell types as components of the cytoskeleton, and as mediators of internal cell motility. Individual subunits of microfilaments are known as globular actin (G-actin). G-actin subunits assemble into long filamentous polymers called F-actin.</p> <p><b>SWISS:</b> P60709</p> <p><b>Gene ID:</b> 60</p> <p><b>Database links:</b></p> <p><a href="#">Entrez Gene: 60</a>Human</p> <p><a href="#">Entrez Gene: 11461</a>Mouse</p> <p><a href="#">Entrez Gene: 100009272</a>Rabbit</p> <p><a href="#">Entrez Gene: 81822</a>Rat</p>

[Omim: 102630](#)Human

[SwissProt: P60709](#)Human

[SwissProt: P60710](#)Mouse

[SwissProt: P29751](#)Rabbit

[SwissProt: P60711](#)Rat

[Unigene: 520640](#)Human

[Unigene: 708120](#)Human

[Unigene: 727576](#)Human

[Unigene: 328431](#)Mouse

[Unigene: 391967](#)Mouse

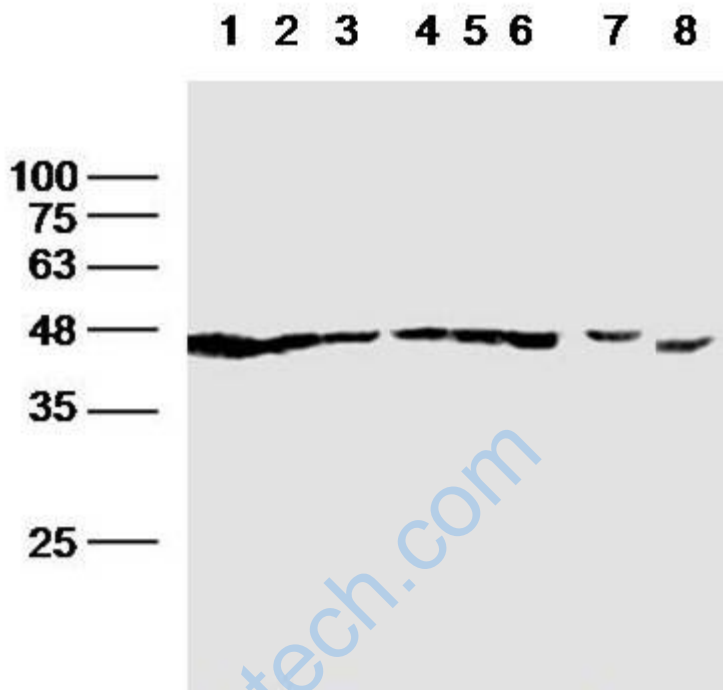
[Unigene: 94978](#)Rat

**Important Note:**

This product as supplied is intended for research use only, not for use in human, therapeutic or diagnostic applications.

纤维状肌动蛋白F-

Actin主要存在于横纹肌原肌纤维细丝及平滑肌中, 是肌肉运动和细胞运动的重要蛋白。



Sample: Lane1:Hela (Human) Whole Cell Lysate at 30 ug

Lane2:Jurkat (Human) Whole Cell Lysate at 30 ug

Lane3:293T (Human) Whole Cell Lysate at 30 ug

Lane4:Hepg2 (Human) Whole Cell Lysate at 30 ug

Lane5:A431 (Human) Whole Cell Lysate at 30 ug

Lane6:A549 (Human) Whole Cell Lysate at 30 ug

Lane7:H9C2 (Rat) Whole Cell Lysate at 30 ug

Lane8:Testis (Mouse) Tissue Lysate at 30 ug

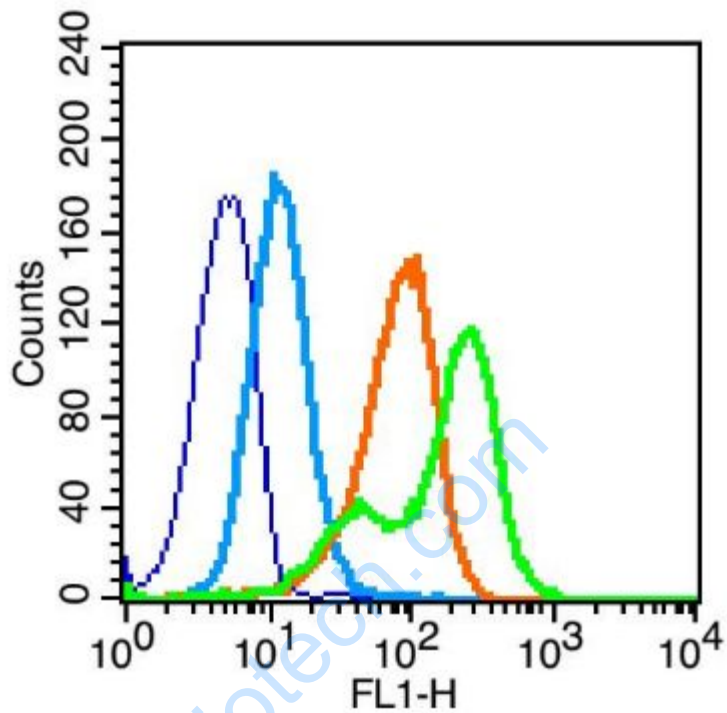
Primary: Anti-F-Actin(SL1571R)at 1/300 dilution

Secondary: IRDye800CW Goat Anti-Rabbit IgG at 1/20000 dilution

Predicted band size: 42 kD

Observed band size: 42 kD

**Picture:**



Blank control (blue line): HeLa (blue).

Primary Antibody (green line): Rabbit Anti- F-Actin antibody (SL1571R)

Dilution:  $3\mu\text{g} / 10^6$  cells;

Isotype Control Antibody (orange line): Rabbit IgG .

Secondary Antibody (white blue line): Goat anti-rabbit IgG-PE

Dilution:  $1\mu\text{g} / \text{test}$ .

Protocol

The cells were fixed with 80% methanol (5 min at  $-20^{\circ}\text{C}$ ) and then permeabilized with 0.1% PBS-Tween for 20 min at room temperature . Cells stained with Primary Antibody for 30 min at room temperature. The cells were then incubated in 1 X PBS/2%BSA/10% goat serum to block non-specific protein-protein interactions followed by the antibody for 15 min at room temperature. The secondary antibody

	used for 40 min at room temperature. Acquisition of 20,000 events was performed.
--	--

[www.sunlongbiotech.com](http://www.sunlongbiotech.com)