



Rabbit Anti-Interferon alpha/IFNA13 antibody

SL1578R

Product Name:	Interferon alpha/IFNA13
Chinese Name:	Interferon α 抗体
Alias:	IFL; IFN alpha; IFN-Alpha; IFN; IFNA; IFNA1; IFNA13; Interferon alpha 1; Interferon alpha 1/13; Interferon alpha 13; Interferon alpha D; Interferon alpha; Interferon alpha leukocyte; Interferon leukocyte; LeIF D; MGC138207; MGC138505; MGC138507; IFNA1 interferon, alpha 1; IFNA8_HUMAN; IFNA1_HUMAN; Interferon alpha-8; IFN-alpha-8; Interferon alpha-B; LeIF B; Interferon alpha-B2.
Organism Species:	Rabbit
Clonality:	Polyclonal
React Species:	Human,
Applications:	WB=1:500-2000ELISA=1:500-1000IHC-P=1:400-800IHC-F=1:400-800IF=1:100-500 (Paraffin sections need antigen repair) not yet tested in other applications. optimal dilutions/concentrations should be determined by the end user.
Molecular weight:	21kDa
Cellular localization:	Secretory protein
Form:	Lyophilized or Liquid
Concentration:	1mg/ml
immunogen:	KLH conjugated synthetic peptide derived from human IFN-Alpha:161-189/189
Lsotype:	IgG
Purification:	affinity purified by Protein A
Storage Buffer:	0.01M TBS(pH7.4) with 1% BSA, 0.03% Proclin300 and 50% Glycerol.
Storage:	Store at -20 °C for one year. Avoid repeated freeze/thaw cycles. The lyophilized antibody is stable at room temperature for at least one month and for greater than a year when kept at -20°C. When reconstituted in sterile pH 7.4 0.01M PBS or diluent of antibody the antibody is stable for at least two weeks at 2-4 °C.
PubMed:	PubMed
Product Detail:	The protein encoded by this gene is produced by macrophages and has antiviral activity. This gene is intronless and the encoded protein is secreted. [provided by RefSeq, Sep 2011]

The type I interferons consist of 14 different alpha isoforms (subtypes with slightly different specificities), and single beta, omega, epsilon and kappa isoforms. Homologous molecules are found in many species, including rats and mice (and most mammals), and have been identified in birds, reptiles and fish species. Interferon alpha is produced primarily by plasmacytoid dendritic cells and is a potent component of the anti viral innate immune response; it modulates adaptive immunity.

Function:

Produced by macrophages, IFN-alpha have antiviral activities. Interferon stimulates the production of two enzymes: a protein kinase and an oligoadenylate synthetase.

Subcellular Location:

Secreted.

Similarity:

Belongs to the alpha/beta interferon family.

SWISS:

P01562

Gene ID:

3439

Database links:

[Entrez Gene: 3439](#)Human

[Entrez Gene: 3447](#)Human

[Omin: 147660](#)Human

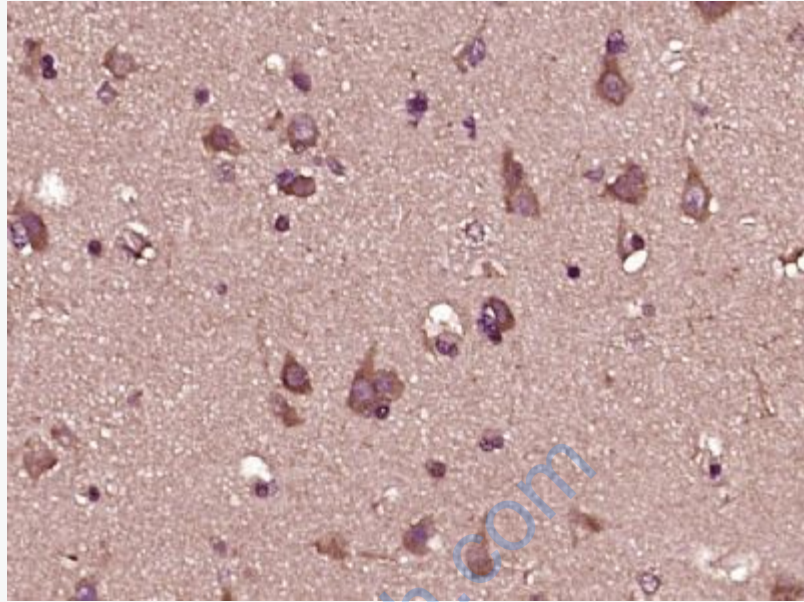
[SwissProt: P01562](#)Human

[Unigene: 37026](#)Human

[Unigene: 533471](#)Human

Important Note:

This product as supplied is intended for research use only, not for use in human, therapeutic or diagnostic applications.



Picture:

Paraformaldehyde-fixed, paraffin embedded (human brain glioma); Antigen retrieval by boiling in sodium citrate buffer (pH6.0) for 15min; Block endogenous peroxidase by 3% hydrogen peroxide for 20 minutes; Blocking buffer (normal goat serum) at 37°C for 30min; Antibody incubation with (IFNA13) Polyclonal Antibody, Unconjugated (SL1578R) at 1:400 overnight at 4°C, followed by operating according to SP Kit(Rabbit) (sp-0023) instructions and DAB staining.