

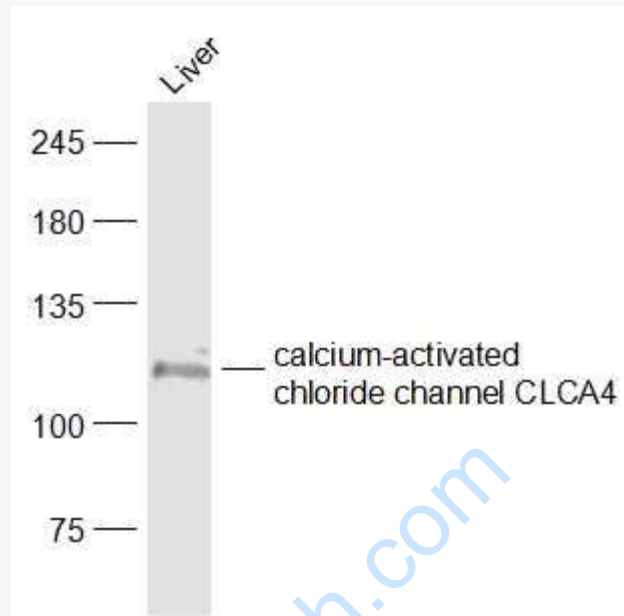


Rabbit Anti-calcium-activated chloride channel CLCA4 antibody

SL1585R

Product Name:	calcium-activated chloride channel CLCA4
Chinese Name:	氯化钙通道活性的4抗体
Alias:	Clca3b; Clca4; Clca3b chloride channel calcium activated 3B; chloride channel calcium activated 3B precursor; chloride channel calcium activated 4.
Organism Species:	Rabbit
Clonality:	Polyclonal
React Species:	Mouse,Rat,
Applications:	WB=1:500-2000ELISA=1:500-1000 not yet tested in other applications. optimal dilutions/concentrations should be determined by the end user.
Molecular weight:	110kDa
Cellular localization:	The cell membraneSecretory protein
Form:	Lyophilized or Liquid
Concentration:	1mg/ml
immunogen:	KLH conjugated synthetic peptide derived from mouse chloride channel calcium activated 3B precursor:651-750/1044
Lsotype:	IgG
Purification:	affinity purified by Protein A
Storage Buffer:	0.01M TBS(pH7.4) with 1% BSA, 0.03% Proclin300 and 50% Glycerol.
Storage:	Store at -20 °C for one year. Avoid repeated freeze/thaw cycles. The lyophilized antibody is stable at room temperature for at least one month and for greater than a year when kept at -20°C. When reconstituted in sterile pH 7.4 0.01M PBS or diluent of antibody the antibody is stable for at least two weeks at 2-4 °C.
PubMed:	PubMed
Product Detail:	

Picture:



Sample:

Liver (Mouse) Lysate at 40 ug

Primary: Anti-calcium-activated chloride channel CLCA4 (SL1585R) at 1/500 dilution

Secondary: IRDye800CW Goat Anti-Rabbit IgG at 1/20000 dilution

Predicted band size: 110 kD

Observed band size: 110 kD