



Rabbit Anti-CK20 antibody

SL1588R

Product Name:	CK20
Chinese Name:	细胞角蛋白20抗体
Alias:	Cytokeratin 20; CK 20; CK20; Cytokeratin20; K20; Keratin 20; Keratin type I cytoskeletal 20; Keratin20; KRT 20; KRT 21; KRT20; KRT21; MGC35423; Protein IT; K1C20_HUMAN.
Organism Species:	Rabbit
Clonality:	Polyclonal
React Species:	Human,Mouse,Rat,
Applications:	WB=1:500-2000ELISA=1:500-1000IHC-P=1:400-800IHC-F=1:400-800IF=1:100-500 (Paraffin sections need antigen repair) not yet tested in other applications. optimal dilutions/concentrations should be determined by the end user.
Molecular weight:	48kDa
Cellular localization:	cytoplasmic
Form:	Lyophilized or Liquid
Concentration:	1mg/ml
immunogen:	KLH conjugated synthetic peptide derived from human CK20:151-250/424
Lsotype:	IgG
Purification:	affinity purified by Protein A
Storage Buffer:	0.01M TBS(pH7.4) with 1% BSA, 0.03% Proclin300 and 50% Glycerol.
Storage:	Store at -20 °C for one year. Avoid repeated freeze/thaw cycles. The lyophilized antibody is stable at room temperature for at least one month and for greater than a year when kept at -20°C. When reconstituted in sterile pH 7.4 0.01M PBS or diluent of antibody the antibody is stable for at least two weeks at 2-4 °C.
PubMed:	PubMed
Product Detail:	Cytokeratin 20 is a type I keratin which is primarily expressed in gastric and intestinal epithelium, urothelium, and Merkel-cells. The keratins are intermediate filament proteins responsible for the structural integrity of epithelial cells and are subdivided into cytokeratins and hair keratins. The type I cytokeratins consist of acidic proteins which are arranged in pairs of heterotypic keratin chains. Their genes are clustered in a region

of chromosome 17q12-q21. Cytokeratin 20 is a major cellular protein of mature enterocytes and goblet cells and is specifically expressed in the gastric and intestinal mucosa. It is also expressed in adenocarcinomas of the colon, stomach, pancreas and the bile system and is present in mucinous ovarian tumors, transitional-cell and Merkel-cell carcinomas. Notably, the squamous cell carcinomas and adenocarcinomas of the breast, lung, and endometrium, non-mucinous tumors of the ovary, and small cell carcinomas lack cytokeratin 20.

Function:

Plays a significant role in maintaining keratin filament organization in intestinal epithelia. When phosphorylated, plays a role in the secretion of mucin in the small intestine (By similarity).

Subunit:

Heterotetramer of two type I and two type II keratins. Associates with KRT8.

Subcellular Location:

Cytoplasm.

Tissue Specificity:

Expressed predominantly in the intestinal epithelium. Expressed in luminal cells of colonic mucosa. Also expressed in the Merkel cells of keratinized oral mucosa; specifically at the tips of some rete ridges of the gingival mucosa, in the basal layer of the palatal mucosa and in the taste buds of lingual mucosa.

Post-translational modifications:

Hyperphosphorylation at Ser-13 occurs during the early stages of apoptosis but becomes less prominent during the later stages. Phosphorylation at Ser-13 also increases in response to stress brought on by cell injury (By similarity). Proteolytically cleaved by caspases during apoptosis. Cleavage occurs at Asp-228.

Similarity:

Belongs to the intermediate filament family.

SWISS:

P35900

Gene ID:

54474

Database links:

[Entrez Gene: 54474](#)Human

[Entrez Gene: 66809](#)Mouse

[Entrez Gene: 286912](#)Rat

[Omim: 608218](#)Human

[SwissProt: P35900](#)Human

[SwissProt: Q9D312](#)Mouse

[SwissProt: P25030](#)Rat

[Unigene: 84905](#)Human

[Unigene: 28042](#)Mouse

[Unigene: 9887](#)Rat

Important Note:

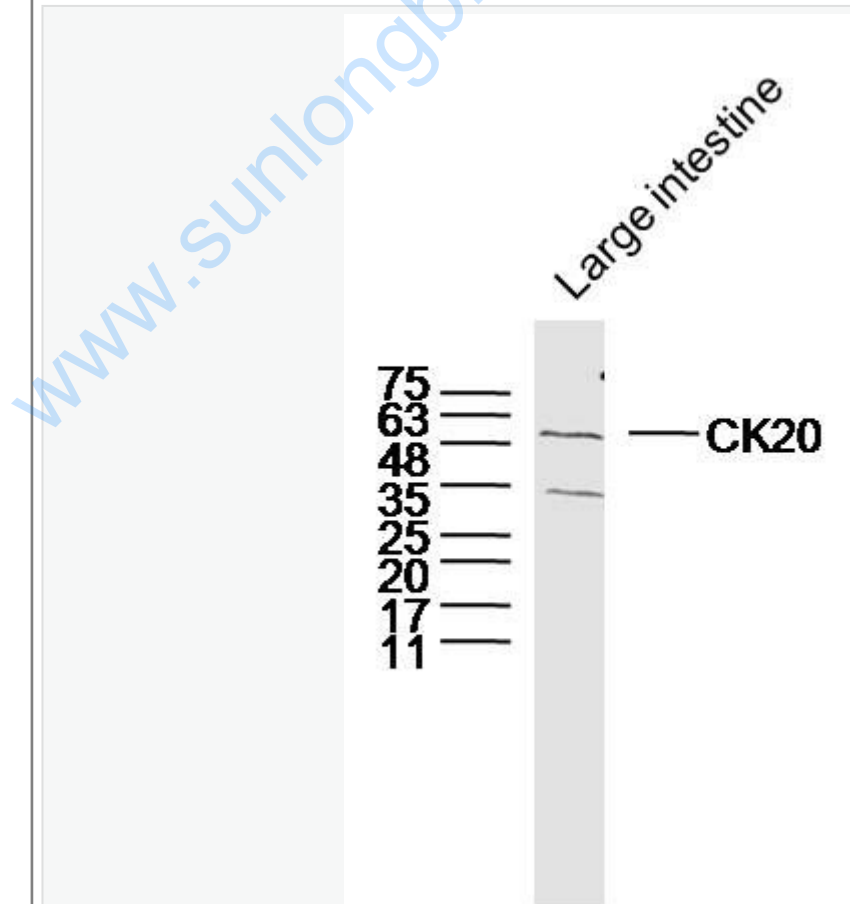
This product as supplied is intended for research use only, not for use in human, therapeutic or diagnostic applications.

结构蛋白 (Structural Proteins)

CK-20细胞角蛋白-

20主要用于Tumour方面的研究, 近年来大多用于消化系统恶性Tumour的鉴别, 主要在胞浆。

Picture:



Sample:

Large intestine (Mouse) Lysate at 40 ug

Primary: Anti-CK20 (SL1588R) at 1/300 dilution

Secondary: IRDye800CW Goat Anti-Rabbit IgG at 1/20000 dilution

Predicted band size: 48 kD

Observed band size: 48 kD

www.sunlongbiotech.com