



Rabbit Anti-Cathepsin G antibody

SL1598R

Product Name:	Cathepsin G
Chinese Name:	组织蛋白酶G抗体
Alias:	CTSG; Cathepsin G; CG; Cathepsin G precursor; CathepsinG; CTSG; CTSG protein; MGC23078; CATG_HUMAN.
Organism Species:	Rabbit
Clonality:	Polyclonal
React Species:	Human,Mouse,Rat,Dog,Cow,Horse,Rabbit,Sheep,
Applications:	WB=1:500-2000ELISA=1:500-1000IHC-P=1:400-800IHC-F=1:400-800Flow-Cyt=0.2ug/testIF=1:100-500 (Paraffin sections need antigen repair) not yet tested in other applications. optimal dilutions/concentrations should be determined by the end user.
Molecular weight:	28kDa
Cellular localization:	The nucleusThe cell membrane
Form:	Lyophilized or Liquid
Concentration:	1mg/ml
immunogen:	KLH conjugated synthetic peptide derived from human CTSG:41-120/255
Lsotype:	IgG
Purification:	affinity purified by Protein A
Storage Buffer:	0.01M TBS(pH7.4) with 1% BSA, 0.03% Proclin300 and 50% Glycerol.
Storage:	Store at -20 °C for one year. Avoid repeated freeze/thaw cycles. The lyophilized antibody is stable at room temperature for at least one month and for greater than a year when kept at -20°C. When reconstituted in sterile pH 7.4 0.01M PBS or diluent of antibody the antibody is stable for at least two weeks at 2-4 °C.
PubMed:	PubMed
Product Detail:	Cathepsin G is a serine protease, it consisting of a single polypeptide with a molecular weight of 30 kDa as determined by SDS-PAGE. Its substrates are collagen and proteoglycans. Poor regulation of Cathepsin G levels has been associated with various connective tissue disorders, for example pulmonary emphysema and cystic fibrosis. Function:

Serine protease with trypsin- and chymotrypsin-like specificity. Cleaves complement C3. Has antibacterial activity against the Gram-negative bacterium *P.aeruginosa*, antibacterial activity is inhibited by LPS from *P.aeruginosa*, Z-Gly-Leu-Phe-CH₂Cl and phenylmethylsulfonyl fluoride.

Subcellular Location:

Cell surface.

Similarity:

Belongs to the peptidase S1 family.

Contains 1 peptidase S1 domain.

SWISS:

P08311

Gene ID:

1511

Database links:

[Entrez Gene: 1511](#)Human

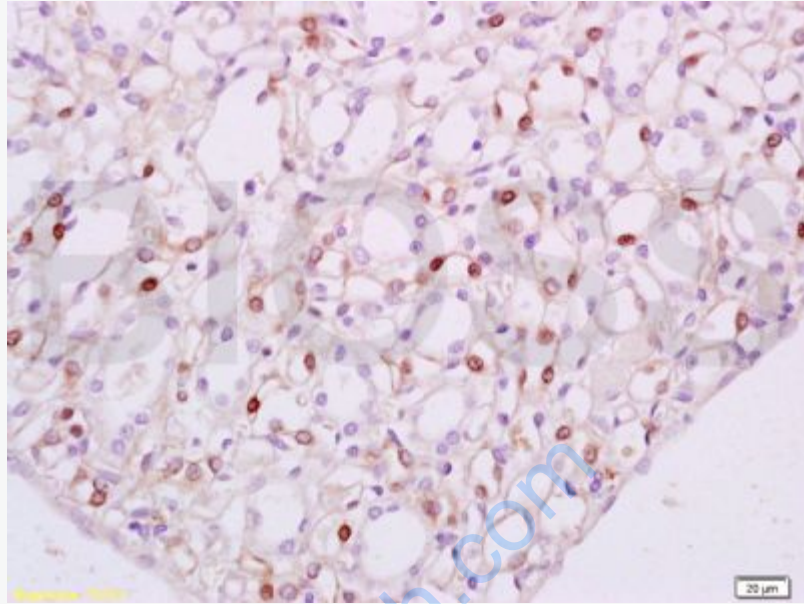
[Omin: 116830](#)Human

[SwissProt: P08311](#)Human

[Unigene: 421724](#)Human

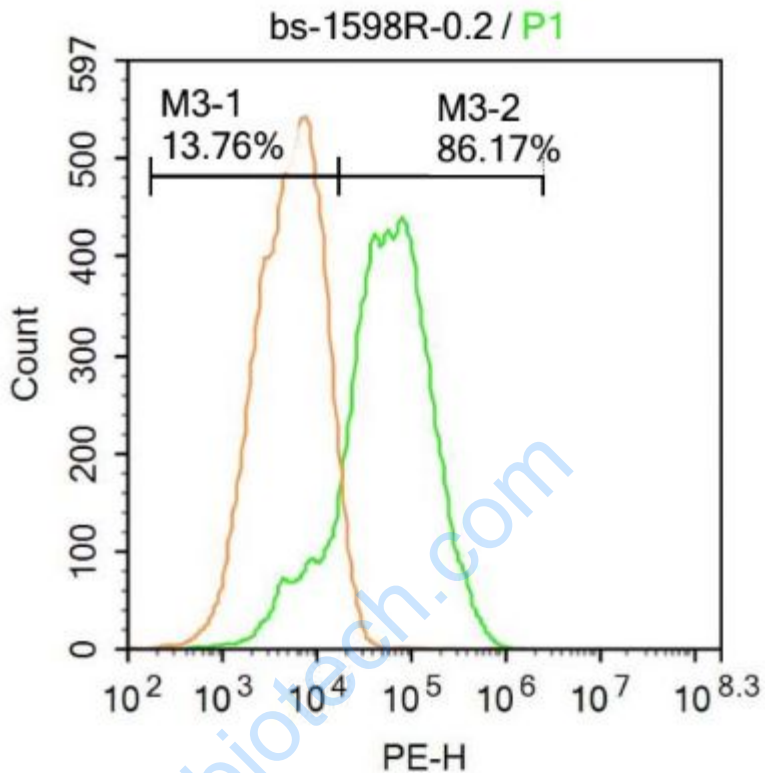
Important Note:

This product as supplied is intended for research use only, not for use in human, therapeutic or diagnostic applications.



Picture:

Tissue/cell: rat kidney tissue; 4% Paraformaldehyde-fixed and paraffin-embedded;
Antigen retrieval: citrate buffer (0.01M, pH 6.0), Boiling bathing for 15min; Block endogenous peroxidase by 3% Hydrogen peroxide for 30min; Blocking buffer (normal goat serum,C-0005) at 37°C for 20 min;
Incubation: Anti-Cathepsin G Polyclonal Antibody, Unconjugated(SL1598R) 1:100, overnight at 4°C, followed by conjugation to the secondary antibody(SP-0023) and DAB(C-0010) staining



U-937 cells were fixed with 4% PFA for 10min at room temperature, permeabilized with 90% ice-cold methanol for 20 min at room temperature, and incubated in 5% BSA blocking buffer for 30 min at room temperature. Cells were then stained with Cathepsin G Antibody (SL1598R) at 1:500 dilution in blocking buffer and incubated for 30 min at room temperature, washed twice with 2% BSA in PBS, followed by secondary antibody incubation for 40 min at room temperature. Acquisitions of 20,000 events were performed. Cells stained with primary antibody (green), and isotype control (orange).