



Rabbit Anti-ABCB5 antibody

SL1604R

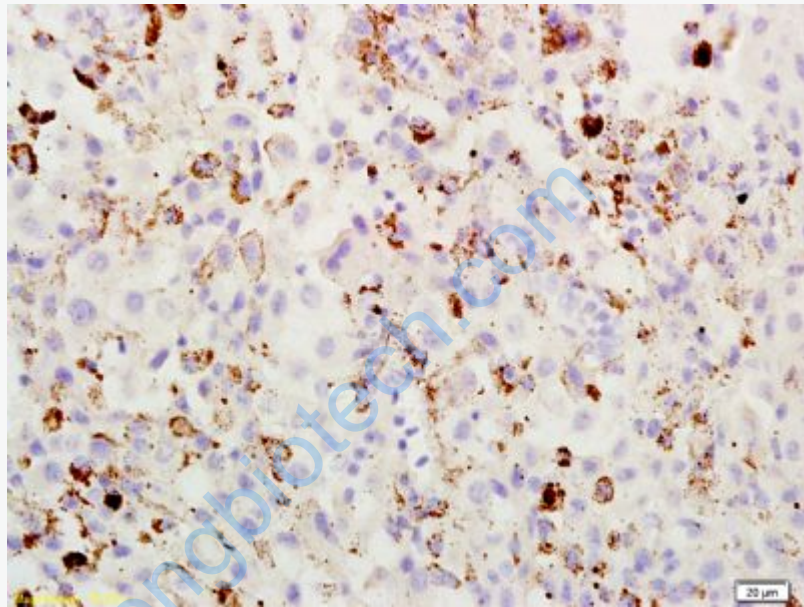
| | |
|--------------------------------|--|
| Product Name: | ABCB5 |
| Chinese Name: | ATPBinding protein家族5抗体 |
| Alias: | ATP-binding cassette sub-family B member 5; ABCB 5; ABCB5alpha; ABCB5beta; ATP binding cassette sub family B (MDR/TAP) member 5; ATP binding cassette sub family B member 5; EST422562; P glycoprotein ABCB5; ABCB5_HUMAN. |
| 文献引用 PubMed : | <p>Specific References(2) SL1604R has been referenced in 2 publications.</p> <p>[IF=4.77]Kaushik, Gaurav, et al. "Honokiol inhibits melanoma stem cells by targeting notch signaling." Molecular carcinogenesis (2014).WB;Human.</p> <p>PubMed:25491779</p> <p>[IF=0.00]Hardt, Olaf, et al. "SSEA4 AND ST3GAL2 AS CHEMOTHERAPEUTIC DRUG RESPONSE BIOMARKERS." U.S. Patent No. 20,150,316,556. 5 Nov. 2015.FCM;Mouse.</p> <p>PubMed:1111</p> |
| Organism Species: | Rabbit |
| Clonality: | Polyclonal |
| React Species: | Human,Mouse,Rat,Dog,Cow,Horse, |
| Applications: | ELISA=1:500-1000IHC-P=1:400-800IHC-F=1:400-800IF=1:100-500 (Paraffin sections need antigen repair) not yet tested in other applications. optimal dilutions/concentrations should be determined by the end user. |
| Molecular weight: | 89/138kDa |
| Cellular localization: | The cell membrane |
| Form: | Lyophilized or Liquid |
| Concentration: | 1mg/ml |
| immunogen: | KLH conjugated synthetic peptide derived from human ABCB5:841-883/1257<Cytoplasmic> |

| | |
|------------------------|--|
| Lsotype: | IgG |
| Purification: | affinity purified by Protein A |
| Storage Buffer: | 0.01M TBS(pH7.4) with 1% BSA, 0.03% Proclin300 and 50% Glycerol. |
| Storage: | Store at -20 °C for one year. Avoid repeated freeze/thaw cycles. The lyophilized antibody is stable at room temperature for at least one month and for greater than a year when kept at -20°C. When reconstituted in sterile pH 7.4 0.01M PBS or diluent of antibody the antibody is stable for at least two weeks at 2-4 °C. |
| PubMed: | PubMed |
| Product Detail: | <p>ABCB5 belongs to the ATP-binding cassette (ABC) transporter superfamily of integral membrane proteins. These proteins participate in ATP-dependent transmembrane transport of structurally diverse molecules ranging from small ions, sugars, and peptides to more complex organic molecules (Chen et al., 2005 [PubMed 15760339]).[supplied by OMIM, Mar 2008]</p> <p>Function: Plasma membrane transporter able to mediate efflux from cells of the rhodamine dye and of the therapeutic drug doxorubicin. Responsible for the resistance to doxorubicin of a subset of malignant melanomas.</p> <p>Subcellular Location: Cell membrane; Multi-pass membrane protein.</p> <p>Tissue Specificity: Expressed by CD133-expressing progenitor cells among epidermal melanocytes (at protein level). Widely expressed with specific expression in pigment cells. Also expressed in several malignant tissues.</p> <p>Similarity: Belongs to the ABC transporter superfamily. ABCB family. Multidrug resistance exporter (TC 3.A.1.201) subfamily. Contains 1 ABC transmembrane type-1 domain. Contains 2 ABC transporter domains.</p> <p>SWISS: Q2M3G0</p> <p>Gene ID: 340273</p> <p>Database links: Entrez Gene: 340273Human Oimim: 611785Human SwissProt: Q2M3G0Human</p> |

[Unigene: 404102](#)Human

Important Note:

This product as supplied is intended for research use only, not for use in human, therapeutic or diagnostic applications.



Picture:

Tissue/cell: mouse melanoma tissue; 4% Paraformaldehyde-fixed and paraffin-embedded;

Antigen retrieval: citrate buffer (0.01M, pH 6.0), Boiling bathing for 15min; Block endogenous peroxidase by 3% Hydrogen peroxide for 30min; Blocking buffer (normal goat serum,C-0005) at 37°C for 20 min;

Incubation: Anti-ABCB5 Polyclonal Antibody, Unconjugated(SL1604R) 1:200, overnight at 4°C, followed by conjugation to the secondary antibody(SP-0023) and DAB(C-0010) staining