



Rabbit Anti-FCN3 antibody

SL16062R

Product Name:	FCN3
Chinese Name:	FCN3蛋白抗体
Alias:	Collagen/fibrinogen domain containing lectin 3 p35; Collagen/fibrinogen domain containing protein 3; FCN 3; FCNH; Ficolin (collagen/fibrinogen domain containing) 3 (Hakata antigen); Ficolin (collagen/fibrinogen domain containing) 3; Ficolin 3; H ficolin; HAKA1; Hakata antigen; MGC22543.
Organism Species:	Rabbit
Clonality:	Polyclonal
React Species:	Human,
Applications:	WB=1:500-2000ELISA=1:500-1000 not yet tested in other applications. optimal dilutions/concentrations should be determined by the end user.
Molecular weight:	30kDa
Cellular localization:	cytoplasmic
Form:	Lyophilized or Liquid
Concentration:	1mg/ml
immunogen:	KLH conjugated synthetic peptide derived from human FCN3:21-120/299
Lsotype:	IgG
Purification:	affinity purified by Protein A
Storage Buffer:	0.01M TBS(pH7.4) with 1% BSA, 0.03% Proclin300 and 50% Glycerol.
Storage:	Store at -20 °C for one year. Avoid repeated freeze/thaw cycles. The lyophilized antibody is stable at room temperature for at least one month and for greater than a year when kept at -20°C. When reconstituted in sterile pH 7.4 0.01M PBS or diluent of antibody the antibody is stable for at least two weeks at 2-4 °C.
PubMed:	PubMed
Product Detail:	Ficolins are a group of proteins which consist of a collagen-like domain and a fibrinogen-like domain. In human serum, there are two types of ficolins, both of which have lectin activity. The protein encoded by this gene is a thermolabile beta-2-macroglycoprotein found in all human serum and is a member of the ficolin/opsonin p35 lectin family. The protein, which was initially identified based on its reactivity with

sera from patients with systemic lupus erythematosus, has been shown to have a calcium-independent lectin activity. The protein can activate the complement pathway in association with MASPs and sMAP, thereby aiding in host defense through the activation of the lectin pathway. Alternative splicing occurs at this locus and two variants, each encoding a distinct isoform, have been identified. [provided by RefSeq, Jul 2008]

Function:

FCN3 (Ficolin 3) is involved in the serum exerting lectin activity. In human serum, there are two types of ficolins, both of which have lectin activity. FCN3 is a thermolabile beta 2 macroglycoprotein found in all human serum and is a member of the ficolin/opsonin p35 lectin family. It can activate the complement pathway in association with MASPs and sMAP, thereby aiding in host defense through the activation of the lectin pathway.

Subunit:

Homopolymer; disulfide-linked. May be an octadecamer consisting of an elementary trimer unit. Does not interact with fibronectin, elastin or zymosan. Interacts with MASP1 and MASP2.

Subcellular Location:

Secreted. Note: Found in blood plasma, bronchus, alveolus and bile duct.

Tissue Specificity:

Liver and lung. In liver it is produced by bile duct epithelial cells and hepatocytes. In lung it is produced by both ciliated bronchial epithelial cells and type II alveolar epithelial cells.

Post-translational modifications:

The N-terminus is blocked.

DISEASE:

Ficolin 3 deficiency (FCN3D) [MIM:613860]: A disorder characterized by immunodeficiency, recurrent infections, brain abscesses and recurrent warts on the fingers. Affected individuals have normal levels of lymphocytes, normal T-cell responses, and normal antibodies, but a selective deficient antibody response to pneumococcal polysaccharide vaccine. Note=The disease is caused by mutations affecting the gene represented in this entry.

Similarity:

Belongs to the ficolin lectin family.
Contains 1 collagen-like domain.
Contains 1 fibrinogen C-terminal domain.

SWISS:

O75636

Gene ID:
8547

Database links:

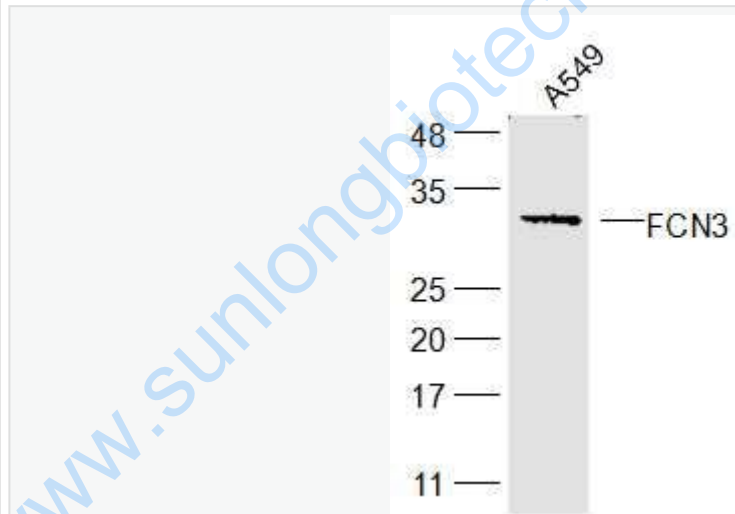
[Entrez Gene: 8547](#) Human

[Omim: 604973](#) Human

[SwissProt: O75636](#) Human

Important Note:

This product as supplied is intended for research use only, not for use in human, therapeutic or diagnostic applications.



Picture:

Sample:

A549(Human) Cell Lysate at 30 ug

Primary: Anti-FCN3 (SL16062R) at 1/300 dilution

Secondary: IRDye800CW Goat Anti-Rabbit IgG at 1/20000 dilution

Predicted band size: 30 kD

Observed band size: 30 kD

