




## Rabbit Anti-CYP1A1 antibody

SL1606R

<b>Product Name:</b>	CYP1A1
<b>Chinese Name:</b>	细胞色素P450 1A1抗体
<b>Alias:</b>	Cytochrome p450 1A1; AHH; AHRR; CP11; CYP1; P1-450; P450-C; P450DX; AHH; AHRR; Aryl hydrocarbon hydroxylase; CYP 1; CYP1A1; CYPIA1; Cytochrome P1-450; Flavoprotein-linked monooxygenase; Microsomal monooxygenase; P1 450; P450 C; P450 form 6; P450 P1; Xenobiotic monooxygenase.
<b>文献引用</b>  :	<b>Specific References(1)</b> SL1606R has been referenced in 1 publications. <b>[IF=2.34]</b> Cedervall, Therése, Pia Monica Lind, and Lars S?vendahl. "Expression of the Aryl Hydrocarbon Receptor in Growth Plate Cartilage and the Impact of Its Local Modulation on Longitudinal Bone Growth." International Journal of Molecular Sciences 16.4 (2015): 8059-8069. <b>IHC-P;Human.</b> <a href="#">PubMed:25867478</a>
<b>Organism Species:</b>	Rabbit
<b>Clonality:</b>	Polyclonal
<b>React Species:</b>	Human,Mouse,Rat,Pig,
<b>Applications:</b>	WB=1:500-2000ELISA=1:500-1000IHC-P=1:400-800IHC-F=1:400-800IF=1:100-500 (Paraffin sections need antigen repair) not yet tested in other applications. optimal dilutions/concentrations should be determined by the end user.
<b>Molecular weight:</b>	58kDa
<b>Cellular localization:</b>	cytoplasmicThe cell membrane
<b>Form:</b>	Lyophilized or Liquid
<b>Concentration:</b>	1mg/ml
<b>immunogen:</b>	KLH conjugated synthetic peptide derived from human CYP1A1:361-460/512<Cytoplasmic>
<b>Lsotype:</b>	IgG
<b>Purification:</b>	affinity purified by Protein A

<b>Storage Buffer:</b>	0.01M TBS(pH7.4) with 1% BSA, 0.03% Proclin300 and 50% Glycerol.
<b>Storage:</b>	Store at -20 °C for one year. Avoid repeated freeze/thaw cycles. The lyophilized antibody is stable at room temperature for at least one month and for greater than a year when kept at -20°C. When reconstituted in sterile pH 7.4 0.01M PBS or diluent of antibody the antibody is stable for at least two weeks at 2-4 °C.
<b>PubMed:</b>	<a href="#">PubMed</a>
<b>Product Detail:</b>	<p>The Cytochrome P450 (P450) superfamily of enzymes is one of three enzyme systems which metabolize the fatty acid arachadonic acid (AA) to regulators of vascular tone. P450 enzymes are monooxygenase enzymes which require several cofactors such as nicotinamide adenine dinucleotide phosphate (NADPH) and P450 reductase. There are over 200 known genes which encode P450s. Epoxygenases are those P450s which metabolize AA to epoxyeicosatrienoic acid (EETs) and omega hydroxylases are those P450s which produce 19- and 20-hydroxyeicosatetraenoic acids (19- and 20-HETE). As well as fatty acid metabolism, P450s also metabolize many drugs and toxins. Cytochrome P450 3A4 is abundantly expressed in liver and small intestine and is inducible by barbiturates, glucocorticoids and rifampicin.</p> <p><b>Function:</b> Mediates dioxin toxicity and is involved in regulation of cell growth and differentiation. Represses the transcription activity of AHR by competing with this transcription factor for heterodimer formation with the ARNT and subsequently binding to the xenobiotic response element (XRE) sequence present in the promoter regulatory region of variety of genes. Represses CYP1A1 by binding the XRE sequence and recruiting ANKRA2, HDAC4 and/or HDAC5. Autoregulates its expression by associating with its own XRE site.</p> <p><b>Subcellular Location:</b> Cytochrome P450 1A1: Cytoplasm. Cytochrome P450MT2A: Endoplasmic reticulum membrane. Mitochondrion membrane. Microsome membrane. Cytochrome P450MT2B: Endoplasmic reticulum. Mitochondrion.</p> <p><b>Tissue Specificity:</b> Highly expressed in testis, lung, ovary, spleen and pancreas. Highly expressed in mononuclear cells (MNCs) from umbilical cord blood. Isoform 3 is highly expressed in lung, kidney, spleen and thymus. Down-regulated malignant tissue from different anatomical origins, including colon, breast, lung, stomach, cervix, and ovary.</p> <p><b>Similarity:</b> Belongs to the cytochrome P450 family.</p> <p><b>SWISS:</b> A9YTQ3</p> <p><b>Gene ID:</b> 57491</p>

**Database links:**

[Entrez Gene: 57491](#)Human

[Entrez Gene: 11624](#)Mouse

[Entrez Gene: 498999](#)Rat

[Omin: 606517](#)Human

[SwissProt: A9YTQ3](#)Human

[SwissProt: Q3U1U7](#)Mouse

[SwissProt: Q75NT5](#)Rat

[Unigene: 50823](#)Human

[Unigene: 290446](#)Mouse

[Unigene: 145524](#)Rat

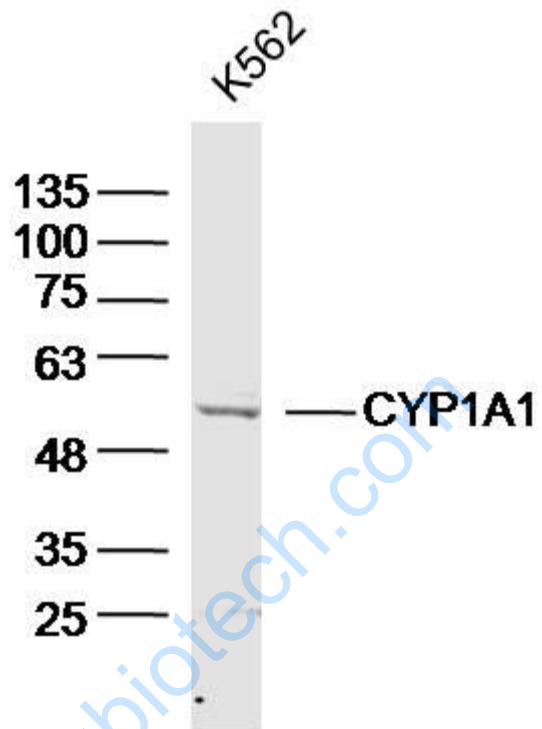
**Important Note:**

This product as supplied is intended for research use only, not for use in human, therapeutic or diagnostic applications.

Synthesis and Degradation (Synthesis and Degradation)

www.sunlongbiotech.com

Picture:



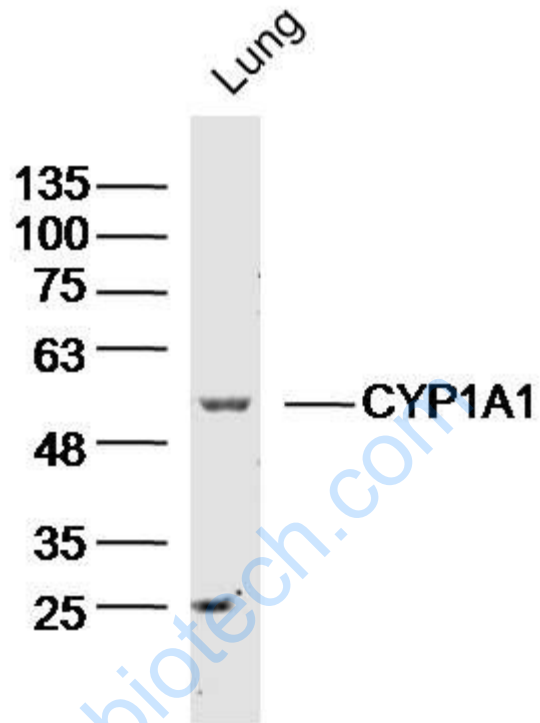
Sample:K562 Cell (Human) Lysate at 30 ug

Primary: Anti- CYP1A1 (SL1606R)at 1/300 dilution

Secondary: IRDye800CW Goat Anti-Rabbit IgG at 1/20000 dilution

Predicted band size: 58kD

Observed band size: 58kD



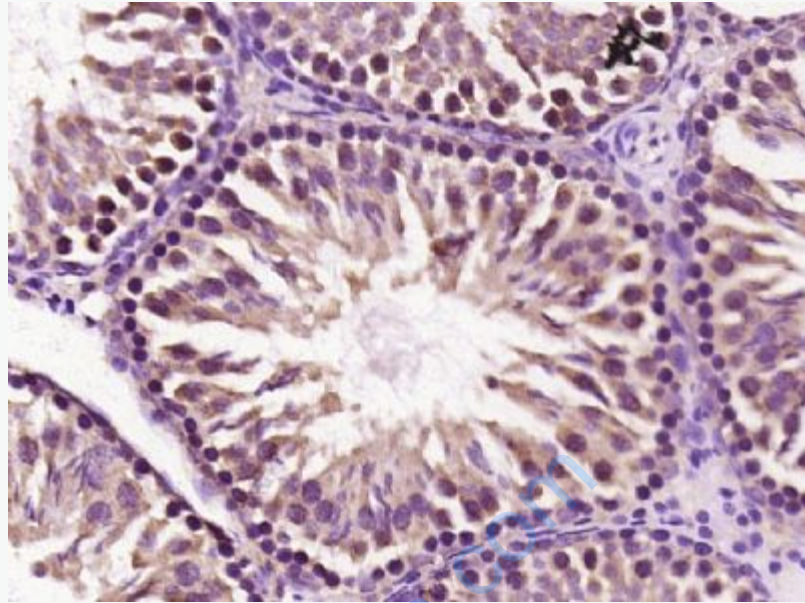
Sample:Lung (Mouse) Lysate at 40 ug

Primary: Anti- CYP1A1 (SL1606R)at 1/300 dilution

Secondary: IRDye800CW Goat Anti-Rabbit IgG at 1/20000 dilution

Predicted band size: 58kD

Observed band size: 58kD



Paraformaldehyde-fixed, paraffin embedded (rat testis tissue); Antigen retrieval by boiling in sodium citrate buffer (pH6.0) for 15min; Block endogenous peroxidase by 3% hydrogen peroxide for 20 minutes; Blocking buffer (normal goat serum) at 37°C for 30min; Antibody incubation with (CYP1A1) Polyclonal Antibody, Unconjugated (SL1606R) at 1:400 overnight at 4°C, followed by operating according to SP Kit(Rabbit) (sp-0023) instructions and DAB staining.