



Rabbit Anti-FMNL3 antibody

SL16151R

Product Name:	FMNL3
Chinese Name:	FMNL3蛋白抗体
Alias:	FHOD3; FMNL3_HUMAN; Formin homology 2 domain containing protein 3; Formin like protein 3; WBP3; WW domain binding protein 3.
Organism Species:	Rabbit
Clonality:	Polyclonal
React Species:	Human,Mouse,Rat,Dog,Cow,
Applications:	WB=1:500-2000ELISA=1:500-1000IHC-P=1:400-800IHC-F=1:400-800Flow-Cyt=1ug/testICC=1:100-500IF=1:100-500 (Paraffin sections need antigen repair) not yet tested in other applications. optimal dilutions/concentrations should be determined by the end user.
Molecular weight:	117kDa
Cellular localization:	cytoplasmic
Form:	Lyophilized or Liquid
Concentration:	1mg/ml
immunogen:	KLH conjugated synthetic peptide derived from human FMNL3:951-1028/1028
Isotype:	IgG
Purification:	affinity purified by Protein A
Storage Buffer:	0.01M TBS(pH7.4) with 1% BSA, 0.03% Proclin300 and 50% Glycerol.
Storage:	Store at -20 °C for one year. Avoid repeated freeze/thaw cycles. The lyophilized antibody is stable at room temperature for at least one month and for greater than a year when kept at -20°C. When reconstituted in sterile pH 7.4 0.01M PBS or diluent of antibody the antibody is stable for at least two weeks at 2-4 °C.
PubMed:	PubMed
Product Detail:	<p>The protein encoded by this gene contains a formin homology 2 domain and has high sequence identity to the mouse Wbp3 protein. Two alternative transcripts encoding different isoforms have been described. [provided by RefSeq, Jul 2008]</p> <p>Function: FMNL3 is an actin-binding protein that contains a formin homology 2 domain.</p>

Subunit:

Interacts with SRGAP2 (via SH3 domain).

Subcellular Location:

Cytoplasm. Note=Enriched in lamellipodia.

Similarity:

Belongs to the formin homology family.

Contains 1 DAD (diaphanous autoregulatory) domain.

Contains 1 FH2 (formin homology 2) domain.

Contains 1 GBD/FH3 (Rho GTPase-binding/formin homology 3) domain.

SWISS:

Q8IVF7

Gene ID:

91010

Database links:

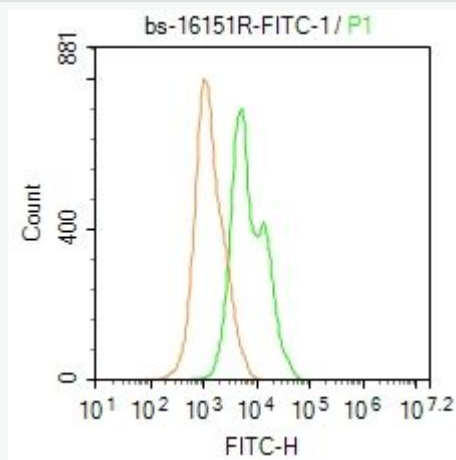
[Entrez Gene: 91010](#) Human

[SwissProt: Q8IVF7](#) Human

[Unigene: 179838](#) Human

Important Note:

This product as supplied is intended for research use only, not for use in human, therapeutic or diagnostic applications.

Picture:

Blank control: Molt4.

Primary Antibody (green line): Rabbit Anti- FMNL3/FITC Conjugated antibody (SL16151R)

Dilution: $1\mu\text{g} / 10^6$ cells;

Isotype Control Antibody (orange line): Rabbit IgG-FITC .

Protocol

The cells were fixed with 4% PFA (10min at room temperature) and then permeabilized with 0.1% PBST for 20 min at -20°C . The cells were then incubated in 5% BSA to block non-specific protein-protein interactions for 30 min at room temperature. The cells were stained with Primary Antibody for 30 min at room temperature. Acquisition of 20,000 events was performed.

www.sunlongbiotech.com