



Rabbit Anti-FOXR2 antibody

SL16176R

| | |
|-------------------------------|--|
| Product Name: | FOXR2 |
| Chinese Name: | 叉头蛋白R2抗体 |
| Alias: | Forkhead box protein N6; Forkhead box protein R2; FOXN6; FOXR2_HUMAN. |
| Organism Species: | Rabbit |
| Clonality: | Polyclonal |
| React Species: | Human, |
| Applications: | WB=1:500-2000ELISA=1:500-1000IHC-P=1:400-800IHC-F=1:400-800ICC=1:100-500IF=1:100-500 (Paraffin sections need antigen repair) not yet tested in other applications. optimal dilutions/concentrations should be determined by the end user. |
| Molecular weight: | 36kDa |
| Cellular localization: | The nucleus |
| Form: | Lyophilized or Liquid |
| Concentration: | 1mg/ml |
| immunogen: | KLH conjugated synthetic peptide derived from human FOXR2:51-150/311 |
| Lsotype: | IgG |
| Purification: | affinity purified by Protein A |
| Storage Buffer: | 0.01M TBS(pH7.4) with 1% BSA, 0.03% Proclin300 and 50% Glycerol. |
| Storage: | Store at -20 °C for one year. Avoid repeated freeze/thaw cycles. The lyophilized antibody is stable at room temperature for at least one month and for greater than a year when kept at -20°C. When reconstituted in sterile pH 7.4 0.01M PBS or diluent of antibody the antibody is stable for at least two weeks at 2-4 °C. |
| PubMed: | PubMed |
| Product Detail: | The Forkhead-box (FOX) genes comprise a superfamily of at least 43 members that express proteins which are involved in transcriptional regulation and may be associated with the pathogenesis of various cancers. FOXR2 (Forkhead box protein R2), also known as FOXN6 (Forkhead box protein N6), is a 311 amino acid nuclear protein that belongs to the FOX family and contains one fork-head DNA-binding domain. Like other members of the FOX family, FOXR2 is not abundantly expressed in normal tissues but is found at very high levels in breast cancer and primary cancer cell lines and is thought |

to act as a transcription factor. Through chromosomal aberrations such as retroviral integration, gene amplification or translocation, FOXR2 may be involved the development of certain invasive carcinomas.

Function:

Forkhead-box (FOX) transcription factors are implicated in carcinogenesis through gene amplification, retroviral integration, or chromosomal translocation. Human FOXR2 mRNA was expressed in breast cancer cell line and primary breast cancer.

Subcellular Location:

Nuclear

Tissue Specificity:

Expressed in breast cancer cell lines and primary cancer.

Similarity:

Contains 1 fork-head DNA-binding domain.

SWISS:

Q6PJQ5

Gene ID:

139628

Database links:

[Entrez Gene: 139628](#) Human

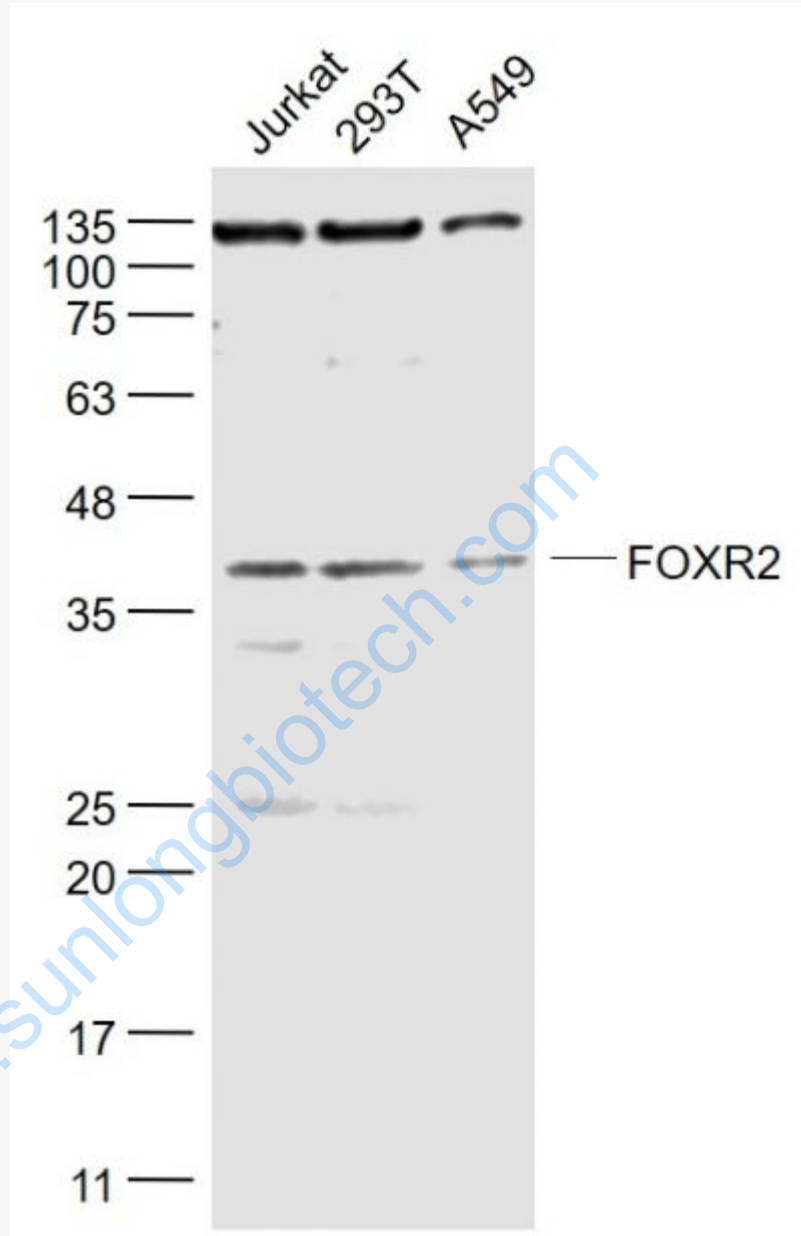
[SwissProt: Q6PJQ5](#) Human

[Unigene: 364260](#) Human

Important Note:

This product as supplied is intended for research use only, not for use in human, therapeutic or diagnostic applications.

Picture:



Sample:

Jurkat(Human) Cell Lysate at 30 ug

293T(Human) Cell Lysate at 30 ug

A549(Human) Cell Lysate at 30 ug

Primary: Anti- FOXR2 (SL16176R) at 1/1000 dilution

Secondary: IRDye800CW Goat Anti-Rabbit IgG at 1/20000 dilution

Predicted band size: 36 kD

Observed band size: 36 kD

www.sunlongbiotech.com