



Rabbit Anti-GRWD1 antibody

SL16328R

Product Name:	GRWD1
Chinese Name:	GRWD1蛋白抗体
Alias:	CDW4; CUL4 and DDB1 associated WDR protein 4; Glutamate rich WD repeat containing 1; Glutamate rich WD repeat containing protein 1; Glutamate rich WD repeat protein GRWD; Glutamate-rich WD repeat-containing protein 1; GRWD 1; GRWD; grwd1; GRWD1_HUMAN; KIAA1942; Regulator of ribosome biogenesis 1 homolog; RRB 1; RRB1; WD repeat domain 28; WDR 28; WDR28.
Organism Species:	Rabbit
Clonality:	Polyclonal
React Species:	Human,Mouse,Rat,Dog,Cow,Horse,Rabbit,Sheep,
Applications:	ELISA=1:500-1000IHC-P=1:400-800IHC-F=1:400-800ICC=1:100-500IF=1:100-500 (Paraffin sections need antigen repair) not yet tested in other applications. optimal dilutions/concentrations should be determined by the end user.
Molecular weight:	49kDa
Cellular localization:	The nucleus
Form:	Lyophilized or Liquid
Concentration:	1mg/ml
immunogen:	KLH conjugated synthetic peptide derived from human GRWD1:301-400/446
Lsotype:	IgG
Purification:	affinity purified by Protein A
Storage Buffer:	0.01M TBS(pH7.4) with 1% BSA, 0.03% Proclin300 and 50% Glycerol.
Storage:	Store at -20 °C for one year. Avoid repeated freeze/thaw cycles. The lyophilized antibody is stable at room temperature for at least one month and for greater than a year when kept at -20°C. When reconstituted in sterile pH 7.4 0.01M PBS or diluent of antibody the antibody is stable for at least two weeks at 2-4 °C.
PubMed:	PubMed
Product Detail:	This gene encodes a glutamate-rich protein that contains five WD-repeat motifs. The encoded protein may play a critical role in ribosome biogenesis and may also play a role in histone methylation through interactions with CUL4-DDB1 ubiquitin E3 ligase.

[provided by RefSeq, Feb 2012]

Subunit:

Interacts with METTL18.

Subcellular Location:

Nucleus, nucleolus.

Similarity:

Contains 5 WD repeats.

SWISS:

Q9BQ67

Gene ID:

83743

Database links:

[Entrez Gene: 468939](#) Chimpanzee

[Entrez Gene: 540739](#) Cow

[Entrez Gene: 83743](#) Human

[Entrez Gene: 612058](#) Dog

[Entrez Gene: 101144842](#) Gorilla

[Entrez Gene: 100733019](#) Guinea pig

[Entrez Gene: 100051020](#) Horse

[Entrez Gene: 100386385](#) Marmoset (common)

[Entrez Gene: 100441405](#) Orangutan

[Entrez Gene: 717966](#) Rhesus monkey

[Omim: 610597](#) Human

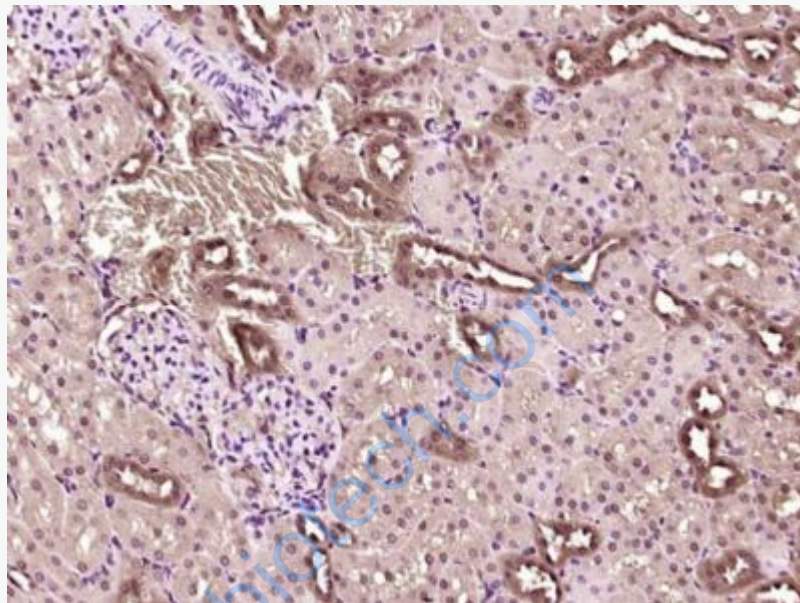
[SwissProt: Q1JQD2](#) Cow

[SwissProt: Q9BQ67](#) Human

[Unigene: 400625](#) Human

Important Note:

This product as supplied is intended for research use only, not for use in human, therapeutic or diagnostic applications.



Picture:

Paraformaldehyde-fixed, paraffin embedded (Rat kidney); Antigen retrieval by boiling in sodium citrate buffer (pH6.0) for 15min; Block endogenous peroxidase by 3% hydrogen peroxide for 20 minutes; Blocking buffer (normal goat serum) at 37°C for 30min; Antibody incubation with (GRWD1) Polyclonal Antibody, Unconjugated (SL16328R) at 1:400 overnight at 4°C, followed by operating according to SP Kit(Rabbit) (sp-0023) instructions and DAB staining.