



Rabbit Anti-GSDMA antibody

SL16331R

Product Name:	GSDMA
Chinese Name:	gasdermin蛋白抗体
Alias:	FKSG9; Gasdermin 1; Gasdermin A; GSDM; GSDMA HUMAN; GSDM1.
Organism Species:	Rabbit
Clonality:	Polyclonal
React Species:	Human,Mouse,Rat,Dog,Cow,Horse,
Applications:	ELISA=1:500-1000IHC-P=1:400-800IHC-F=1:400-800ICC=1:100-500IF=1:100-500 (Paraffin sections need antigen repair) not yet tested in other applications. optimal dilutions/concentrations should be determined by the end user.
Molecular weight:	49kDa
Cellular localization:	cytoplasmic
Form:	Lyophilized or Liquid
Concentration:	1mg/ml
immunogen:	KLH conjugated synthetic peptide derived from human GSDMA:21-120/445
Lsotype:	IgG
Purification:	affinity purified by Protein A
Storage Buffer:	0.01M TBS(pH7.4) with 1% BSA, 0.03% Proclin300 and 50% Glycerol.
Storage:	Store at -20 °C for one year. Avoid repeated freeze/thaw cycles. The lyophilized antibody is stable at room temperature for at least one month and for greater than a year when kept at -20°C. When reconstituted in sterile pH 7.4 0.01M PBS or diluent of antibody the antibody is stable for at least two weeks at 2-4 °C.
PubMed:	PubMed
Product Detail:	Gasdermin is a 445 amino acid protein that localizes to the perinuclear region of the cytoplasm and belongs to the gasdermin family. Expressed predominately in tissues of the gastrointestinal tract and also present in skin and mammary gland, gasdermin functions to induce apoptosis and is thought to possess tumor suppression activity, specifically in gastric cancer cells. The gene encoding gasdermin maps to human chromosome 17, which comprises over 2.5% of the human genome and encodes over 1,200 genes. Two key tumor suppressor genes are associated with chromosome 17,

namely, p53 and BRCA1. Tumor suppressor p53 is necessary for maintenance of cellular genetic integrity by moderating cell fate through DNA repair versus cell death. Malfunction or loss of p53 expression is associated with malignant cell growth and Li-Fraumeni syndrome. Like p53, BRCA1 is directly involved in DNA repair, though specifically it is recognized as a genetic determinant of early onset breast cancer and predisposition to cancers of the ovary, colon, prostate gland and fallopian tubes.

Function:

GSDMA induces apoptosis.

Subcellular Location:

Cytoplasm, perinuclear region

Tissue Specificity:

Expressed predominantly in the gastrointestinal tract and in the skin at a lower level. Also detected in mammary gland. Detected in mucus-secreting pit cells of the gastric epithelium. Not expressed in gastric cancer cells.

Similarity:

Belongs to the gasdermin family.

SWISS:

Q96QA5

Gene ID:

284110

Database links:

[Entrez Gene: 284110](#) Human

[Entrez Gene: 57911](#) Mouse

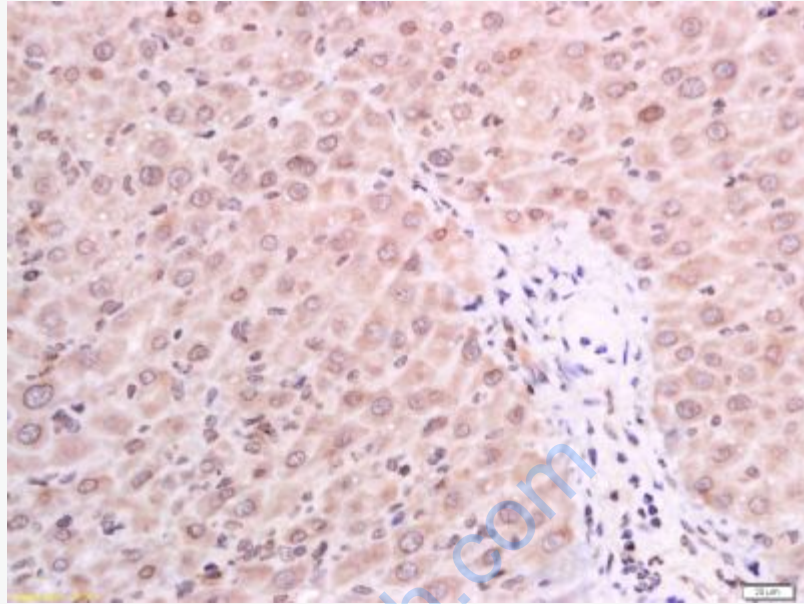
[Oimim: 611218](#) Human

[SwissProt: Q96QA5](#) Human

[SwissProt: Q9EST1](#) Mouse

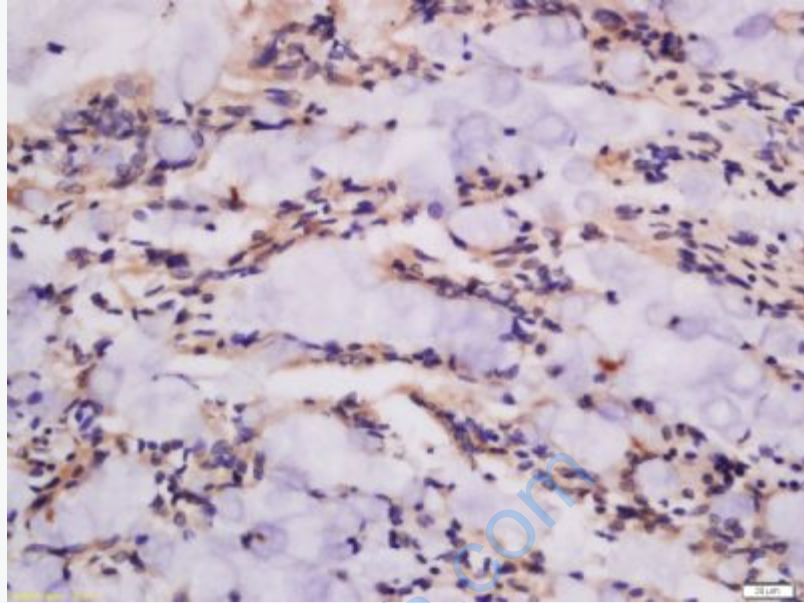
Important Note:

This product as supplied is intended for research use only, not for use in human, therapeutic or diagnostic applications.



Picture:

Tissue/cell: mouse liver tissue; 4% Paraformaldehyde-fixed and paraffin-embedded;
Antigen retrieval: citrate buffer (0.01M, pH 6.0), Boiling bathing for 15min; Block
endogenous peroxidase by 3% Hydrogen peroxide for 30min; Blocking buffer
(normal goat serum,C-0005) at 37°C for 20 min;
Incubation: Anti-GSDMA Polyclonal Antibody, Unconjugated(SL16331R) 1:200,
overnight at 4°C, followed by conjugation to the secondary antibody(SP-0023) and
DAB(C-0010) staining



Tissue/cell: rat rectum tissue; 4% Paraformaldehyde-fixed and paraffin-embedded;
Antigen retrieval: citrate buffer (0.01M, pH 6.0), Boiling bathing for 15min; Block endogenous peroxidase by 3% Hydrogen peroxide for 30min; Blocking buffer (normal goat serum,C-0005) at 37°C for 20 min;
Incubation: Anti-GSDMA Polyclonal Antibody, Unconjugated(SL16331R) 1:200, overnight at 4°C, followed by conjugation to the secondary antibody(SP-0023) and DAB(C-0010) staining