



Rabbit Anti-GSG1L antibody

SL16335R

Product Name:	GSG1L
Chinese Name:	生殖细胞相关1样蛋白抗体
Alias:	Germ cell-specific gene 1-like protein; GSG1-like protein; GSG1L; GSG1L_HUMAN; KTSR5831; MGC18079; PRO19651.
Organism Species:	Rabbit
Clonality:	Polyclonal
React Species:	Human,Mouse,Rat,Dog,Pig,Cow,
Applications:	WB=1:500-2000ELISA=1:500-1000 not yet tested in other applications. optimal dilutions/concentrations should be determined by the end user.
Molecular weight:	37kDa
Cellular localization:	The cell membrane
Form:	Lyophilized or Liquid
Concentration:	1mg/ml
immunogen:	KLH conjugated synthetic peptide derived from human GSG1L:1-100/331<Extracellular>
Lsotype:	IgG
Purification:	affinity purified by Protein A
Storage Buffer:	0.01M TBS(pH7.4) with 1% BSA, 0.03% Proclin300 and 50% Glycerol.
Storage:	Store at -20 °C for one year. Avoid repeated freeze/thaw cycles. The lyophilized antibody is stable at room temperature for at least one month and for greater than a year when kept at -20°C. When reconstituted in sterile pH 7.4 0.01M PBS or diluent of antibody the antibody is stable for at least two weeks at 2-4 °C.
PubMed:	PubMed
Product Detail:	GSG1L is a 331 amino acid multi-pass membrane protein belonging to the GSG1 family. Existing as four alternatively spliced isoforms, GSG1L is encoded by a gene located on human chromosome 16, which encodes over 900 genes, comprises nearly 3% of the human genome and is associated with a variety of genetic disorders. The GAN gene is located on chromosome 16 and, with mutation, may lead to giant axonal neuropathy, a nervous system disorder characterized by increasing malfunction with

growth. A rare disorder known as Rubinstein-Taybi syndrome is associated with chromosome 16, as is Crohn's disease, which is a gastrointestinal inflammatory condition.

Subcellular Location:

Membrane.

Similarity:

Belongs to the GSG1 family.

SWISS:

Q6UXU4

Gene ID:

146395

Database links:

[Entrez Gene: 146395](#) Human

[Entrez Gene: 269994](#) Mouse

[Entrez Gene: 499263](#) Rat

[SwissProt: Q6UXU4](#) Human

[SwissProt: D3Z7H4](#) Mouse

[SwissProt: D3ZK93](#) Rat

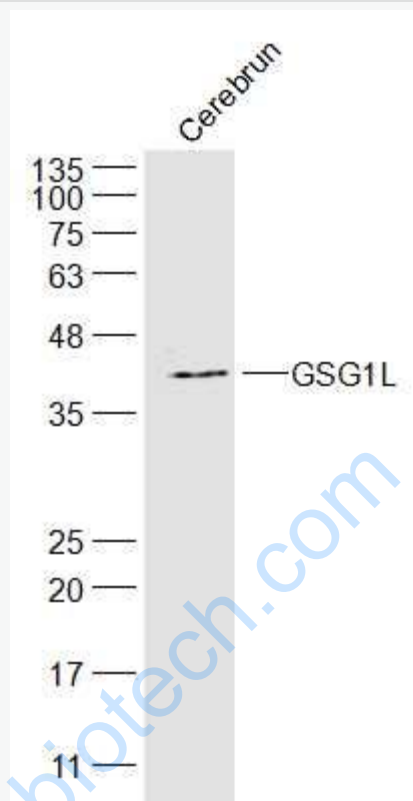
[SwissProt: Q4V922](#) Zebrafish

[Unigene: 91910](#) Human

Important Note:

This product as supplied is intended for research use only, not for use in human, therapeutic or diagnostic applications.

Picture:



Sample:

Cerebrum (Mouse) Lysate at 40 ug

Primary: Anti-GSG1L (SL16335R) at 1/300 dilution

Secondary: IRDye800CW Goat Anti-Rabbit IgG at 1/20000 dilution

Predicted band size: 37 kD

Observed band size: 37 kD