



## Rabbit Anti-ZYG11BL antibody

SL16389R

<b>Product Name:</b>	ZYG11BL
<b>Chinese Name:</b>	ZYG11BL蛋白抗体
<b>Alias:</b>	C9orf60; chromosome 9 open reading frame 60; homolog of Zyg 11; Hzyg; Protein zer-1 homolog; zer 1 homolog (C elegans); ZER1; ZER1_HUMAN; ZYG; zyg 11 homolog B (C elegans) like; Zyg 11 homolog B like protein; ZYG homolog; Zyg-11 homolog B-like protein.
<b>Organism Species:</b>	Rabbit
<b>Clonality:</b>	Polyclonal
<b>React Species:</b>	Human,Mouse,Rat,Dog,Pig,Cow,Horse,Rabbit,Sheep,
<b>Applications:</b>	WB=1:500-2000ELISA=1:500-1000IHC-P=1:400-800IHC-F=1:400-800ICC=1:100-500IF=1:100-500 (Paraffin sections need antigen repair) not yet tested in other applications. optimal dilutions/concentrations should be determined by the end user.
<b>Molecular weight:</b>	88kDa
<b>Cellular localization:</b>	cytoplasmic
<b>Form:</b>	Lyophilized or Liquid
<b>Concentration:</b>	1mg/ml
<b>immunogen:</b>	KLH conjugated synthetic peptide derived from human ZYG11BL:21-120/766
<b>Lsotype:</b>	IgG
<b>Purification:</b>	affinity purified by Protein A
<b>Storage Buffer:</b>	0.01M TBS(pH7.4) with 1% BSA, 0.03% Proclin300 and 50% Glycerol.
<b>Storage:</b>	Store at -20 °C for one year. Avoid repeated freeze/thaw cycles. The lyophilized antibody is stable at room temperature for at least one month and for greater than a year when kept at -20°C. When reconstituted in sterile pH 7.4 0.01M PBS or diluent of antibody the antibody is stable for at least two weeks at 2-4 °C.
<b>PubMed:</b>	<a href="#">PubMed</a>
<b>Product Detail:</b>	This gene encodes a subunit of an E3 ubiquitin ligase complex that may be involved in meiosis. The encoded protein contains three leucine-rich repeat motifs. [provided by RefSeq, Nov 2012]

**Function:**

Probably acts as target recruitment subunit in the E3 ubiquitin ligase complex ZER1-CUL2-Elongin BC.

**Tissue Specificity:**

Expressed in testis, spermatocytes and spermatids (at protein level). Expressed in spermatocytes, spermatids, prostate, skeletal muscle, ovary, small intestine, heart, brain and pancreas.

**Similarity:**

Belongs to the zyg-11 family.  
Contains 5 ARM repeats.  
Contains 3 LRR (leucine-rich) repeats.

**SWISS:**

Q7Z7L7

**Gene ID:**

10444

**Database links:**

[Entrez Gene: 10444](#) Human

[Entrez Gene: 227693](#) Mouse

[SwissProt: Q7Z7L7](#) Human

[SwissProt: Q80ZJ6](#) Mouse

[Unigene: 147950](#) Human

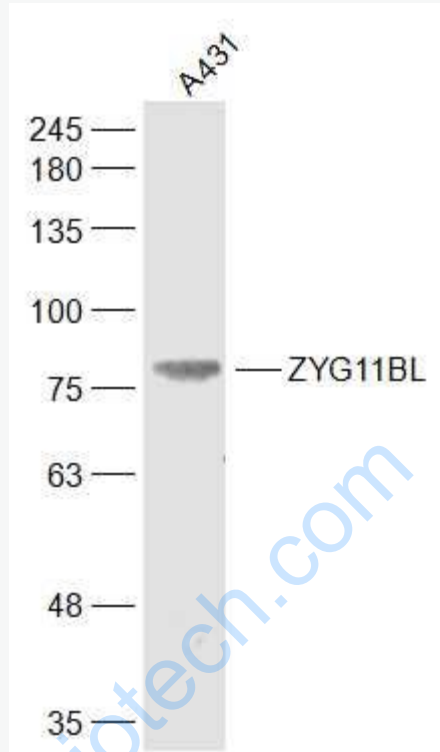
[Unigene: 44526](#) Mouse

[Unigene: 488942](#) Mouse

**Important Note:**

This product as supplied is intended for research use only, not for use in human, therapeutic or diagnostic applications.

Picture:



Sample:

A431(Human) Cell Lysate at 30 ug

Primary: Anti-ZYG11BL (SL16389R) at 1/300 dilution

Secondary: IRDye800CW Goat Anti-Rabbit IgG at 1/20000 dilution

Predicted band size: 88 kD

Observed band size: 88 kD