



Rabbit Anti-Hemoglobin subunit delta antibody

SL16467R

Product Name:	Hemoglobin subunit delta
Chinese Name:	血红蛋白δ抗体
Alias:	Delta-globin; HBD; HBD_HUMAN; Hemoglobin delta chain; Hemoglobin subunit delta.
Organism Species:	Rabbit
Clonality:	Polyclonal
React Species:	Human,
Applications:	ELISA=1:500-1000IHC-P=1:400-800IHC-F=1:400-800ICC=1:100-500IF=1:100-500 (Paraffin sections need antigen repair) not yet tested in other applications. optimal dilutions/concentrations should be determined by the end user.
Molecular weight:	16kDa
Cellular localization:	cytoplasmicExtracellular matrixSecretory protein
Form:	Lyophilized or Liquid
Concentration:	1mg/ml
immunogen:	KLH conjugated synthetic peptide derived from human Hemoglobin subunit delta:2-80/147
Lsotype:	IgG
Purification:	affinity purified by Protein A
Storage Buffer:	0.01M TBS(pH7.4) with 1% BSA, 0.03% Proclin300 and 50% Glycerol.
Storage:	Store at -20 °C for one year. Avoid repeated freeze/thaw cycles. The lyophilized antibody is stable at room temperature for at least one month and for greater than a year when kept at -20°C. When reconstituted in sterile pH 7.4 0.01M PBS or diluent of antibody the antibody is stable for at least two weeks at 2-4 °C.
PubMed:	PubMed
Product Detail:	The delta (HBD) and beta (HBB) genes are normally expressed in the adult: two alpha chains plus two beta chains constitute HbA, which in normal adult life comprises about 97% of the total hemoglobin. Two alpha chains plus two delta chains constitute HbA-2, which with HbF comprises the remaining 3% of adult hemoglobin. Five beta-like globin genes are found within a 45 kb cluster on chromosome 11 in the following order: 5'-

epsilon--Ggamma--Agamma--delta--beta-3'. Mutations in the delta-globin gene are associated with beta-thalassemia. [provided by RefSeq, Jul 2008]

Function:

Involved in oxygen transport from the lung to the various peripheral tissues.

Tissue Specificity:

Red blood cells.

Similarity:

Belongs to the globin family.

SWISS:

P02042

Gene ID:

3045

Database links:

[Entrez Gene: 3045](#) Human

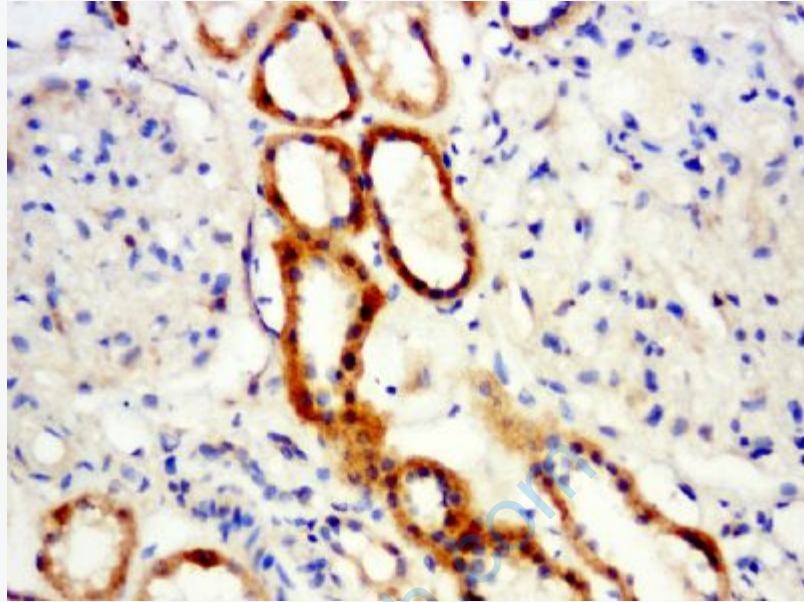
[Omim: 142000](#) Human

[SwissProt: P02042](#) Human

[Unigene: 699280](#) Human

Important Note:

This product as supplied is intended for research use only, not for use in human, therapeutic or diagnostic applications.



Picture:

Paraformaldehyde-fixed, paraffin embedded (Human kidney); Antigen retrieval by boiling in sodium citrate buffer (pH6.0) for 15min; Block endogenous peroxidase by 3% hydrogen peroxide for 20 minutes; Blocking buffer (normal goat serum) at 37°C for 30min; Antibody incubation with (HBD) Polyclonal Antibody, Unconjugated (SL16467R) at 1:500 overnight at 4°C, followed by a conjugated secondary (sp-0023) for 20 minutes and DAB staining.