



Rabbit Anti-TRAM1 antibody

SL16565R

Product Name:	TRAM1
Chinese Name:	相关易位膜蛋白1抗体
Alias:	PNAS 8; PNAS8; PRO1292; TRAM 1; TRAM; TRAM1_HUMAN; TRAMP; Translocating chain associated membrane protein 1; Translocating chain associating membrane protein; Translocation associated membrane protein 1; Translocation associating membrane protein 1.
Organism Species:	Rabbit
Clonality:	Polyclonal
React Species:	Human,Mouse,Rat,Dog,Pig,Cow,Horse,Rabbit,Sheep,
Applications:	ELISA=1:500-1000IHC-P=1:400-800IHC-F=1:400-800ICC=1:100-500IF=1:100-500 (Paraffin sections need antigen repair) not yet tested in other applications. optimal dilutions/concentrations should be determined by the end user.
Molecular weight:	43kDa
Cellular localization:	cytoplasmic
Form:	Lyophilized or Liquid
Concentration:	1mg/ml
immunogen:	KLH conjugated synthetic peptide derived from human TRAM1:61-160/374
Lsotype:	IgG
Purification:	affinity purified by Protein A
Storage Buffer:	0.01M TBS(pH7.4) with 1% BSA, 0.03% Proclin300 and 50% Glycerol.
Storage:	Store at -20 °C for one year. Avoid repeated freeze/thaw cycles. The lyophilized antibody is stable at room temperature for at least one month and for greater than a year when kept at -20°C. When reconstituted in sterile pH 7.4 0.01M PBS or diluent of antibody the antibody is stable for at least two weeks at 2-4 °C.
PubMed:	PubMed
Product Detail:	TRAM1 belongs to the TRAM family. It stimulates or is required for the translocation of secretory proteins across the endoplasmic reticulum membrane. Function:

Stimulatory or required for the translocation of secretory proteins across the ER membrane.

Subunit:

Interacts with human cytomegalovirus/HHV-5 protein US2.

Subcellular Location:

Endoplasmic reticulum membrane; Multipass membrane protein

Similarity:

Belongs to the TRAM family.

Contains 1 TLC (TRAM/LAG1/CLN8) domain.

SWISS:

Q15629

Gene ID:

23471

Database links:

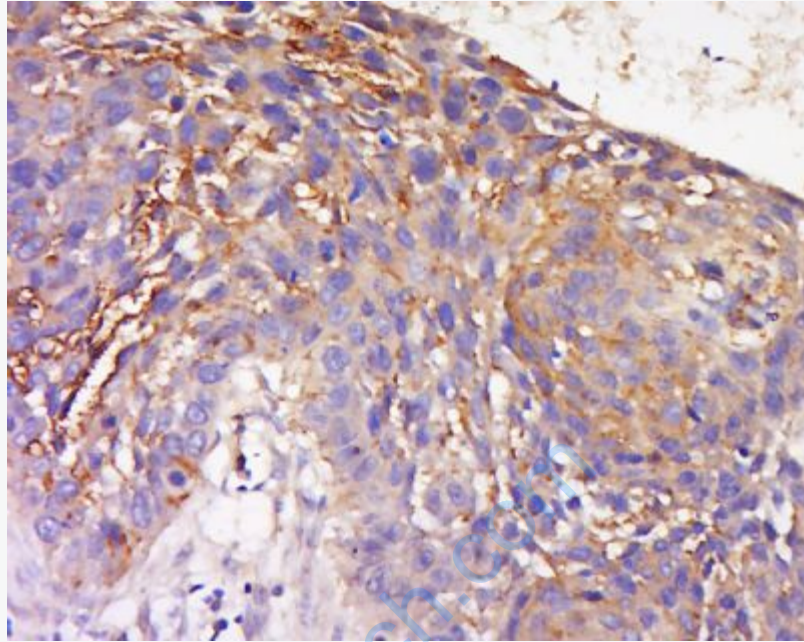
[Entrez Gene: 23471](#) Human

[Omir: 605190](#) Human

[SwissProt: Q15629](#) Human

Important Note:

This product as supplied is intended for research use only, not for use in human, therapeutic or diagnostic applications.



Picture:

Tissue/cell: Human lung carcinoma; 4% Paraformaldehyde-fixed and paraffin-embedded;

Antigen retrieval: citrate buffer (0.01M, pH 6.0), Boiling bathing for 15min; Block endogenous peroxidase by 3% Hydrogen peroxide for 30min; Blocking buffer (normal goat serum,C-0005) at 37°C for 20 min;

Incubation: Anti-TRAM1 Polyclonal Antibody, Unconjugated(SL16565R) 1:200, overnight at 4°C, followed by conjugation to the secondary antibody(SP-0023) and DAB(C-0010) staining