



Rabbit Anti-Transmembrane protein 30A antibody

SL16576R

Product Name:	Transmembrane protein 30A
Chinese Name:	Transmembrane protein30A抗体
Alias:	C6orf67; CDC50A; CC50A_HUMAN; Cell cycle control protein 50A; FLJ10856; TMEM30A.
Organism Species:	Rabbit
Clonality:	Polyclonal
React Species:	Human,Mouse,Rat,Pig,Cow,Rabbit,
Applications:	WB=1:500-2000ELISA=1:500-1000IHC-P=1:400-800IHC-F=1:400-800ICC=1:100-500IF=1:100-500 (Paraffin sections need antigen repair) not yet tested in other applications. optimal dilutions/concentrations should be determined by the end user.
Molecular weight:	41kDa
Cellular localization:	The cell membrane
Form:	Lyophilized or Liquid
Concentration:	1mg/ml
immunogen:	KLH conjugated synthetic peptide derived from human Transmembrane protein 30A:251-350/361
Lsotype:	IgG
Purification:	affinity purified by Protein A
Storage Buffer:	0.01M TBS(pH7.4) with 1% BSA, 0.03% Proclin300 and 50% Glycerol.
Storage:	Store at -20 °C for one year. Avoid repeated freeze/thaw cycles. The lyophilized antibody is stable at room temperature for at least one month and for greater than a year when kept at -20°C. When reconstituted in sterile pH 7.4 0.01M PBS or diluent of antibody the antibody is stable for at least two weeks at 2-4 °C.
PubMed:	PubMed
Product Detail:	Cdc50A is a 361 amino acid multi-pass membrane protein that is expressed in placenta, brain and embryonic stem cells and may play a role in cell division. The gene encoding Cdc50A maps to human chromosome 6, which contains 170 million base pairs and comprises nearly 6% of the human genome. Deletion of a portion of the q arm of chromosome 6 is associated with early onset intestinal cancer, suggesting the presence

of a cancer susceptibility locus. Additionally, Porphyria cutanea tarda, Parkinson's disease, Stickler syndrome and a susceptibility to bipolar disorder are all associated with genes that map to chromosome 6

Subcellular Location:

Membrane; Multi-pass membrane protein

Similarity:

Belongs to the CDC50/LEM3 family.

SWISS:

Q9NV96

Gene ID:

55754

Database links:

[Entrez Gene: 55754](#) Human

[Entrez Gene: 69981](#) Mouse

[Entrez Gene: 300857](#) Rat

[Entrez Gene: 337397](#) Zebrafish

[Omim: 611028](#) Human

[SwissProt: E2R2Z8](#) Dog

[SwissProt: Q9NV96](#) Human

[SwissProt: Q8VEK0](#) Mouse

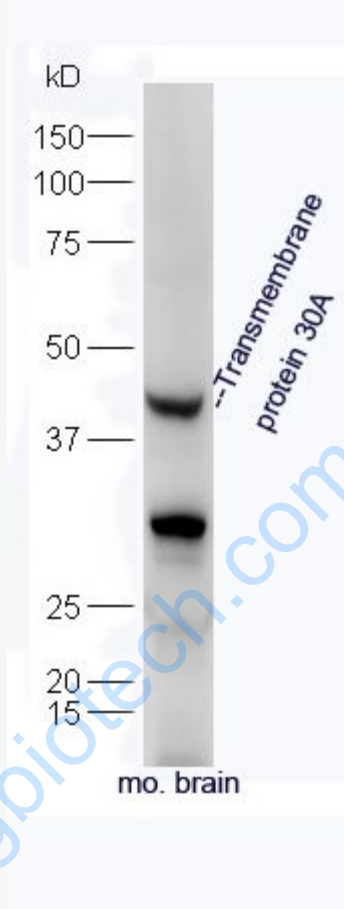
[SwissProt: D3ZYA3](#) Rat

[SwissProt: Q6TNV5](#) Zebrafish

Important Note:

This product as supplied is intended for research use only, not for use in human, therapeutic or diagnostic applications.

Picture:



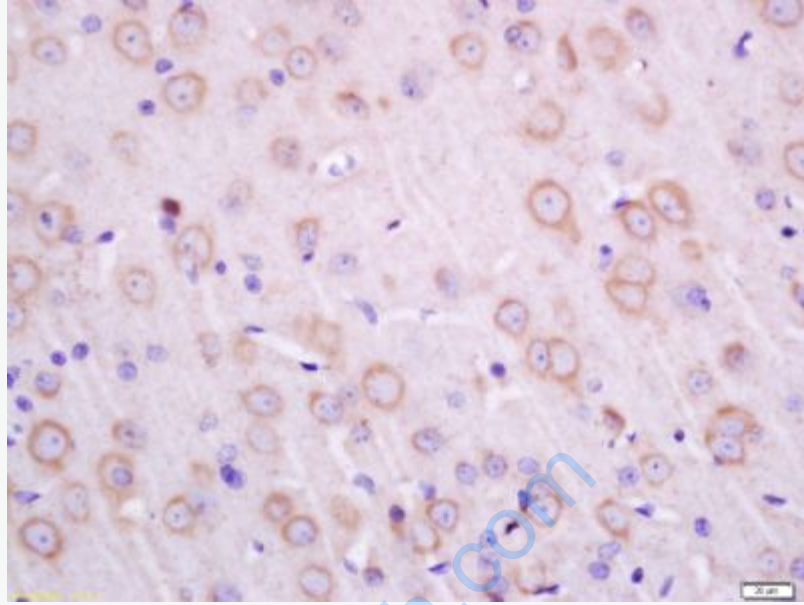
Protein: brain(mouse) lysate at 40ug;

Primary: rabbit Anti-Transmembrane protein 30A (SL16576R) at 1:300;

Secondary: HRP conjugated Goat-Anti-rabbit IgG(SL16576R) at 1: 5000;

Predicted band size: 41 kD

Observed band size: 41 kD



Tissue/cell: rat brain tissue; 4% Paraformaldehyde-fixed and paraffin-embedded;
Antigen retrieval: citrate buffer (0.01M, pH 6.0), Boiling bathing for 15min; Block endogenous peroxidase by 3% Hydrogen peroxide for 30min; Blocking buffer (normal goat serum,C-0005) at 37°C for 20 min;
Incubation: Anti-Transmembrane protein 30A Polyclonal Antibody, Unconjugated(SL16576R) 1:200, overnight at 4°C, followed by conjugation to the secondary antibody(SP-0023) and DAB(C-0010) staining