



## Rabbit Anti-TRAPPC6B antibody

SL16588R

<b>Product Name:</b>	TRAPPC6B
<b>Chinese Name:</b>	TRAPPC6B蛋白抗体
<b>Alias:</b>	FLJ17772; FLJ79549; TPC6B_HUMAN; TPC6; Trafficking protein particle complex 6B; Trafficking protein particle complex subunit 6B.
<b>Organism Species:</b>	Rabbit
<b>Clonality:</b>	Polyclonal
<b>React Species:</b>	Human,Mouse,Rat,Cow,
<b>Applications:</b>	WB=1:500-2000ELISA=1:500-1000IHC-P=1:400-800IHC-F=1:400-800ICC=1:100-500IF=1:100-500 (Paraffin sections need antigen repair) not yet tested in other applications. optimal dilutions/concentrations should be determined by the end user.
<b>Molecular weight:</b>	18kDa
<b>Cellular localization:</b>	cytoplasmic
<b>Form:</b>	Lyophilized or Liquid
<b>Concentration:</b>	1mg/ml
<b>immunogen:</b>	KLH conjugated synthetic peptide derived from human TRAPPC6B:51-120/159
<b>Lsotype:</b>	IgG
<b>Purification:</b>	affinity purified by Protein A
<b>Storage Buffer:</b>	0.01M TBS(pH7.4) with 1% BSA, 0.03% Proclin300 and 50% Glycerol.
<b>Storage:</b>	Store at -20 °C for one year. Avoid repeated freeze/thaw cycles. The lyophilized antibody is stable at room temperature for at least one month and for greater than a year when kept at -20°C. When reconstituted in sterile pH 7.4 0.01M PBS or diluent of antibody the antibody is stable for at least two weeks at 2-4 °C.
<b>PubMed:</b>	<a href="#">PubMed</a>
<b>Product Detail:</b>	TRAPPC6B is a component of TRAPP complexes, which are tethering complexes involved in vesicle transport (Kummel et al., 2005 [PubMed 16025134]).[supplied by OMIM, Mar 2008]  <b>Function:</b> TRAPPC6B is a component of TRAPP complexes, which are tethering complexes

involved in vesicle transport. There are two named human isoforms, produced by alternative splicing.

**Subunit:**

Part of the multisubunit TRAPP (transport protein particle) complex. Homodimer. Heterodimer with TRAPPC3.

**Subcellular Location:**

Golgi apparatus, cis-Golgi network. Endoplasmic reticulum.

**Similarity:**

Belongs to the TRAPP small subunits family. BET3 subfamily.

**SWISS:**

Q86SZ2

**Gene ID:**

122553

**Database links:**

[Entrez Gene: 122553](#) Human

[Entrez Gene: 78232](#) Mouse

[Entrez Gene: 299075](#) Rat

[Omim: 610397](#) Human

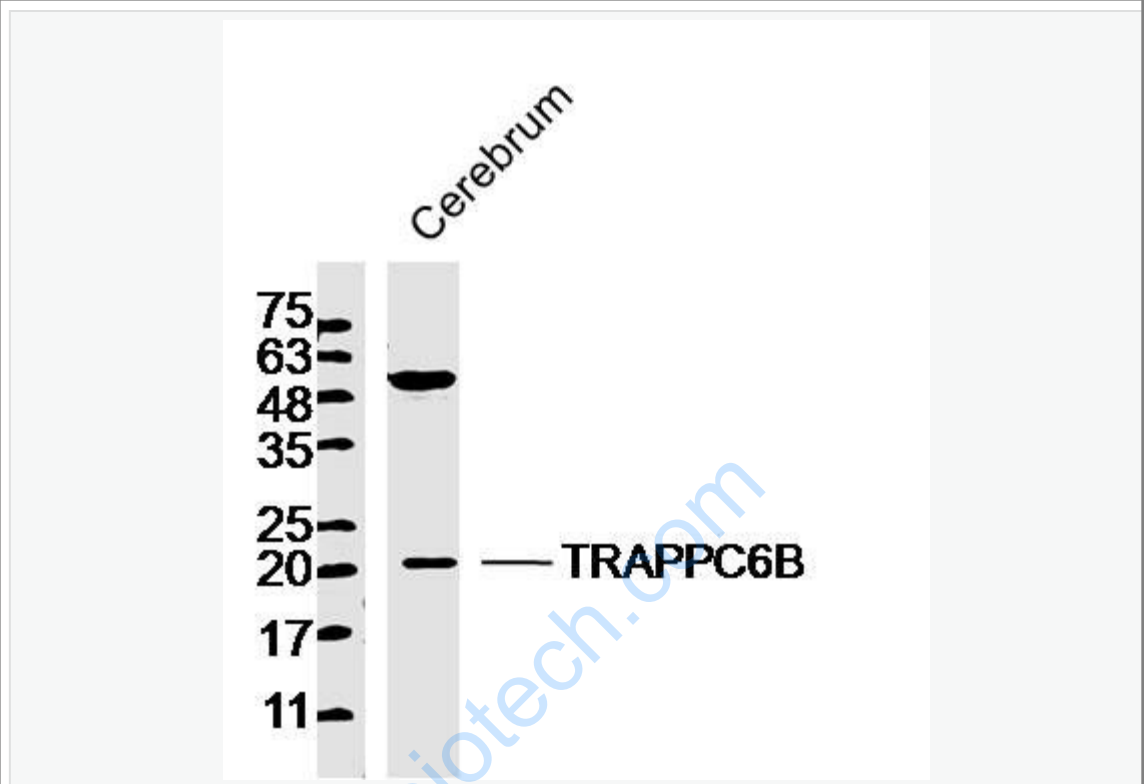
[SwissProt: Q86SZ2](#) Human

[SwissProt: Q9D289](#) Mouse

**Important Note:**

This product as supplied is intended for research use only, not for use in human, therapeutic or diagnostic applications.

Picture:



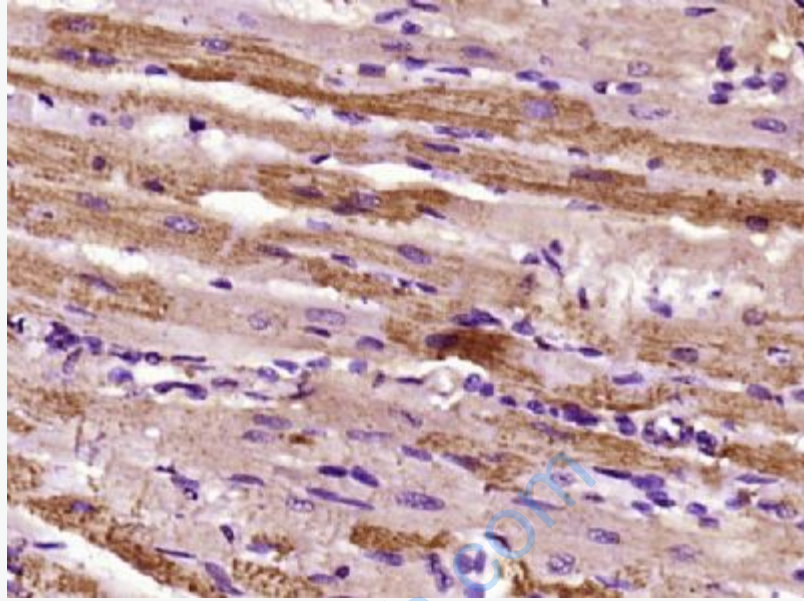
Sample: Cerebrum (Mouse) Lysate at 40 ug

Primary: Anti-TRAPPC6B (SL16588R) at 1/300 dilution

Secondary: IRDye800CW Goat Anti-Rabbit IgG at 1/20000 dilution

Predicted band size: 18 kD

Observed band size: 20 kD



Paraformaldehyde-fixed, paraffin embedded (Rat heart); Antigen retrieval by boiling in sodium citrate buffer (pH6.0) for 15min; Block endogenous peroxidase by 3% hydrogen peroxide for 20 minutes; Blocking buffer (normal goat serum) at 37°C for 30min; Antibody incubation with (TRAPPC6B) Polyclonal Antibody, Unconjugated (SL16588R) at 1:400 overnight at 4°C, followed by operating according to SP Kit(Rabbit) (sp-0023) instructions and DAB staining.