



## Rabbit Anti-TRAPPCL2 antibody

SL16590R

<b>Product Name:</b>	TRAPPCL2
<b>Chinese Name:</b>	HSPC176蛋白抗体
<b>Alias:</b>	FLJ44827; Hematopoietic stem/progenitor cells 176; HSPC176; MGC111156; TPC2L_HUMAN; Trafficking protein particle complex 2 like; Trafficking protein particle complex subunit 2 like protein.
<b>Organism Species:</b>	Rabbit
<b>Clonality:</b>	Polyclonal
<b>React Species:</b>	Human,Mouse,Rat,Dog,Pig,Cow,Horse,
<b>Applications:</b>	ELISA=1:500-1000IHC-P=1:400-800IHC-F=1:400-800ICC=1:100-500IF=1:100-500 (Paraffin sections need antigen repair) not yet tested in other applications. optimal dilutions/concentrations should be determined by the end user.
<b>Molecular weight:</b>	16kDa
<b>Cellular localization:</b>	cytoplasmic
<b>Form:</b>	Lyophilized or Liquid
<b>Concentration:</b>	1mg/ml
<b>immunogen:</b>	KLH conjugated synthetic peptide derived from human TRAPPCL2:21-80/140
<b>Lsotype:</b>	IgG
<b>Purification:</b>	affinity purified by Protein A
<b>Storage Buffer:</b>	0.01M TBS(pH7.4) with 1% BSA, 0.03% Proclin300 and 50% Glycerol.
<b>Storage:</b>	Store at -20 °C for one year. Avoid repeated freeze/thaw cycles. The lyophilized antibody is stable at room temperature for at least one month and for greater than a year when kept at -20°C. When reconstituted in sterile pH 7.4 0.01M PBS or diluent of antibody the antibody is stable for at least two weeks at 2-4 °C.
<b>PubMed:</b>	<a href="#">PubMed</a>
<b>Product Detail:</b>	<b>Function:</b> TRAPPC2L may play a role in vesicular transport from endoplasmic reticulum to Golgi. May play a role in vesicular transport from endoplasmic reticulum to Golgi.

**Subunit:**

Component of the multisubunit TRAPP (transport protein particle) complex, which includes at least TRAPPC2, TRAPPC2L, TRAPPC3, TRAPPC3L, TRAPPC4, TRAPPC5, TRAPPC8, TRAPPC9, TRAPPC10, TRAPPC11 and TRAPPC12. Interacts with the heterodimer TRAPPC3-TRAPPC6A. Interacts with TRAPPC6A.

**Subcellular Location:**

Cytoplasmic, Endoplasmic reticulum and Golgi Apparatus

**Tissue Specificity:**

Expressed in testis, liver, bladder, lung, spleen and brain, several cell lines and primary chondrocytes cell line.

**Similarity:**

Belongs to the TRAPP small subunits family. Sedlin subfamily.

**SWISS:**

Q9UL33

**Gene ID:**

51693

**Database links:**

[Entrez Gene: 51693](#) Human

[Entrez Gene: 59005](#) Mouse

[Entrez Gene: 292074](#) Rat

[Omim: 610970](#) Human

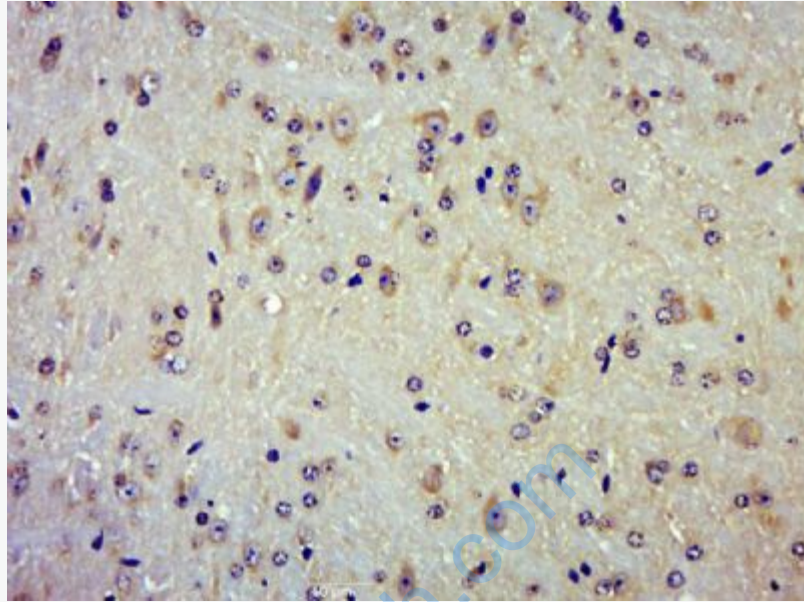
[SwissProt: Q9UL33](#) Human

[SwissProt: Q9JME7](#) Mouse

[SwissProt: B2RYU6](#) Rat

**Important Note:**

This product as supplied is intended for research use only, not for use in human, therapeutic or diagnostic applications.



**Picture:**

Paraformaldehyde-fixed, paraffin embedded (Mouse brain); Antigen retrieval by boiling in sodium citrate buffer (pH6.0) for 15min; Block endogenous peroxidase by 3% hydrogen peroxide for 20 minutes; Blocking buffer (normal goat serum) at 37°C for 30min; Antibody incubation with (TRAPPCL2) Polyclonal Antibody, Unconjugated (SL16590R) at 1:500 overnight at 4°C, followed by a conjugated secondary (sp-0023) for 20 minutes and DAB staining.