



## Rabbit Anti-IME1 antibody

SL16619R

<b>Product Name:</b>	IME1
<b>Chinese Name:</b>	减数分裂诱导蛋白IME1抗体
<b>Alias:</b>	Meiosis inducing protein; IME1 YEAST; YJR094C.
<b>Organism Species:</b>	Rabbit
<b>Clonality:</b>	Polyclonal
<b>React Species:</b>	Rat,Saccharomyces cerevisiae
<b>Applications:</b>	WB=1:500-2000ELISA=1:500-1000IHC-P=1:400-800IHC-F=1:400-800ICC=1:100-500IF=1:100-500 (Paraffin sections need antigen repair) not yet tested in other applications. optimal dilutions/concentrations should be determined by the end user.
<b>Molecular weight:</b>	42kDa
<b>Cellular localization:</b>	The nucleus
<b>Form:</b>	Lyophilized or Liquid
<b>Concentration:</b>	1mg/ml
<b>immunogen:</b>	KLH conjugated synthetic peptide derived from Saccharomyces cerevisiae IME1:301-360/360
<b>Lsotype:</b>	IgG
<b>Purification:</b>	affinity purified by Protein A
<b>Storage Buffer:</b>	0.01M TBS(pH7.4) with 1% BSA, 0.03% Proclin300 and 50% Glycerol.
<b>Storage:</b>	Store at -20 °C for one year. Avoid repeated freeze/thaw cycles. The lyophilized antibody is stable at room temperature for at least one month and for greater than a year when kept at -20°C. When reconstituted in sterile pH 7.4 0.01M PBS or diluent of antibody the antibody is stable for at least two weeks at 2-4 °C.
<b>PubMed:</b>	<a href="#">PubMed</a>
<b>Product Detail:</b>	Meiosis-inducing protein (IME1) is a master regulator of meiosis that is active only during meiotic events, activates transcription of early meiotic genes through interaction with Ume6p, degraded by the 26S proteasome following phosphorylation by Ime2p. IME1 is required for sporulation and for early sporulation-specific genes expression. It is a positive regulator of SME1/IME2 expression.

**Function:**

Transcription factor required for sporulation and for early sporulation-specific genes expression. Positive regulator of SME1/IME2 expression. Directly activates expression of SLZ1 during meiosis.

**Subunit:**

Interacts with UME6.

**Subcellular Location:**

Nuclear

**SWISS:**

P21190

**Gene ID:**

853556

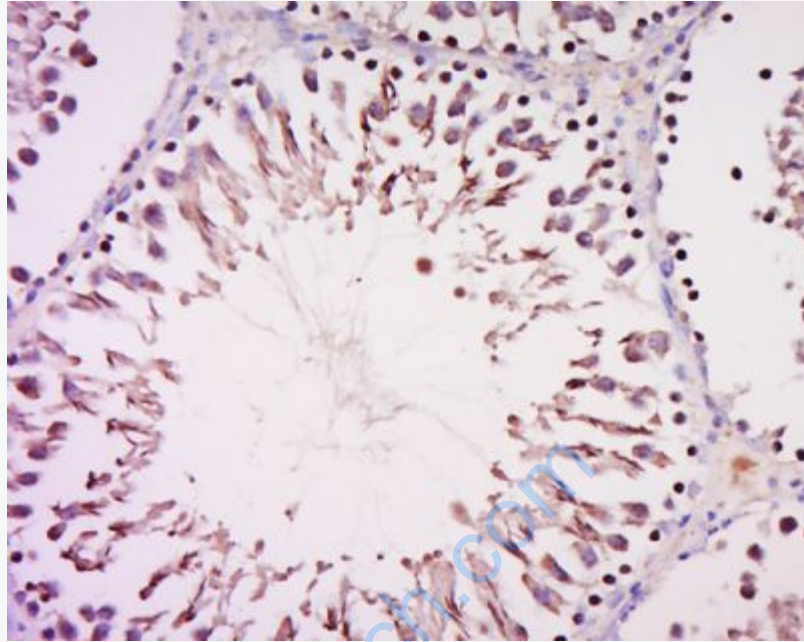
**Database links:**

[Entrez Gene: 853556](#) Saccharomyces cerevisiae

[SwissProt: P21190](#) Saccharomyces cerevisiae

**Important Note:**

This product as supplied is intended for research use only, not for use in human, therapeutic or diagnostic applications.



**Picture:**

Tissue/cell: Rat testis tissue; 4% Paraformaldehyde-fixed and paraffin-embedded;  
Antigen retrieval: citrate buffer ( 0.01M, pH 6.0 ), Boiling bathing for 15min; Block endogenous peroxidase by 3% Hydrogen peroxide for 30min; Blocking buffer (normal goat serum,C-0005) at 37°C for 20 min;  
Incubation: Anti-IME1 Polyclonal Antibody, Unconjugated(SL16619R) 1:500, overnight at 4°C, followed by conjugation to the secondary antibody(SP-0023) and DAB(C-0010) staining