



Rabbit Anti-INDOL1 antibody

SL16640R

Product Name:	INDOL1
Chinese Name:	吲哚1抗体
Alias:	3-dioxygenase 2; 3-dioxygenase-like protein 1; EC 1.13.11.; I23O2_HUMAN; IDO 2; IDO-2; Ido2; INDOL 1; Indoleamine 2; Indoleamine 2,3 dioxygenase 2; Indoleamine 2,3 dioxygenase like 1 protein; Indoleamine 2,3 dioxygenase like protein 1; Indoleamine pyrrole 2,3 dioxygenase like 1; Indoleamine pyrrole 2,3 dioxygenase like protein 1; Indoleamine-pyrrole 2.
Organism Species:	Rabbit
Clonality:	Polyclonal
React Species:	Human,
Applications:	ELISA=1:500-1000IHC-P=1:400-800IHC-F=1:400-800ICC=1:100-500IF=1:100-500 (Paraffin sections need antigen repair) not yet tested in other applications. optimal dilutions/concentrations should be determined by the end user.
Molecular weight:	45kDa
Cellular localization:	cytoplasmic
Form:	Lyophilized or Liquid
Concentration:	1mg/ml
immunogen:	KLH conjugated synthetic peptide derived from human INDOL1:251-350/407
Lsotype:	IgG
Purification:	affinity purified by Protein A
Storage Buffer:	0.01M TBS(pH7.4) with 1% BSA, 0.03% Proclin300 and 50% Glycerol.
Storage:	Store at -20 °C for one year. Avoid repeated freeze/thaw cycles. The lyophilized antibody is stable at room temperature for at least one month and for greater than a year when kept at -20°C. When reconstituted in sterile pH 7.4 0.01M PBS or diluent of antibody the antibody is stable for at least two weeks at 2-4 °C.
PubMed:	PubMed
Product Detail:	Along with the enzymes encoded by the INDO (MIM 147435) and TDO2 (MIM 191070) genes, the enzyme encoded by the INDOL1 gene metabolizes tryptophan in the kynurenine pathway (Ball et al., 2007 [PubMed 17499941]).[supplied by OMIM, Feb

2011]

Function:

Catalyzes the first and rate-limiting step in the kynurenine pathway of tryptophan catabolism.

Tissue Specificity:

Detected in liver, small intestine, spleen, placenta, thymus, lung, brain, kidney, and colon.

Similarity:

Belongs to the indoleamine 2,3-dioxygenase family.

SWISS:

Q6ZQW0

Gene ID:

612129

Database links:

[Entrez Gene: 169355](#) Human

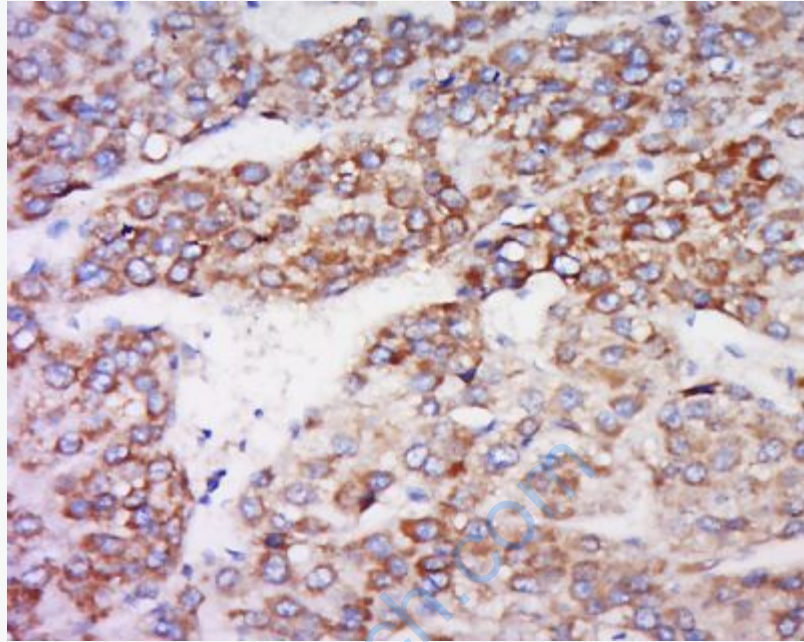
[Omim: 612129](#) Human

[SwissProt: Q6ZQW0](#) Human

[Unigene: 676257](#) Human

Important Note:

This product as supplied is intended for research use only, not for use in human, therapeutic or diagnostic applications.



Picture:

Tissue/cell: human liver cancer; 4% Paraformaldehyde-fixed and paraffin-embedded;

Antigen retrieval: citrate buffer (0.01M, pH 6.0), Boiling bathing for 15min; Block endogenous peroxidase by 3% Hydrogen peroxide for 30min; Blocking buffer (normal goat serum,C-0005) at 37°C for 20 min;

Incubation: Anti-INDOL1 Polyclonal Antibody, Unconjugated(SL16640R) 1:500, overnight at 4°C, followed by conjugation to the secondary antibody(SP-0023) and DAB(C-0010) staining