



Rabbit Anti-phospho-Transferrin Receptor (Ser24) antibody

SL16668R

Product Name:	phospho-Transferrin Receptor (Ser24)
Chinese Name:	磷酸化转铁蛋白受体抗体
Alias:	Transferrin Receptor (phospho S24); p-Transferrin Receptor (phospho S24); CD 71; CD71; CD71 antigen; OTTHUMP00000208523; OTTHUMP00000208524; OTTHUMP00000208525; p90; sTfR; T9; TFR 1; TFR; TFR1; TFR1_HUMAN; TFRC; TR; Transferrin receptor (p90 CD71); Transferrin Receptor Protein 1; Transferrin receptor protein 1, serum form; TRFR.
Organism Species:	Rabbit
Clonality:	Polyclonal
React Species:	Human,Mouse,Rat,Dog,Pig,Cow,Horse,
Applications:	ELISA=1:500-1000IHC-P=1:400-800IHC-F=1:400-800Flow-Cyt=1ug/TestICC=1:100-500IF=1:100-500 (Paraffin sections need antigen repair) not yet tested in other applications. optimal dilutions/concentrations should be determined by the end user.
Molecular weight:	85kDa
Cellular localization:	cytoplasmicThe cell membrane
Form:	Lyophilized or Liquid
Concentration:	1mg/ml
immunogen:	KLH conjugated synthesised phosphopeptide derived from human Transferrin Receptor around the phosphorylation site of Ser24:RF(p-S)LA
Lsotype:	IgG
Purification:	affinity purified by Protein A
Storage Buffer:	0.01M TBS(pH7.4) with 1% BSA, 0.03% Proclin300 and 50% Glycerol.
Storage:	Store at -20 °C for one year. Avoid repeated freeze/thaw cycles. The lyophilized antibody is stable at room temperature for at least one month and for greater than a year when kept at -20°C. When reconstituted in sterile pH 7.4 0.01M PBS or diluent of antibody the antibody is stable for at least two weeks at 2-4 °C.

PubMed:

[PubMed](#)

Cellular uptake of iron occurs via receptor mediated endocytosis of ligand occupied transferrin receptor into specialized endosomes. Endosomal acidification leads to iron release. The apotransferrin receptor complex is then recycled to the cell surface with a return to neutral pH and the concomitant loss of affinity of apotransferrin for its receptor. Transferrin receptor is necessary for development of erythrocytes and the nervous system. Useful in studies of dividing haematopoietic and tumour cell populations, and metabolic activity. A second ligand, the heditary hemochromatosis protein HFE, competes for binding with transferrin for an overlapping C terminal binding site. The antigen is present on most dividing cells, including normally cycling in vivo hematopoietic progenitor cells, mitogenically stimulated cells in vitro, some primary tumor cells and most proliferating cells in vitro.

Function:

Cellular uptake of iron occurs via receptor-mediated endocytosis of ligand-occupied transferrin receptor into specialized endosomes. Endosomal acidification leads to iron release. The apotransferrin-receptor complex is then recycled to the cell surface with a return to neutral pH and the concomitant loss of affinity of apotransferrin for its receptor. Transferrin receptor is necessary for development of erythrocytes and the nervous system (By similarity). A second ligand, the heditary hemochromatosis protein HFE, competes for binding with transferrin for an overlapping C-terminal binding site.

Subcellular Location:

Secreted and Cell membrane. Melanosome. Identified by mass spectrometry in melanosome fractions from stage I to stage IV.

Post-translational modifications:

N- and O-glycosylated, phosphorylated and palmitoylated. The serum form is only glycosylated. Proteolytically cleaved on Arg-100 to produce the soluble serum form (sTfR). Palmitoylated on both Cys-62 and Cys-67. Cys-62 seems to be the major site of palmitoylation.

Similarity:

Belongs to the peptidase M28 family. M28B subfamily. Contains 1 PA (protease associated) domain.

SWISS:

P02786

Gene ID:

7037

Database links:

[Entrez Gene: 7037](#) Human

Product Detail:

[Entrez Gene: 22042](#) Mouse

[Omim: 190010](#) Human

[SwissProt: P02786](#) Human

[SwissProt: Q62351](#) Mouse

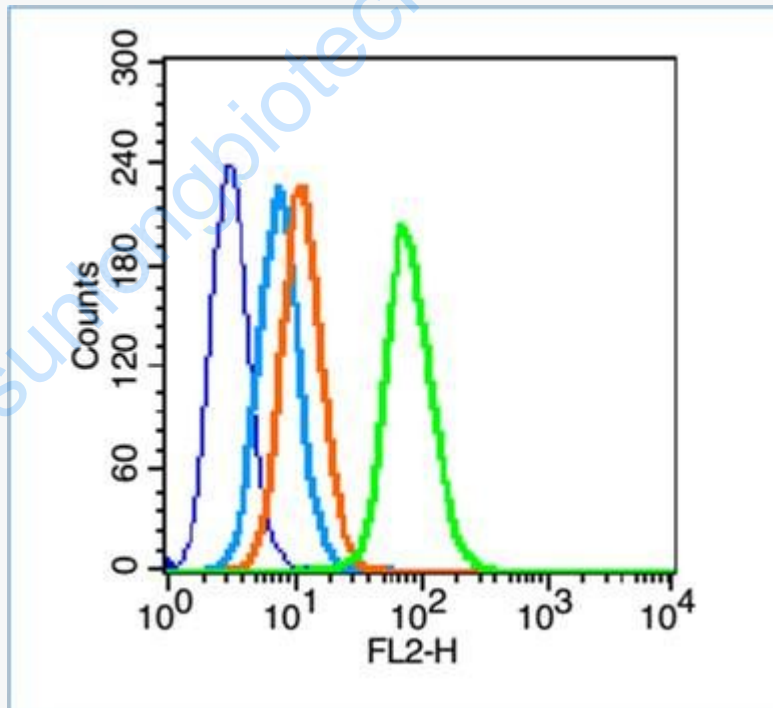
[Unigene: 529618](#) Human

[Unigene: 28683](#) Mouse

Important Note:

This product as supplied is intended for research use only, not for use in human, therapeutic or diagnostic applications.

Picture:



Blank control (blue line): HL60(fixed with 70% ethanol Overnight at 4°C).

Primary Antibody (green line): Rabbit Anti-phospho-Transferrin Receptor (Ser24) antibody (SL16668R),Dilution: 1µg /10⁶ cells;

Isotype Control Antibody (orange line): Rabbit IgG .

	Secondary Antibody (white blue line): Goat anti-rabbit IgG-PE, Dilution: 1 μ g /test.
--	---

www.sunlongbiotech.com