



## Rabbit Anti-INPP5A antibody

SL16670R

<b>Product Name:</b>	INPP5A
<b>Chinese Name:</b>	聚磷酸肌醇磷酸酶5A抗体
<b>Alias:</b>	43 kDa inositol polyphosphate 5-phosphatase; 5-trisphosphate 5-phosphatase; 5PTase; CTCL tumor antigen HD-CL-02; DKFZp434A1721; I5P1; I5P1_HUMAN; Inositol polyphosphate 5 phosphatase; inositol polyphosphate-5-phosphatase A; inositol trisphosphate-5-phosphatase; INPP5A; INPP5A inositol polyphosphate-5-phosphatase; InsP3 5-phosphatase; MGC116947; MGC116949; Type I inositol-1; type I inositol-1,4,5-trisphosphate 5-phosphatase.
<b>Organism Species:</b>	Rabbit
<b>Clonality:</b>	Polyclonal
<b>React Species:</b>	Human,Mouse,Rat,Chicken,Dog,Pig,Cow,Horse,
<b>Applications:</b>	WB=1:500-2000ELISA=1:500-1000 not yet tested in other applications. optimal dilutions/concentrations should be determined by the end user.
<b>Molecular weight:</b>	48kDa
<b>Cellular localization:</b>	The cell membrane
<b>Form:</b>	Lyophilized or Liquid
<b>Concentration:</b>	1mg/ml
<b>immunogen:</b>	KLH conjugated synthetic peptide derived from human INPP5A:31-130/412
<b>Lsotype:</b>	IgG
<b>Purification:</b>	affinity purified by Protein A
<b>Storage Buffer:</b>	0.01M TBS(pH7.4) with 1% BSA, 0.03% Proclin300 and 50% Glycerol.
<b>Storage:</b>	Store at -20 °C for one year. Avoid repeated freeze/thaw cycles. The lyophilized antibody is stable at room temperature for at least one month and for greater than a year when kept at -20°C. When reconstituted in sterile pH 7.4 0.01M PBS or diluent of antibody the antibody is stable for at least two weeks at 2-4 °C.
<b>PubMed:</b>	<a href="#">PubMed</a>
<b>Product Detail:</b>	The protein encoded by this gene is a membrane-associated type I inositol 1,4,5-trisphosphate (InsP3) 5-phosphatase. InsP3 5-phosphatases hydrolyze Ins(1,4,5)P3, which mobilizes intracellular calcium and acts as a second messenger mediating cell

responses to various stimulation. [provided by RefSeq, Jul 2008]

**Function:**

Major isoenzyme hydrolyzing the calcium-mobilizing second messenger Ins(1,4,5)P<sub>3</sub>, this is a signal-terminating reaction.

**Subcellular Location:**

Membrane.

**Tissue Specificity:**

Brain; high level in Purkinje cells.

**Similarity:**

Belongs to the inositol-1,4,5-trisphosphate 5-phosphatase type I family.

**SWISS:**

Q14642

**Gene ID:**

3632

**Database links:**

[Entrez Gene: 3632](#) Human

[Entrez Gene: 403937](#) Dog

[Entrez Gene: 212111](#) Mouse

[Entrez Gene: 365382](#) Rat

[Omim: 600106](#) Human

[SwissProt: Q29467](#) Dog

[SwissProt: Q14642](#) Human

[Unigene: 523360](#) Human

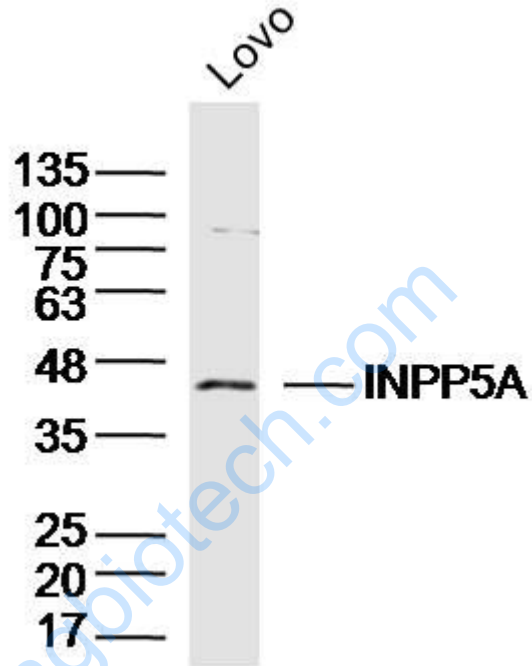
[Unigene: 715308](#) Human

[Unigene: 28308](#) Mouse

[Unigene: 8618](#) Rat

**Important Note:**

This product as supplied is intended for research use only, not for use in human, therapeutic or diagnostic applications.



Picture:

Sample: LOVO Cell (Human) Lysate at 40 ug

Primary: Anti-INPP5A (SL16670R) at 1/300 dilution

Secondary: IRDye800CW Goat Anti-Rabbit IgG at 1/20000 dilution

Predicted band size: 48 kD

Observed band size: 46 kD