



Rabbit Anti-INSL6 antibody

SL16674R

Product Name:	INSL6
Chinese Name:	胰岛素样肽6抗体
Alias:	Insl6; INSL6_HUMAN; Insulin-like peptide 6; Insulin-like peptide INSL6 A chain; Relaxin/insulin-like factor 1.
Organism Species:	Rabbit
Clonality:	Polyclonal
React Species:	Human,Rat,
Applications:	ELISA=1:500-1000IHC-P=1:400-800IHC-F=1:400-800ICC=1:100-500IF=1:100-500 (Paraffin sections need antigen repair) not yet tested in other applications. optimal dilutions/concentrations should be determined by the end user.
Molecular weight:	22kDa
Cellular localization:	Secretory protein
Form:	Lyophilized or Liquid
Concentration:	1mg/ml
immunogen:	KLH conjugated synthetic peptide derived from human INSL6:21-100/213
Lsotype:	IgG
Purification:	affinity purified by Protein A
Storage Buffer:	0.01M TBS(pH7.4) with 1% BSA, 0.03% Proclin300 and 50% Glycerol.
Storage:	Store at -20 °C for one year. Avoid repeated freeze/thaw cycles. The lyophilized antibody is stable at room temperature for at least one month and for greater than a year when kept at -20°C. When reconstituted in sterile pH 7.4 0.01M PBS or diluent of antibody the antibody is stable for at least two weeks at 2-4 °C.
PubMed:	PubMed
Product Detail:	The protein encoded by this gene contains a classical signature of the insulin superfamily and is significantly similar to relaxin and relaxin-like factor. This gene is preferentially expressed in testis. Its expression in testis is restricted to interstitial cells surrounding seminiferous tubules, which suggests a role in sperm development and fertilization. [provided by RefSeq, Jul 2008]

Function:

May have a role in sperm development and fertilization.

Subcellular Location:

Secreted.

Tissue Specificity:

Testis specific.

Similarity:

Belongs to the insulin family.

SWISS:

Q9Y581

Gene ID:

11172

Database links:

[Entrez Gene: 11172](#) Human

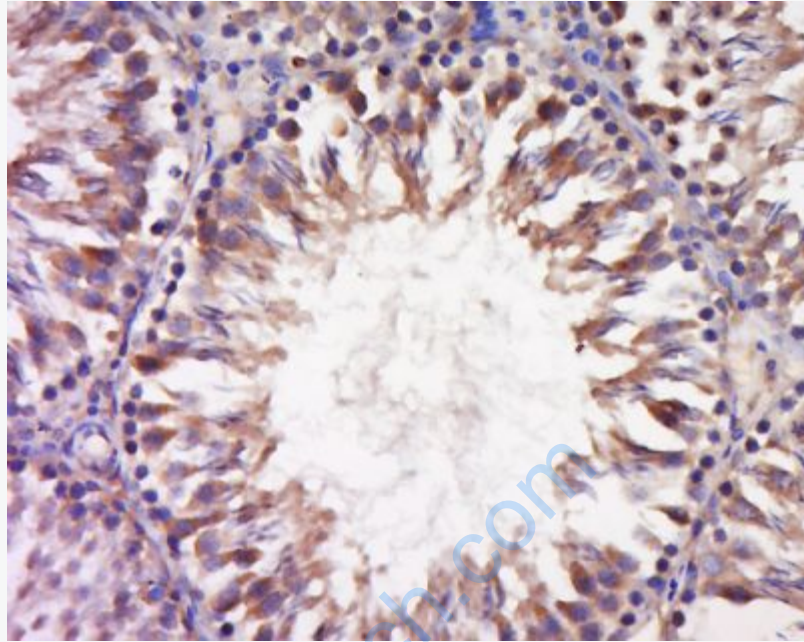
[Omim: 606414](#) Human

[SwissProt: Q9Y581](#) Human

[Unigene: 632648](#) Human

Important Note:

This product as supplied is intended for research use only, not for use in human, therapeutic or diagnostic applications.



Picture:

Tissue/cell: Rat testis tissue; 4% Paraformaldehyde-fixed and paraffin-embedded;
Antigen retrieval: citrate buffer (0.01M, pH 6.0), Boiling bathing for 15min; Block endogenous peroxidase by 3% Hydrogen peroxide for 30min; Blocking buffer (normal goat serum,C-0005) at 37°C for 20 min;
Incubation: Anti-INSL6 Polyclonal Antibody, Unconjugated(SL16674R) 1:500, overnight at 4°C, followed by conjugation to the secondary antibody(SP-0023) and DAB(C-0010) staining