



Rabbit Anti-INT11/CPSF3L antibody

SL16677R

| | |
|-------------------------------|--|
| Product Name: | INT11/CPSF3L |
| Chinese Name: | INT11蛋白抗体 |
| Alias: | 2410006F12Rik; AU044035; Cleavage and polyadenylation specific factor 3 like; Cleavage and polyadenylation-specific factor 3-like protein; CPSF3 like protein; CPSF3-like protein; CPSF3L; CPSF73L; FLJ13294; FLJ20542; Human integrator complex subunit 11; INT 11; Int11; INT11_HUMAN; Integrator complex subunit 11; INTS 11; INTS11; MGC124975; OTTHUMP00000044092; Protein related to CPSF subunits of 68 kDa; RC 68; RC 68, related; RC-68; RC68; Related to CPSF subunits 68 kDa; Related to CPSF subunits, 68 kDa protein; RGD1306841; RP23 242K15.19. |
| Organism Species: | Rabbit |
| Clonality: | Polyclonal |
| React Species: | Human,Mouse,Rat,Horse,Zebrafish,Rhesus monkey, Gorilla, Opossum, Orangutan, Elephant |
| Applications: | WB=1:500-2000ELISA=1:500-1000IHC-P=1:400-800IHC-F=1:400-800ICC=1:100-500IF=1:100-500 (Paraffin sections need antigen repair) not yet tested in other applications. optimal dilutions/concentrations should be determined by the end user. |
| Molecular weight: | 68kDa |
| Cellular localization: | The nucleuscytoplasmic |
| Form: | Lyophilized or Liquid |
| Concentration: | 1mg/ml |
| immunogen: | KLH conjugated synthetic peptide derived from human INT11/CPSF3L:151-250/600 |
| Lsotype: | IgG |
| Purification: | affinity purified by Protein A |
| Storage Buffer: | 0.01M TBS(pH7.4) with 1% BSA, 0.03% Proclin300 and 50% Glycerol. |
| Storage: | Store at -20 °C for one year. Avoid repeated freeze/thaw cycles. The lyophilized antibody is stable at room temperature for at least one month and for greater than a year when kept at -20°C. When reconstituted in sterile pH 7.4 0.01M PBS or diluent of antibody the antibody is stable for at least two weeks at 2-4 °C. |
| PubMed: | PubMed |

The Integrator complex contains at least 12 subunits and associates with the C-terminal domain of RNA polymerase II large subunit (POLR2A; MIM 180660) and mediates the 3-prime end processing of small nuclear RNAs U1 (RNU1; MIM 180680) and U2 (RNU2; MIM 180690). INTS11, or CPSF3L, is the catalytic subunit of the Integrator complex (Baillat et al., 2005 [PubMed 16239144]).[supplied by OMIM, Mar 2008]

Function:

Catalytic component of the Integrator complex, a complex involved in the small nuclear RNAs (snRNA) U1 and U2 transcription and in their 3'-box-dependent processing. The Integrator complex is associated with the C-terminal domain (CTD) of RNA polymerase II largest subunit (POLR2A) and is recruited to the U1 and U2 snRNAs genes. Mediates the snRNAs 3' cleavage.

Subunit:

Belongs to the multiprotein complex Integrator, at least composed of INTS1, INTS2, INTS3, INTS4, INTS5, INTS6, INTS7, INTS8, INTS9/RC74, INTS10, CPSF3L/INTS11 and INTS12.

Subcellular Location:

Nucleus. Cytoplasm.

Tissue Specificity:

Belongs to the metallo-beta-lactamase superfamily. RNA-metabolizing metallo-beta-lactamase-like family. INTS11 subfamily.

Similarity:

Belongs to the metallo-beta-lactamase superfamily. RNA-metabolizing metallo-beta-lactamase-like family. INTS11 subfamily. {ECO:0000305}.

SWISS:

Q5TA45

Gene ID:

54973

Database links:

[Entrez Gene: 54973](#) Human

[Entrez Gene: 71957](#) Mouse

[Omid: 611354](#) Human

[SwissProt: Q5TA45](#) Human

[SwissProt: Q9CWS4](#) Mouse

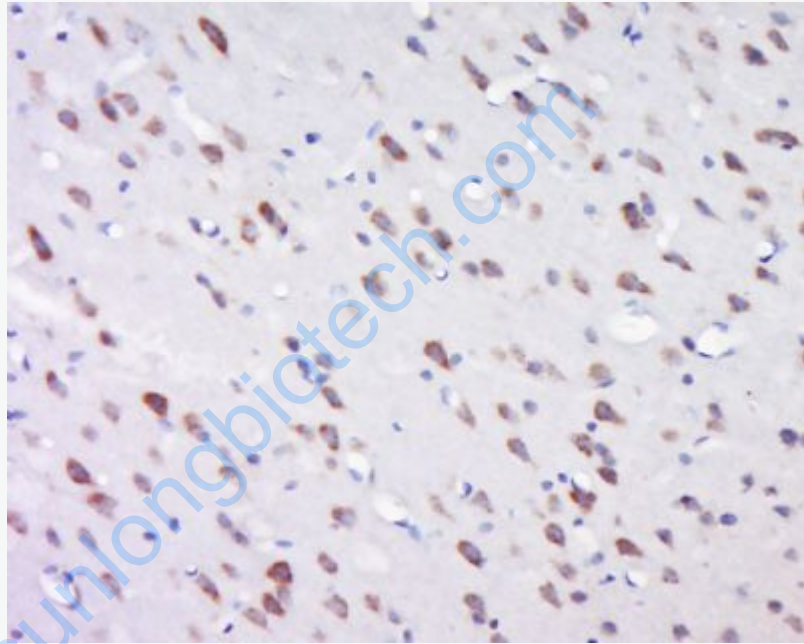
Product Detail:

[Unigene: 6449](#) Human

[Unigene: 475640](#) Mouse

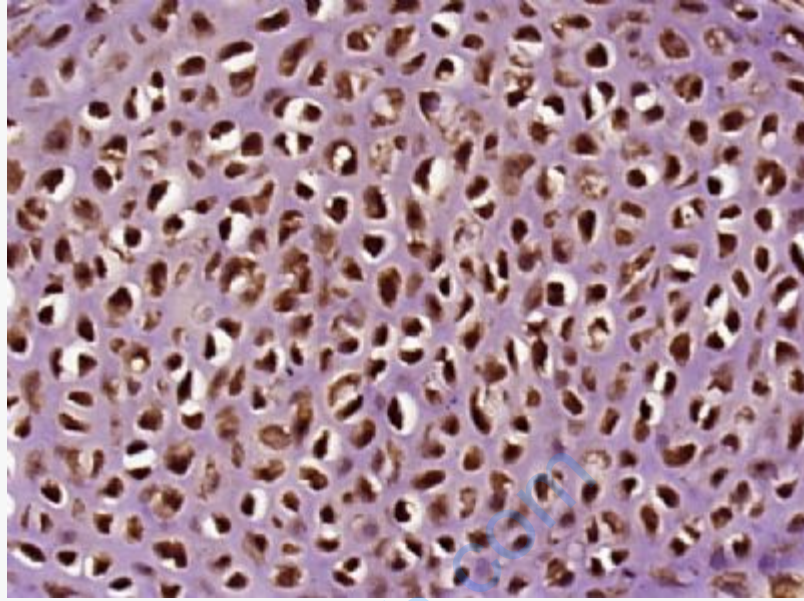
Important Note:

This product as supplied is intended for research use only, not for use in human, therapeutic or diagnostic applications.

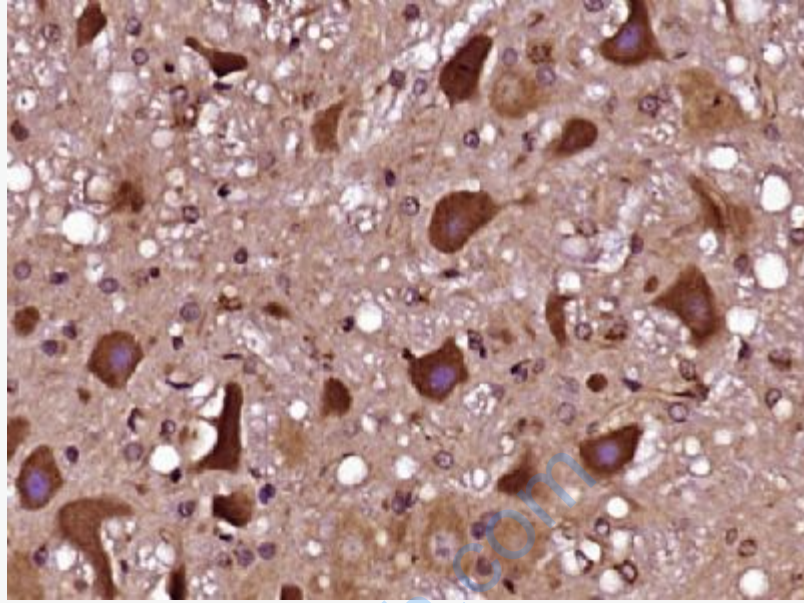


Picture:

Tissue/cell: rat brain tissue; 4% Paraformaldehyde-fixed and paraffin-embedded;
Antigen retrieval: citrate buffer (0.01M, pH 6.0), Boiling bathing for 15min; Block endogenous peroxidase by 3% Hydrogen peroxide for 30min; Blocking buffer (normal goat serum,C-0005) at 37°C for 20 min;
Incubation: Anti-INT11/CPSF3L Polyclonal Antibody, Unconjugated(SL16677R) 1:500, overnight at 4°C, followed by conjugation to the secondary antibody(SP-0023) and DAB(C-0010) staining



Paraformaldehyde-fixed, paraffin embedded (Mouse embryo); Antigen retrieval by boiling in sodium citrate buffer (pH6.0) for 15min; Block endogenous peroxidase by 3% hydrogen peroxide for 20 minutes; Blocking buffer (normal goat serum) at 37°C for 30min; Antibody incubation with (INT11/CPSF3L) Polyclonal Antibody, Unconjugated (SL16677R) at 1:400 overnight at 4°C, followed by operating according to SP Kit(Rabbit) (sp-0023) instructions and DAB staining.



Paraformaldehyde-fixed, paraffin embedded (Rat brain); Antigen retrieval by boiling in sodium citrate buffer (pH6.0) for 15min; Block endogenous peroxidase by 3% hydrogen peroxide for 20 minutes; Blocking buffer (normal goat serum) at 37°C for 30min; Antibody incubation with (INT11/CPSF3L) Polyclonal Antibody, Unconjugated (SL16677R) at 1:400 overnight at 4°C, followed by operating according to SP Kit(Rabbit) (sp-0023) instructions and DAB staining.