



## Rabbit Anti-IRF2BP2 antibody

SL16701R

<b>Product Name:</b>	IRF2BP2
<b>Chinese Name:</b>	Interferon调节因子2Binding protein2抗体
<b>Alias:</b>	I2BP2_HUMAN; Interferon regulatory factor 2 binding protein 2; Interferon regulatory factor 2-binding protein 2; IRF-2-binding protein 2; IRF-2BP2; IRF2 binding protein 2; IRF2BP2.
<b>Organism Species:</b>	Rabbit
<b>Clonality:</b>	Polyclonal
<b>React Species:</b>	Human,Cow,Horse,Rabbit,
<b>Applications:</b>	WB=1:500-2000ELISA=1:500-1000IHC-P=1:400-800IHC-F=1:400-800ICC=1:100-500IF=1:100-500 (Paraffin sections need antigen repair) not yet tested in other applications. optimal dilutions/concentrations should be determined by the end user.
<b>Molecular weight:</b>	61kDa
<b>Cellular localization:</b>	The nucleus
<b>Form:</b>	Lyophilized or Liquid
<b>Concentration:</b>	1mg/ml
<b>immunogen:</b>	KLH conjugated synthetic peptide derived from human IRF2BP2:301-400/587
<b>Lsotype:</b>	IgG
<b>Purification:</b>	affinity purified by Protein A
<b>Storage Buffer:</b>	0.01M TBS(pH7.4) with 1% BSA, 0.03% Proclin300 and 50% Glycerol.
<b>Storage:</b>	Store at -20 °C for one year. Avoid repeated freeze/thaw cycles. The lyophilized antibody is stable at room temperature for at least one month and for greater than a year when kept at -20°C. When reconstituted in sterile pH 7.4 0.01M PBS or diluent of antibody the antibody is stable for at least two weeks at 2-4 °C.
<b>PubMed:</b>	<a href="#">PubMed</a>
<b>Product Detail:</b>	This gene encodes an interferon regulatory factor-2 (IRF2) binding protein that interacts with the C-terminal transcriptional repression domain of IRF2. Alternative splicing results in multiple transcript variants encoding distinct isoforms. [provided by RefSeq, Jul 2008]

**Function:**

Acts as a transcriptional repressor. Acts as a transcriptional corepressor in a IRF2-dependent manner. This repression is not mediated at least in part by histone deacetylase activities.

**Subunit:**

Interacts with IRF2. Part of a corepressor complex containing IRF2 and IRF2BP1. Interacts with VGLL4.

**Subcellular Location:**

Nucleus.

**Post-translational modifications:**

Phosphorylation at Ser-360 is required for nuclear targeting.

**Similarity:**

Belongs to the IRF2BP family.

**SWISS:**

Q7Z5L9

**Gene ID:**

359948

**Database links:**

[Entrez Gene: 359948](#) Human

[Entrez Gene: 270110](#) Mouse

[Omim: 615332](#) Human

[SwissProt: Q7Z5L9](#) Human

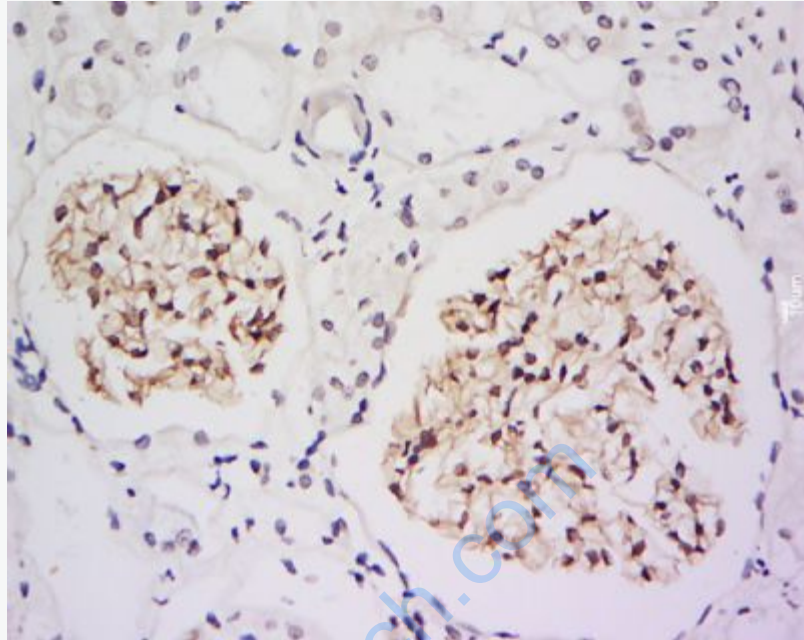
[SwissProt: E9Q1P8](#) Mouse

[Unigene: 350268](#) Human

[Unigene: 491125](#) Mouse

**Important Note:**

This product as supplied is intended for research use only, not for use in human, therapeutic or diagnostic applications.



**Picture:**

Tissue/cell: human kidney tissue; 4% Paraformaldehyde-fixed and paraffin-embedded;

Antigen retrieval: citrate buffer ( 0.01M, pH 6.0 ), Boiling bathing for 15min; Block endogenous peroxidase by 3% Hydrogen peroxide for 30min; Blocking buffer (normal goat serum,C-0005) at 37°C for 20 min;

Incubation: Anti-IRF2BP2 Polyclonal Antibody, Unconjugated(SL16701R) 1:200, overnight at 4°C, followed by conjugation to the secondary antibody(SP-0023) and DAB(C-0010) staining