



Rabbit Anti-phospho-KIF22 (Ser427) antibody

SL17050R

Product Name:	phospho-KIF22 (Ser427)
Chinese Name:	磷酸化驱动蛋白家族成员22抗体
Alias:	KIF22 (phospho S427); p-KIF22 (phospho S427); p-KID (Ser 427); A 328A3.2; KID; KIF 22; kif22; KIF22_HUMAN; Kinesin family member 22; Kinesin like 4; Kinesin like DNA binding protein; Kinesin like DNA binding protein pseudogene; Kinesin like protein 4; Kinesin like protein KIF22; Kinesin-like DNA-binding protein; Kinesin-like protein 4; Kinesin-like protein KIF22; KNSL 4; KNSL4; OBP 1; OBP 2; OBP; OBP1; OBP2; Origin of plasmid DNA replication binding protein; OriP binding protein; OTTHUMP00000123406.
Organism Species:	Rabbit
Clonality:	Polyclonal
React Species:	Human,Dog,Cow,Horse,Sheep,
Applications:	ELISA=1:500-1000IHC-P=1:400-800IHC-F=1:400-800ICC=1:100-500IF=1:100-500 (Paraffin sections need antigen repair) not yet tested in other applications. optimal dilutions/concentrations should be determined by the end user.
Molecular weight:	73kDa
Cellular localization:	The nucleuscytoplasmic
Form:	Lyophilized or Liquid
Concentration:	1mg/ml
immunogen:	KLH conjugated Synthesised phosphopeptide derived from human KIF22 around the phosphorylation site of Ser427:KL(p-S)PL
Lsotype:	IgG
Purification:	affinity purified by Protein A
Storage Buffer:	0.01M TBS(pH7.4) with 1% BSA, 0.03% Proclin300 and 50% Glycerol.
Storage:	Store at -20 °C for one year. Avoid repeated freeze/thaw cycles. The lyophilized antibody is stable at room temperature for at least one month and for greater than a year when kept at -20°C. When reconstituted in sterile pH 7.4 0.01M PBS or diluent of antibody the antibody is stable for at least two weeks at 2-4 °C.

PubMed:[PubMed](#)

The protein encoded by this gene is a member of the kinesin-like protein family. The family members are microtubule-dependent molecular motors that transport organelles within cells and move chromosomes during cell division. The C-terminal half of this protein has been shown to bind DNA. Studies with the *Xenopus* homolog suggests its essential role in metaphase chromosome alignment and maintenance. Alternatively spliced transcript variants encoding different isoforms have been found for this gene. [provided by RefSeq, Jan 2012]

Function:

Kinesin family that is involved in spindle formation and the movements of chromosomes during mitosis and meiosis. Binds to microtubules and to DNA.

Subcellular Location:

Nucleus. Cytoplasm > cytoskeleton.

Post-translational modifications:

Ubiquitinated; mediated by SIAH1 and leading to its subsequent proteasomal degradation.

Phosphorylated upon DNA damage, probably by ATM or ATR.

Similarity:

Belongs to the kinesin-like protein family.

Contains 1 kinesin-motor domain.

Product Detail:**SWISS:**

Q14807

Gene ID:

3835

Database links:

[Entrez Gene: 3835](#) Human

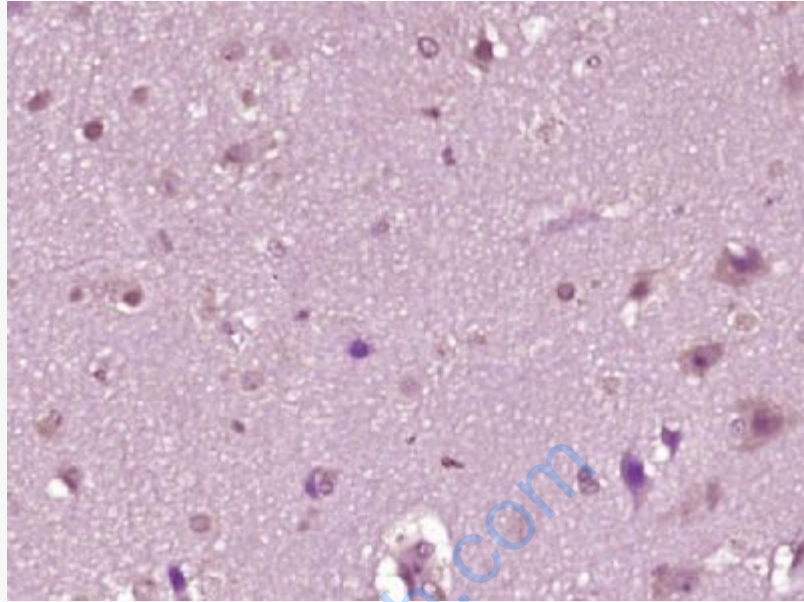
[Omim: 603213](#) Human

[SwissProt: Q14807](#) Human

[Unigene: 612151](#) Human

Important Note:

This product as supplied is intended for research use only, not for use in human, therapeutic or diagnostic applications.



Picture:

Paraformaldehyde-fixed, paraffin embedded (Human brain glioma); Antigen retrieval by boiling in sodium citrate buffer (pH6.0) for 15min; Block endogenous peroxidase by 3% hydrogen peroxide for 20 minutes; Blocking buffer (normal goat serum) at 37°C for 30min; Antibody incubation with (phospho-KIF22 (Ser427)) Polyclonal Antibody, Unconjugated (SL17050R) at 1:400 overnight at 4°C, followed by operating according to SP Kit(Rabbit) (sp-0023) instructions and DAB staining.