



Rabbit Anti-TOM1L2 antibody

SL17223R

Product Name:	TOM1L2
Chinese Name:	TOM1L2蛋白抗体
Alias:	FLJ32746; Srebfl1; Target of Myb-like protein 2; Target of myb1 like 2; Target of myb1-like 2 (chicken); TM1L2_HUMAN; TOM1; TOM1-like protein 2; TOM1L 2; Tom1l2.
Organism Species:	Rabbit
Clonality:	Polyclonal
React Species:	Human,Mouse,Rat,Dog,Horse,Rabbit,
Applications:	WB=1:500-2000ELISA=1:500-1000IHC-P=1:400-800IHC-F=1:400-800ICC=1:100-500IF=1:100-500 (Paraffin sections need antigen repair) not yet tested in other applications. optimal dilutions/concentrations should be determined by the end user.
Molecular weight:	56kDa
Cellular localization:	Extracellular matrixSecretory protein
Form:	Lyophilized or Liquid
Concentration:	1mg/ml
immunogen:	KLH conjugated synthetic peptide derived from human TOM1L2:331-430/507
Lsotype:	IgG
Purification:	affinity purified by Protein A
Storage Buffer:	0.01M TBS(pH7.4) with 1% BSA, 0.03% Proclin300 and 50% Glycerol.
Storage:	Store at -20 °C for one year. Avoid repeated freeze/thaw cycles. The lyophilized antibody is stable at room temperature for at least one month and for greater than a year when kept at -20°C. When reconstituted in sterile pH 7.4 0.01M PBS or diluent of antibody the antibody is stable for at least two weeks at 2-4 °C.
PubMed:	PubMed
Product Detail:	Probable role in protein transport. May regulate growth factor-induced mitogenic signaling. Tissue Specificity: Ubiquitously expressed with higher expression in heart and skeletal muscle.

Similarity:

Belongs to the TOM1 family.

Contains 1 GAT domain.

Contains 1 VHS domain.

SWISS:

Q6ZVM7

Gene ID:

146691

Database links:

[Entrez Gene: 146691](#) Human

[SwissProt: Q6ZVM7](#) Human

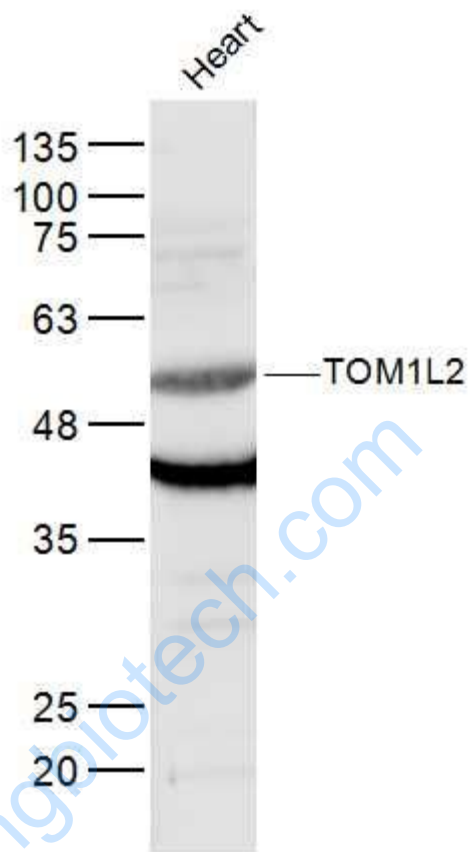
[Unigene: 462379](#) Human

Important Note:

This product as supplied is intended for research use only, not for use in human, therapeutic or diagnostic applications.

www.sunlongbiotech.com

Picture:



Sample:

Heart (Mouse) Lysate at 40 ug

Primary: Anti-TOM1L2 (SL17223R) at 1/300 dilution

Secondary: IRDye800CW Goat Anti-Rabbit IgG at 1/20000 dilution

Predicted band size: 56 kD

Observed band size: 56 kD