



Rabbit Anti-TOMM22 antibody

SL17225R

Product Name:	TOMM22
Chinese Name:	TOMM22蛋白抗体
Alias:	1C9 2; hTom 22; hTom22; Mitochondrial import receptor subunit TOM 22 homolog; Mitochondrial import receptor subunit TOM22 homolog; Mitochondrial import receptor Tom 22; Mitochondrial import receptor Tom22; MST 065; MST065; MSTP 065; MSTP065; TOM 22; TOM22_HUMAN; TOM22; TOMM 22; Translocase of outer membrane 22 kDa subunit homolog; Translocase of outer mitochondrial membrane 22 homolog.
Organism Species:	Rabbit
Clonality:	Polyclonal
React Species:	Human,Mouse,Rat,Dog,Pig,Cow,Horse,Sheep,
Applications:	ELISA=1:500-1000IHC-P=1:400-800IHC-F=1:400-800ICC=1:100-500IF=1:100-500 (Paraffin sections need antigen repair) not yet tested in other applications. optimal dilutions/concentrations should be determined by the end user.
Molecular weight:	15kDa
Cellular localization:	cytoplasmic
Form:	Lyophilized or Liquid
Concentration:	1mg/ml
immunogen:	KLH conjugated synthetic peptide derived from human TOMM22:51-142/142
Lsotype:	IgG
Purification:	affinity purified by Protein A
Storage Buffer:	0.01M TBS(pH7.4) with 1% BSA, 0.03% Proclin300 and 50% Glycerol.
Storage:	Store at -20 °C for one year. Avoid repeated freeze/thaw cycles. The lyophilized antibody is stable at room temperature for at least one month and for greater than a year when kept at -20°C. When reconstituted in sterile pH 7.4 0.01M PBS or diluent of antibody the antibody is stable for at least two weeks at 2-4 °C.
PubMed:	PubMed
Product Detail:	The protein encoded by this gene is an integral membrane protein of the mitochondrial outer membrane. The encoded protein interacts with TOMM20 and TOMM40, and

forms a complex with several other proteins to import cytosolic preproteins into the mitochondrion. [provided by RefSeq, Jul 2008]

Function:

Central receptor component of the translocase of the outer membrane of mitochondria (TOM complex) responsible for the recognition and translocation of cytosolically synthesized mitochondrial preproteins. Together with the peripheral receptor TOM20 functions as the transit peptide receptor and facilitates the movement of preproteins into the translocation pore.

Subunit:

Forms part of the preprotein translocase complex of the outer mitochondrial membrane (TOM complex) which consists of at least 7 different proteins (TOMM5, TOMM6, TOMM7, TOMM20, TOMM22, TOMM40 and TOMM70). Interacts with TOMM40. Interacts with PPP2R2B (By similarity).

Subcellular Location:

Mitochondrion outer membrane; Single-pass membrane protein

Tissue Specificity:

Ubiquitous.

Similarity:

Belongs to the Tom22 family.

SWISS:

Q9NS69

Gene ID:

56993

Database links:

[Entrez Gene: 56993](#)Human

[Entrez Gene: 223696](#)Mouse

[Entrez Gene: 300075](#)Rat

[Omim: 607046](#)Human

[SwissProt: Q9NS69](#)Human

[SwissProt: Q9CPQ3](#)Mouse

[SwissProt: Q75Q41](#)Rat

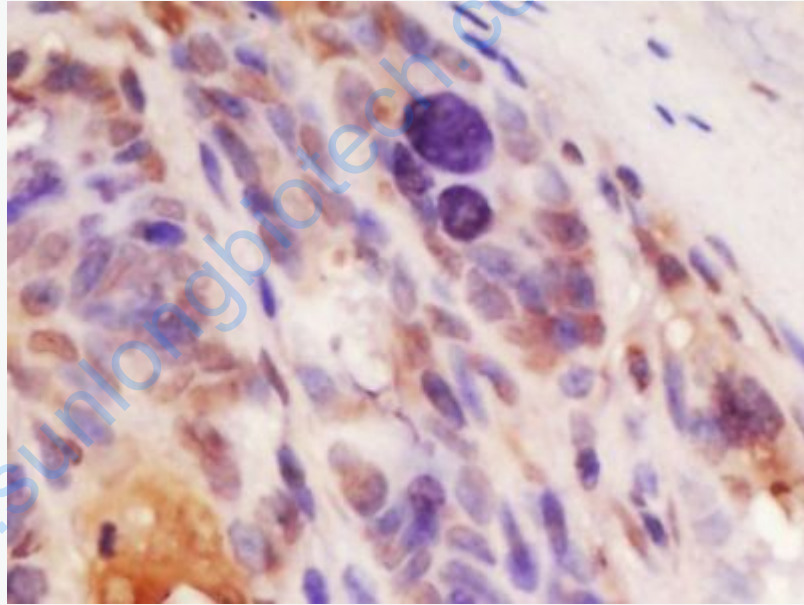
[Unigene: 285005](#)Human

[Unigene: 246435](#)Mouse

Important Note:

This product as supplied is intended for research use only, not for use in human, therapeutic or diagnostic applications.

Picture:



Tissue/cell: rat colon tissue; 4% Paraformaldehyde-fixed and paraffin-embedded;

Antigen retrieval: citrate buffer (0.01M, pH 6.0), Boiling bathing for 15min; Block endogenous peroxidase by 3% Hydrogen peroxide for 30min; Blocking buffer (normal goat serum,C-0005) at 37°C for 20 min;

Incubation: Anti-TOMM22 Polyclonal Antibody, Unconjugated(SL17225R) 1:200, overnight at 4°C, followed by conjugation to the secondary antibody(SP-0023) and

	DAB(C-0010) staining
--	----------------------

www.sunlongbiotech.com