



Rabbit Anti-SGK196 antibody

SL17315R

Product Name:	SGK196
Chinese Name:	SGK196蛋白抗体
Alias:	FLJ23356; MDDGA12; Probable inactive protein kinase-like protein SgK196; Protein kinase like protein SgK196; Protein kinase-like protein SgK196; SGK196; Sugen kinase 196.
Organism Species:	Rabbit
Clonality:	Polyclonal
React Species:	Human,Mouse,Rat,
Applications:	WB=1:500-2000ELISA=1:500-1000IHC-P=1:400-800IHC-F=1:400-800ICC=1:100-500IF=1:100-500 (Paraffin sections need antigen repair) not yet tested in other applications. optimal dilutions/concentrations should be determined by the end user.
Molecular weight:	40kDa
Cellular localization:	The cell membrane
Form:	Lyophilized or Liquid
Concentration:	1mg/ml
immunogen:	KLH conjugated synthetic peptide derived from human SGK196:151-250/350
Lsotype:	IgG
Purification:	affinity purified by Protein A
Storage Buffer:	0.01M TBS(pH7.4) with 1% BSA, 0.03% Proclin300 and 50% Glycerol.
Storage:	Store at -20 °C for one year. Avoid repeated freeze/thaw cycles. The lyophilized antibody is stable at room temperature for at least one month and for greater than a year when kept at -20°C. When reconstituted in sterile pH 7.4 0.01M PBS or diluent of antibody the antibody is stable for at least two weeks at 2-4 °C.
PubMed:	PubMed
Product Detail:	This gene encodes a protein that may be involved in the presentation of the laminin-binding O-linked carbohydrate chain of alpha-dystroglycan (a-DG), which forms transmembrane linkages between the extracellular matrix and the exoskeleton. Some pathogens use this O-linked carbohydrate unit for host entry. Loss of function compound heterozygous mutations in this gene were found in a human patient affected

by the Walker-Warburg syndrome (WWS) phenotype. Mice lacking this gene contain misplaced neurons (heterotopia) in some regions of the brain, possibly from defects in neuronal migration. Alternative splicing of this gene results in multiple transcript variants. [provided by RefSeq, May 2013]

Function:

Belongs to the protein kinase superfamily. Ser/Thr protein kinase family. STKL subfamily.

Subcellular Location:

Cell Membrane

SWISS:

Q9H5K3

Gene ID:

615247

Database links:

[Entrez Gene: 84197](#) Human

[Entrez Gene: 306549](#) Rat

[Omim: 615247](#) Human

[SwissProt: Q9H5K3](#) Human

[SwissProt: Q3TUA9](#) Mouse

[SwissProt: Q4V8A9](#) Rat

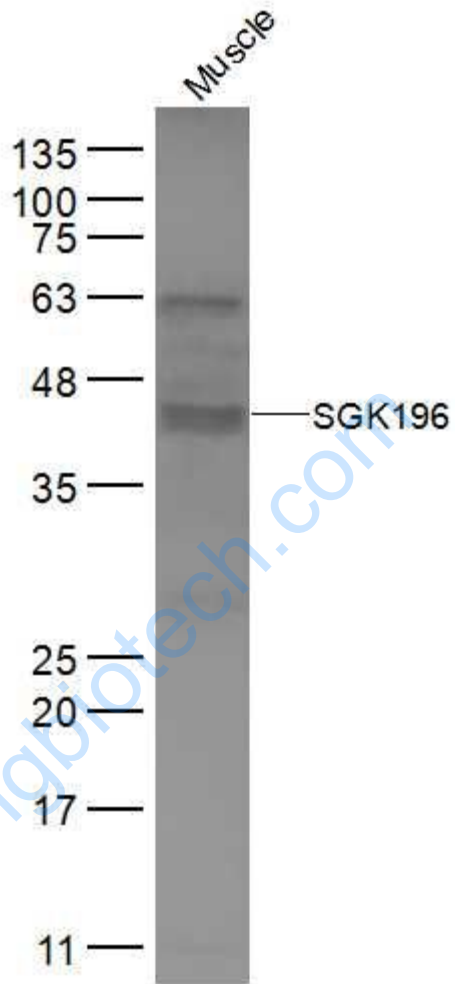
[Unigene: 491646](#) Human

[Unigene: 39247](#) Rat

Important Note:

This product as supplied is intended for research use only, not for use in human, therapeutic or diagnostic applications.

Picture:



Sample:

Muscle (Mouse) Lysate at 40 ug

Primary: Anti-SGK196 (SL17315R) at 1/300 dilution

Secondary: IRDye800CW Goat Anti-Rabbit IgG at 1/20000 dilution

Predicted band size: 40 kD

Observed band size: 40 kD