



Rabbit Anti-SGK2 antibody

SL17316R

Product Name:	SGK2
Chinese Name:	丝氨酸/苏氨酸蛋白激酶SGK2抗体
Alias:	dJ138B7.2; EC 2.7.11.1; H SGK2; HSGK2; Serine/threonine protein kinase SGK2; Serine/threonine-protein kinase Sgk2; Serum/glucocorticoid regulated kinase 2; Serum/glucocorticoid-regulated kinase 2; SGK2; SGK2 HUMAN.
Organism Species:	Rabbit
Clonality:	Polyclonal
React Species:	Human,Mouse,Rat,Cow,Horse,Rabbit,Sheep,
Applications:	WB=1:500-2000ELISA=1:500-1000IHC-P=1:400-800IHC-F=1:400-800ICC=1:100-500IF=1:100-500 (Paraffin sections need antigen repair) not yet tested in other applications. optimal dilutions/concentrations should be determined by the end user.
Molecular weight:	48kDa
Cellular localization:	The nucleus
Form:	Lyophilized or Liquid
Concentration:	1mg/ml
immunogen:	KLH conjugated synthetic peptide derived from human SGK2:301-400/427
Lsotype:	IgG
Purification:	affinity purified by Protein A
Storage Buffer:	0.01M TBS(pH7.4) with 1% BSA, 0.03% Proclin300 and 50% Glycerol.
Storage:	Store at -20 °C for one year. Avoid repeated freeze/thaw cycles. The lyophilized antibody is stable at room temperature for at least one month and for greater than a year when kept at -20°C. When reconstituted in sterile pH 7.4 0.01M PBS or diluent of antibody the antibody is stable for at least two weeks at 2-4 °C.
PubMed:	PubMed
Product Detail:	This gene encodes a serine/threonine protein kinase. Although this gene product is similar to serum- and glucocorticoid-induced protein kinase (SGK), this gene is not induced by serum or glucocorticoids. This gene is induced in response to signals that activate phosphatidylinositol 3-kinase, which is also true for SGK. Alternative splicing results in multiple transcript variants. [provided by RefSeq, Nov 2010]

Function:

Involved in the activation of potassium channels.

Tissue Specificity:

Highly expressed in liver, kidney and pancreas, and at lower levels in brain.

Similarity:

Belongs to the protein kinase superfamily.

AGC Ser/Thr protein kinase family.

Contains 1 AGC-kinase C-terminal domain.

Contains 1 protein kinase domain.

SWISS:

Q9HBY8

Gene ID:

10110

Database links:

[Entrez Gene: 10110](#) Human

[Omir: 607589](#) Human

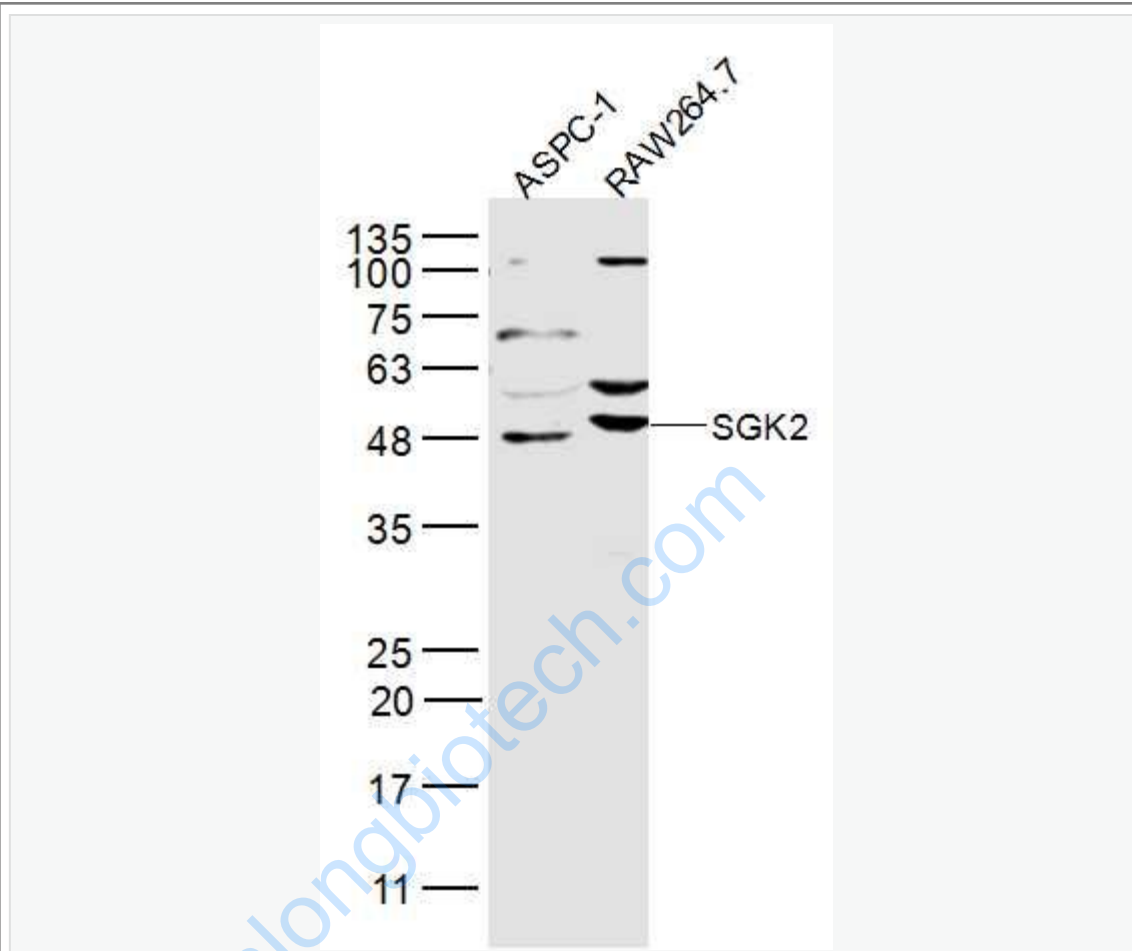
[SwissProt: Q9HBY8](#) Human

[Unigene: 300863](#) Human

Important Note:

This product as supplied is intended for research use only, not for use in human, therapeutic or diagnostic applications.

Picture:



Sample:

ASPC-1(Human) Cell Lysate at 30 ug

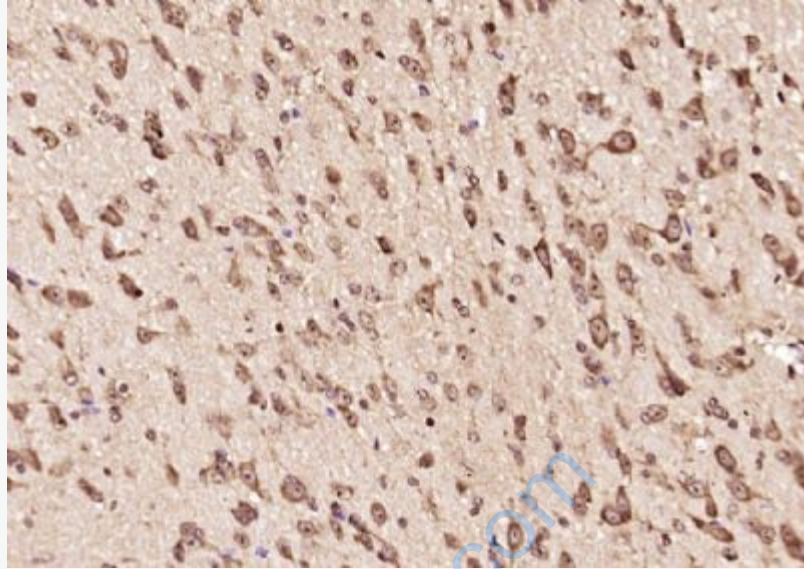
RAW264.7(Mouse) Cell Lysate at 30 ug

Primary: Anti-SGK2 (SL17316R) at 1/300 dilution

Secondary: IRDye800CW Goat Anti-Rabbit IgG at 1/20000 dilution

Predicted band size: 48 kD

Observed band size: 48/50 kD



Paraformaldehyde-fixed, paraffin embedded (mouse brain); Antigen retrieval by boiling in sodium citrate buffer (pH6.0) for 15min; Block endogenous peroxidase by 3% hydrogen peroxide for 20 minutes; Blocking buffer (normal goat serum) at 37°C for 30min; Antibody incubation with (SGK2) Polyclonal Antibody, Unconjugated (SL17316R) at 1:200 overnight at 4°C, followed by operating according to SP Kit(Rabbit) (sp-0023) instructions and DAB staining.