



## Rabbit Anti-Homer (1b+1c) antibody

SL17352R

<b>Product Name:</b>	Homer (1b+1c)
<b>Chinese Name:</b>	神经细胞早期基因抗体
<b>Alias:</b>	Homer 1; HOMER; Homer homolog 1; Homer protein homolog 1; Homer1; HOMER1B; HOMER1C; Neuronal immediate early gene; SYN47; Ves 1. HOME1 HUMAN
<b>Organism Species:</b>	Rabbit
<b>Clonality:</b>	Polyclonal
<b>React Species:</b>	Human,Mouse,Rat,Cow,Horse,Sheep,
<b>Applications:</b>	WB=1:500-2000ELISA=1:500-1000 not yet tested in other applications. optimal dilutions/concentrations should be determined by the end user.
<b>Molecular weight:</b>	45kDa
<b>Cellular localization:</b>	cytoplasmic
<b>Form:</b>	Lyophilized or Liquid
<b>Concentration:</b>	1mg/ml
<b>immunogen:</b>	KLH conjugated synthetic peptide derived from human Homer (1b+1c):1-100/354
<b>Lsotype:</b>	IgG
<b>Purification:</b>	affinity purified by Protein A
<b>Storage Buffer:</b>	0.01M TBS(pH7.4) with 1% BSA, 0.03% Proclin300 and 50% Glycerol.
<b>Storage:</b>	Store at -20 °C for one year. Avoid repeated freeze/thaw cycles. The lyophilized antibody is stable at room temperature for at least one month and for greater than a year when kept at -20°C. When reconstituted in sterile pH 7.4 0.01M PBS or diluent of antibody the antibody is stable for at least two weeks at 2-4 °C.
<b>PubMed:</b>	<a href="#">PubMed</a>
<b>Product Detail:</b>	This gene encodes a member of the homer family of dendritic proteins. Members of this family regulate group 1 metabotropic glutamate receptor function. [provided by RefSeq, Jul 2008]  <b>Function:</b> Homer is a neuronal immediate early gene that is enriched at excitatory synapses and

selectively binds metabotropic glutamate receptors.

**Subunit:**

Interacts with GRM1, GRM5, ITPR1, DNM3, RYR1, RYR2, SHANK1 and SHANK3. Interacts with IFT57 and OPHN1. Isoform 1 encodes a coiled-coil structure that mediates homo- and heteromultimerization.

**Subcellular Location:**

Cytoplasmic; Cell junction, synapse, postsynaptic cell membrane, postsynaptic density. Note=Postsynaptic density of neuronal cells. Isoform 1 inhibits surface expression of GRM5 causing it to be retained in the endoplasmic reticulum.

**Similarity:**

Belongs to the Homer family. Contains 1 WH1 domain.

**SWISS:**

Q86YM7

**Gene ID:**

9456

**Database links:**

[Entrez Gene: 9456](#) Human

[Entrez Gene: 26556](#) Mouse

[Entrez Gene: 29546](#) Rat

[Omim: 604798](#) Human

[SwissProt: Q86YM7](#) Human

[SwissProt: Q9Z2Y3](#) Mouse

[SwissProt: Q9Z214](#) Rat

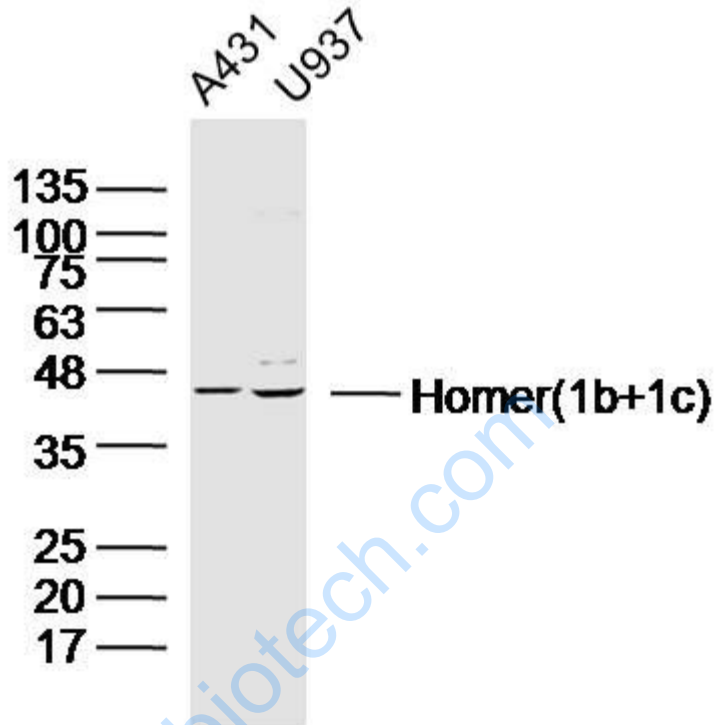
[Unigene: 591761](#) Human

[Unigene: 37500](#) Rat

**Important Note:**

This product as supplied is intended for research use only, not for use in human, therapeutic or diagnostic applications.

Picture:



Sample:

A431 Cell (Human) Lysate at 30 ug

U937 Cell(Human)Lysate at 30 ug

Primary: Anti- Homer(1b+1c) (SL17352R)at 1/300 dilution

Secondary: IRDye800CW Goat Anti-Rabbit IgG at 1/20000 dilution

Predicted band size: 45kD

Observed band size: 45kD