




Rabbit Anti-Dopamine D3 receptor antibody

SL1743R

Product Name:	Dopamine D3 receptor
Chinese Name:	多巴胺受体D3抗体
Alias:	DRD3; 3dopamine receptor; D; Dopamine receptor D3; DRD3; Dopamine receptor 3; ETM1; FET1; D(3) dopamine receptor; DRD3; DRD3 HUMAN.
文献引用  :	Specific References(1) SL1743R has been referenced in 1 publications. [IF=2.35] Xu, Jiao-jiao, et al. "Dopamine D1 receptor activation induces dehydroepiandrosterone sulfotransferase (SULT2A1) in HepG2 cells." Acta Pharmacologica Sinica (2014). WB;Human. PubMed:24909515
Organism Species:	Rabbit
Clonality:	Polyclonal
React Species:	Human,Mouse,Rat,
Applications:	WB=1:500-2000ELISA=1:500-1000IHC-P=1:400-800IHC-F=1:400-800IF=1:200-800 (Paraffin sections need antigen repair) not yet tested in other applications. optimal dilutions/concentrations should be determined by the end user.
Molecular weight:	44kDa
Cellular localization:	cytoplasmicThe cell membrane
Form:	Lyophilized or Liquid
Concentration:	1mg/ml
immunogen:	KLH conjugated synthetic peptide derived from mouse DRD3:352-446/446<Extracellular>
Lsotype:	IgG
Purification:	affinity purified by Protein A
Storage Buffer:	0.01M TBS(pH7.4) with 1% BSA, 0.03% Proclin300 and 50% Glycerol.
Storage:	Store at -20 °C for one year. Avoid repeated freeze/thaw cycles. The lyophilized antibody is stable at room temperature for at least one month and for greater than a year

	when kept at -20°C. When reconstituted in sterile pH 7.4 0.01M PBS or diluent of antibody the antibody is stable for at least two weeks at 2-4 °C.
PubMed:	PubMed
Product Detail:	<p>This is one of the five types (D1 to D5) of receptors for dopamine. The activity of this receptor is mediated by G proteins which inhibit adenylyl cyclase. This receptor is expressed in phylogenetically older regions of the brain, suggesting that it plays a role in cognitive and emotional functions. It is a target for drugs which treat schizophrenia, drug addiction, and Parkinson disease. Alternative splicing of this gene results in multiple transcript variants that would encode different isoforms, although some variants may be subject to nonsense-mediated decay (NMD). Also known as: dopamine D3 receptor; 3 dopamine receptor; D; Dopamine receptor D3; DRD; ETM1; FET1.</p> <p>Subunit: Interacts with CLIC6. Interacts with GRK4. Interacts with PALM.</p> <p>Subcellular Location: Cell membrane; Multi-pass membrane protein. Note=Both membrane-bound and scattered in the cytoplasm during basal conditions. Receptor stimulation results in the rapid internalization and sequestration of the receptors at the perinuclear area (5 and 15 minutes), followed by the dispersal of the receptors to the membrane (30 minutes). DRD3 and GRK4 co-localize in lipid rafts of renal proximal tubule cells.</p> <p>Tissue Specificity: Brain.</p> <p>Similarity: Belongs to the G-protein coupled receptor 1 family.</p> <p>SWISS: P30728</p> <p>Gene ID: 13490</p> <p>Database links:</p> <p>Entrez Gene: 1814Human Entrez Gene: 13490Mouse Entrez Gene: 29238Rat Omim: 126451Human SwissProt: P35462Human SwissProt: P30728Mouse SwissProt: P19020Rat</p>

[Unigene: 121478](#)Human

[Unigene: 439735](#)Mouse

[Unigene: 10356](#)Rat

Important Note:

This product as supplied is intended for research use only, not for use in human, therapeutic or diagnostic applications.

多巴胺受体D3常与某些精神、神经疾病有关, 如精神分裂症、早发性痴呆等。但最新研究表明多巴胺受体与Tumour细胞多药耐药有关。

Picture:



Sample:

Brain (Mouse) Lysate at 40 ug

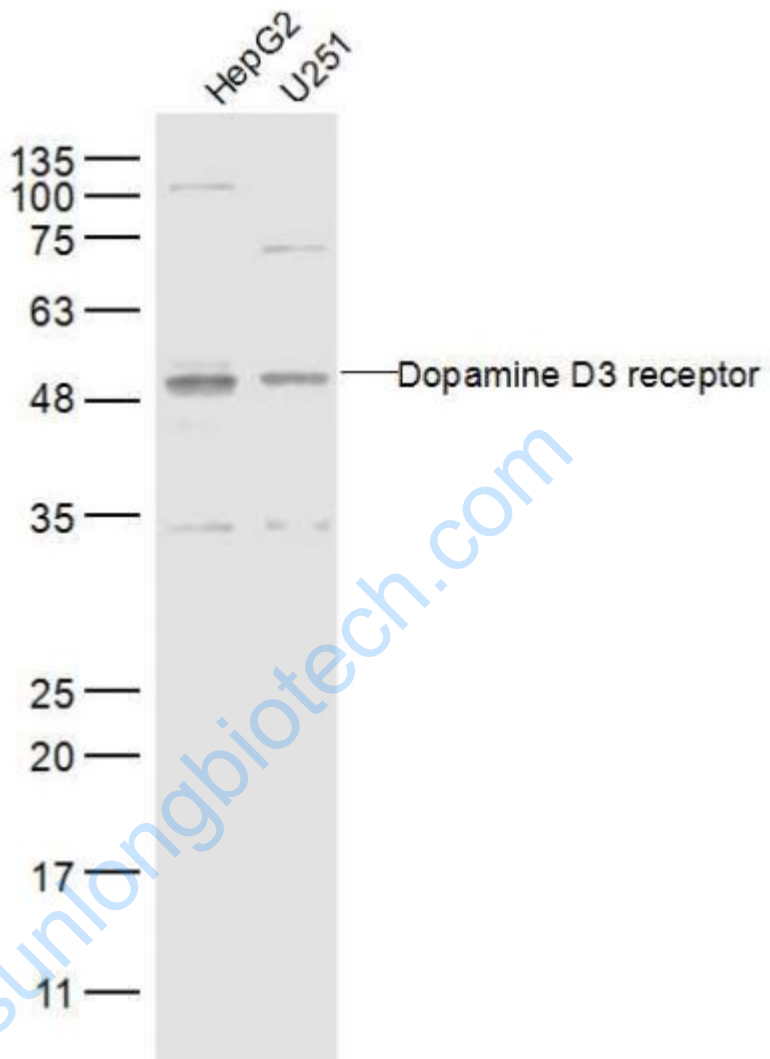
Brain (Rat) Lysate at 40 ug

Primary: Anti-Dopamine D3 receptor (SL1743R) at 1/300 dilution

Secondary: IRDye800CW Goat Anti-Rabbit IgG at 1/20000 dilution

Predicted band size: 44 kD

Observed band size: 48 kD



Sample:

HepG2 Cell Lysate at 30 ug

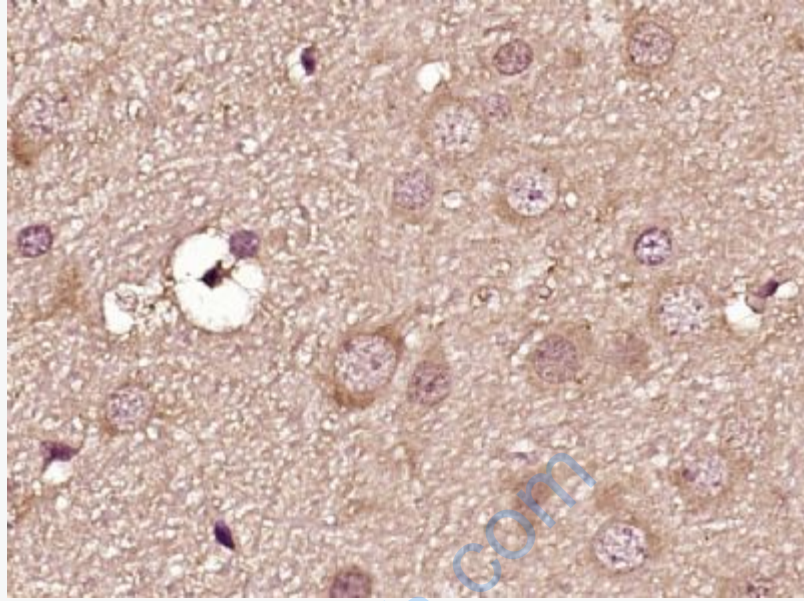
U251 Cell Lysate at 30 ug

Primary: Anti-Dopamine D3 receptor (SL1743R) at 1/300 dilution

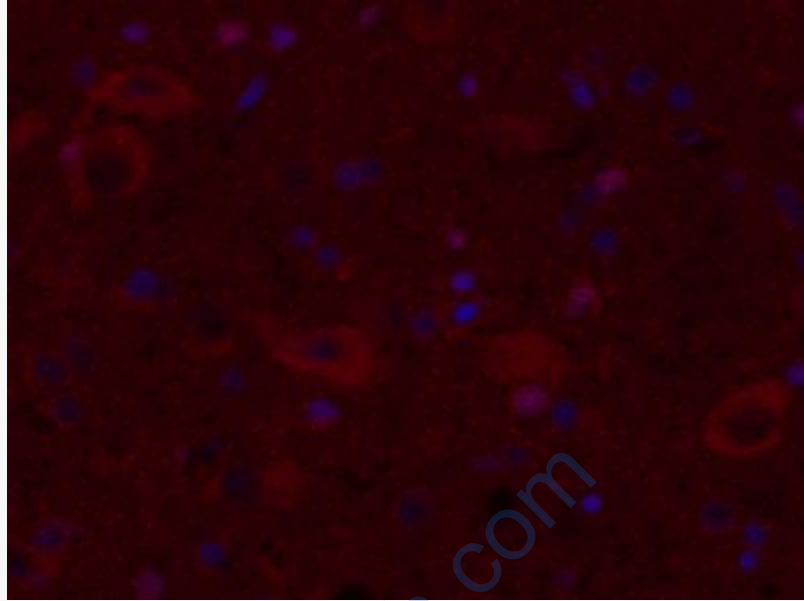
Secondary: IRDye800CW Goat Anti-Rabbit IgG at 1/20000 dilution

Predicted band size: 44 kD

Observed band size: 48 kD



Paraformaldehyde-fixed, paraffin embedded (Rat brain); Antigen retrieval by boiling in sodium citrate buffer (pH6.0) for 15min; Block endogenous peroxidase by 3% hydrogen peroxide for 20 minutes; Blocking buffer (normal goat serum) at 37°C for 30min; Antibody incubation with (Dopamine D3 receptor) Polyclonal Antibody, Unconjugated (SL1743R) at 1:400 overnight at 4°C, followed by operating according to SP Kit(Rabbit) (sp-0023) instructions and DAB staining.



Paraformaldehyde-fixed, paraffin embedded (Rat brain); Antigen retrieval by boiling in sodium citrate buffer (pH6.0) for 15min; Block endogenous peroxidase by 3% hydrogen peroxide for 20 minutes; Blocking buffer (normal goat serum) at 37°C for 30min; Antibody incubation with (Dopamine D3 receptor) Polyclonal Antibody, Unconjugated (SL1743R) at 1:400 overnight at 4°C, followed by a conjugated Goat Anti-Rabbit IgG antibody (SL1743R) for 90 minutes, and DAPI for nuclei staining.