



Rabbit Anti-SHMT1 antibody

SL17468R

Product Name:	SHMT1
Chinese Name:	丝氨酸甲基化酶cSHMT抗体
Alias:	CSHMT; Cytoplasmic serine hydroxymethyltransferase; cytosolic; GLYC_HUMAN; Glycine hydroxymethyltransferase; Serine hydroxymethyltransferase 1 (soluble); Serine hydroxymethyltransferase; Serine hydroxymethyltransferase, cytosolic; Serine methylase; SHMT; Shmt1.
Organism Species:	Rabbit
Clonality:	Polyclonal
React Species:	Human,Mouse,Rat,Rabbit,
Applications:	WB=1:500-2000ELISA=1:500-1000IHC-P=1:400-800IHC-F=1:400-800ICC=1:100-500IF=1:100-500 (Paraffin sections need antigen repair) not yet tested in other applications. optimal dilutions/concentrations should be determined by the end user.
Molecular weight:	53kDa
Cellular localization:	cytoplasmic
Form:	Lyophilized or Liquid
Concentration:	1mg/ml
immunogen:	KLH conjugated synthetic peptide derived from human SHMT1:301-400/483
Lsotype:	IgG
Purification:	affinity purified by Protein A
Storage Buffer:	0.01M TBS(pH7.4) with 1% BSA, 0.03% Proclin300 and 50% Glycerol.
Storage:	Store at -20 °C for one year. Avoid repeated freeze/thaw cycles. The lyophilized antibody is stable at room temperature for at least one month and for greater than a year when kept at -20°C. When reconstituted in sterile pH 7.4 0.01M PBS or diluent of antibody the antibody is stable for at least two weeks at 2-4 °C.
PubMed:	PubMed
Product Detail:	This gene encodes the cytosolic form of serine hydroxymethyltransferase, a pyridoxal phosphate-containing enzyme that catalyzes the reversible conversion of serine and tetrahydrofolate to glycine and 5,10-methylene tetrahydrofolate. This reaction provides one-carbon units for synthesis of methionine, thymidylate, and purines in the

cytoplasm. This gene is located within the Smith-Magenis syndrome region on chromosome 17. A pseudogene of this gene is located on the short arm of chromosome 1. Alternative splicing results in multiple transcript variants. [provided by RefSeq, Aug 2013]

Function:

Interconversion of serine and glycine.

Subcellular Location:

Cytoplasm.

Similarity:

Belongs to the SHMT family.

SWISS:

P34896

Gene ID:

6470

Database links:

[Entrez Gene: 6470](#) Human

[Entrez Gene: 20425](#) Mouse

[Omim: 182144](#) Human

[SwissProt: P34896](#) Human

[SwissProt: P50431](#) Mouse

[Unigene: 513987](#) Human

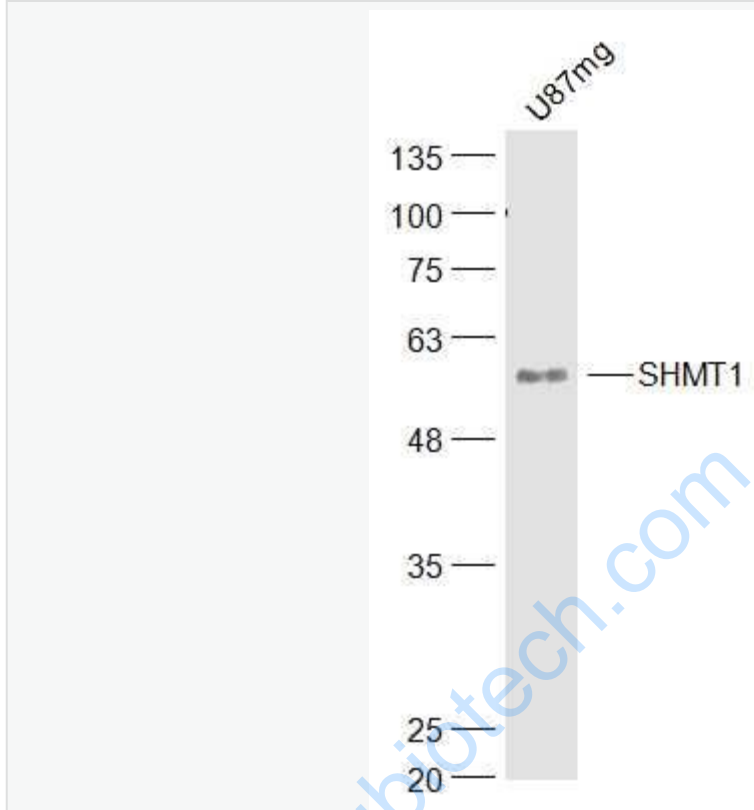
[Unigene: 636044](#) Human

[Unigene: 364956](#) Mouse

Important Note:

This product as supplied is intended for research use only, not for use in human, therapeutic or diagnostic applications.

Picture:



Sample:

U87MG(Human)Cell Lysate at 40 ug

Primary: Anti-SHMT1 (SL17468R) at 1/300 dilution

Secondary: IRDye800CW Goat Anti-Rabbit IgG at 1/20000 dilution

Predicted band size: 53 kD

Observed band size: 53 kD